

Worcestershire

Personal Details:

Name: Ms Barbara Meddings

Email: [REDACTED]

Postcode: [REDACTED]

Organisation Name: HINDLIP, MARTIN HUSSINGTREE & SALWARPE PARISH COUNCIL (Representative of parish/town council)

Comment text:

Related subject: Bowbrook County Division

Please see file attached

Attached Documents:

- Bowbrook Division Review Submission.pdf

WORCESTERSHIRE ELECTORAL REVIEW BOWBROOK DIVISION

The Parish Council advocates that in understanding that population growth represents change and a need to review Bowbrook Division, there is also the need to recognise the significance of the three grouped rural parish wards of Salwarpe, Martin Hussingtree and Hindlip. With their inter-related functions and associations, they have from the May 2023 local elections, formed a new District Ward of North Claines and Salwarpe.

1.BOWBROOK DIVISION

The importance of Bowbrook Division is its central West to East position, between to the north the two urban town divisions of Droitwich West and Droitwich East and the Worcester urban divisions to the South.

Bowbrook's strategic position not only plays an important role of maintaining the distinction between towns and the countryside but within its robust Northern A38 boundary, is located the West Midlands Green Belt.

The work of County Councillor Marc Bayliss is acknowledged, interacting and working with the Parish Council to achieve solutions for residents and businesses on rural highway priorities and infrastructure in the Bowbrook division.

2. GEOGRAPHICAL IDENTITIES

2.1: West Midlands Green Belt:

The role of the Green Belt is protection of the countryside, preventing urban sprawl and the merger of conurbations, specifically Droitwich Spa and Worcester.

A large section of the Bowbrook Division is covered by the Green Belt at:

- (i) North boundary- the A38 Roman Way By-pass via Pulley Lane/Newland Lane to M5 Motorway boundary.
- (ii) West boundary - along the Birmingham to Worcester Railway Line.
- (iii) East boundary- M5 Motorway from Newland Lane down to Junction 6.
- (iv) South boundary -from Junction 6, M5 Motorway, along a wide swathe of land on the south side of A449 dual carriageway running Westwards. **(See Appendix 1)**

2.2: Salwarpe, Martin Hussingtree and Hindlip Parish Ward Boundaries:

The three rural parish wards are geographically aligned and interconnected either side of the A38 Droitwich to Worcester transport corridor and bus service links.

Within the three parishes set in open countryside is the village of Salwarpe and the varied settlement/hamlets of Martin Hussingtree and Hindlip, with their respective conservation areas,

farm holdings, ancient Oakley Woods and SSSI Oakley Pool. Also included are the Hindlip estate headquarters of West Mercia Police and Fire and Rescue services, Worcestershire Wildlife Centre and the Sixways stadium, sports and leisure complex.

Numerous rural lanes and public rights of way interconnect the three rural parishes, each parish having a central thoroughfare leading to either the A38 or A4538 Trunk roads.

Their overall boundaries are:

North boundary is formed by the robust physical A38 By-pass (Roman Way) and the C2086 Pulley and Newland lanes to the M5 motorway boundary, this boundary defines the separation from the town of Droitwich Spa and its two urban county divisions of Droitwich West and Droitwich East.

South boundary is defined by the A449 dual carriageway link to the M5 motorway.

West boundary encompasses the historic 'High Park' and parkland with a tributary merging into the River Salwarpe running southwards.

East boundary being the M5 Motorway adjacent Junction 6.

Key corridors that run through the parishes include main trunk roads, interconnected rural lanes, the River Salwarpe, railway lines, the canal and M5 motorway. **(see Map Appendix 2)**

Services and facilities located on out-of-town fringes, offer wide ranges of food stores, business parks, leisure and sports facilities along with farm diversification schemes in countryside locations.

The three parishes all share similar rural agricultural and farm economic profiles in terms of employment and business patterns with a myriad of small active enterprises in local properties adding to an overall vibrant local economy.

Our grouped parishes also have conterminous boundaries with North Claines its village of Fernhill Heath and its grouped parishes. Oddingley Parish to the East of the M5 also has connections of rural lanes and rights of ways which were physically joined before division by construction of the M5 motorway. Many active inter-relationships of agricultural and social interests remain intact.

3.ELECTORAL VARIANCE

In noting that Bowbrook Division 2029 prediction of electoral numbers is greater than 10% average criteria, this is not perceived as justification for splitting the rural grouped parish wards to attain average electoral representation.

The Parish Council feel strongly that any severing of its grouped rural parish wards in order to justify electoral representation in the Bowbrook Division, is seen to be at the expense of the interests and democratic governance of the rural electorate.

The Commission is urged to consider reasonable disparity in the average electoral numbers, rather than a blanket 10% average for the Bowbrook division.

4.DROITWICH TOWN

Droitwich Spa to the North has one Town Council represented by its own Two County Divisions of Droitwich West and Droitwich East.

The robustness of the Bowbrook division's Northern boundary strongly defines the separate identities of the rural parishes from the urban Town limits.

To sever the inextricably grouped rural parishes of Salwarpe, Martin Hussingtree and Hindlip is more than mathematical mapping, it is seen as alienating the interests of those interlinked rural communities.

CONCLUSION

The Parish Council of Hindlip, Martin Hussingtree and Salwarpe requests that the Boundary Commission in its consideration of electoral variances, will take into account the unique community cohesion of our three rural parish wards along with North Claines and its established links ensuring continuation of the extensive shared social, economic and geographical similarities.

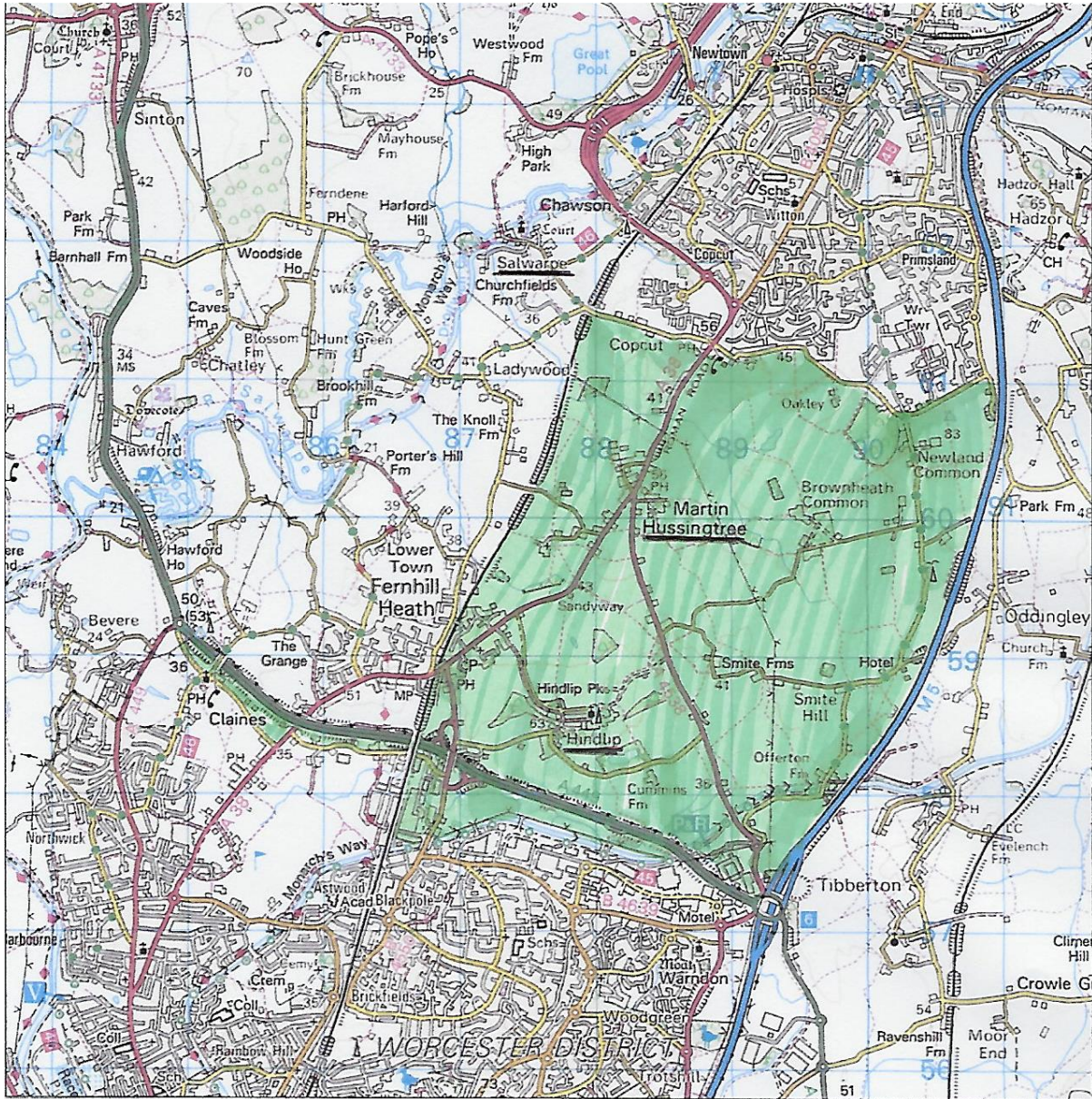
In representing the views of the local people, this Parish Council strongly urge the Electoral commission to recognise the commonalities and shared interests of the rural grouped parishes within Bowbrook division, in which it would like to remain, to maintain their important association and effective co-operation with their villages and boundaries.

Elizabeth Gallagher
Clerk to the Council
Hindlip, Martin Hussingtree & Salwarpe Parish Council

1. WEST MIDLANDS GREEN BELT

Located south of A38 By-pass

APPENDIX 1



Salwarpe, Martin Hussingtree, Hindlip Parishes

APPENDIX 2

