






THE LOCAL GOVERNMENT BOUNDARY COMMISSION FOR ENGLAND

ELECTORAL REVIEW OF SWINDON

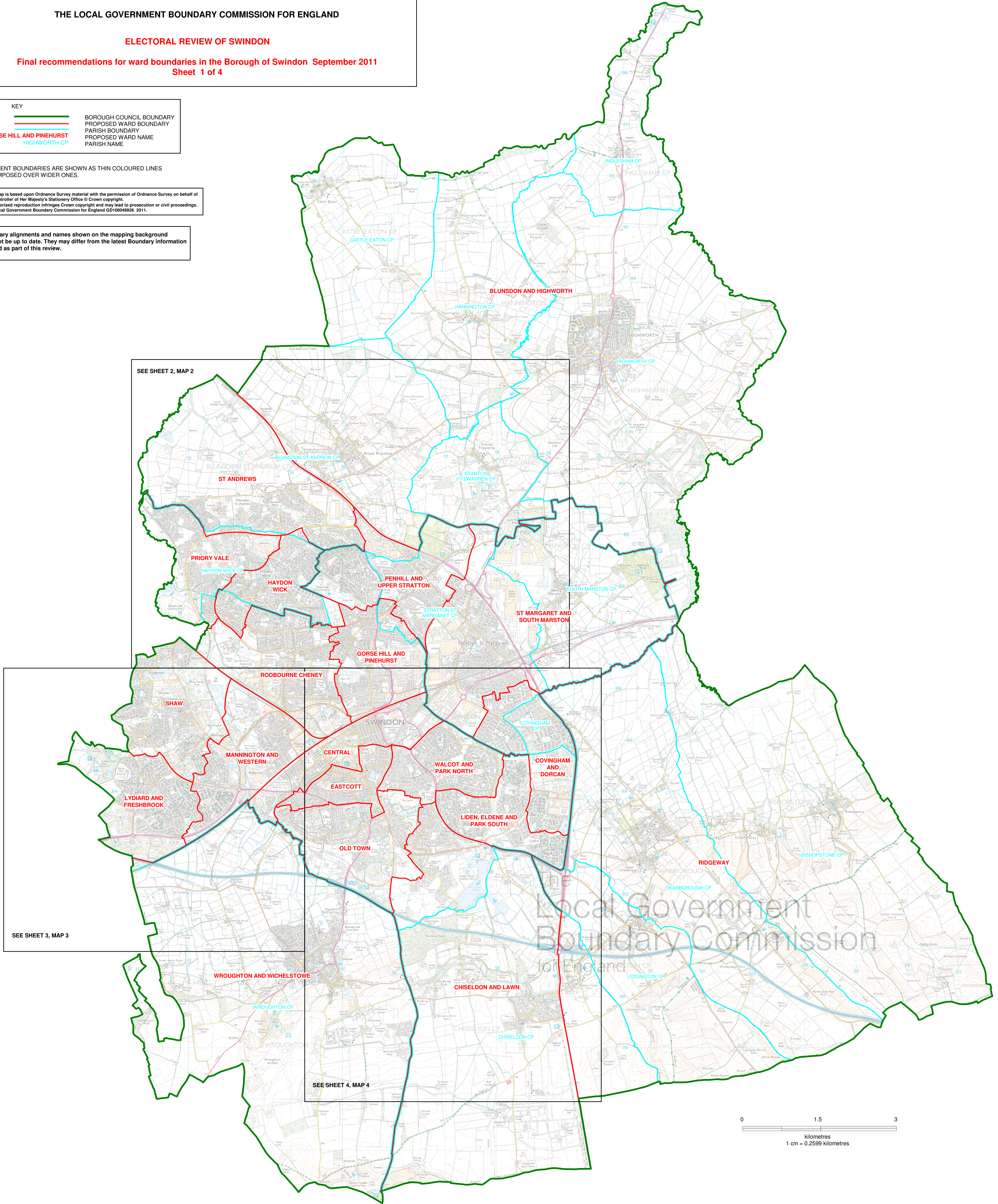
Final recommendations for ward boundaries in the Borough of Swindon September 2011
Sheet 1 of 4

KEY	
	BOROUGH COUNCIL BOUNDARY
	PROPOSED WARD BOUNDARY
	PARISH BOUNDARY
	GORSE HILL AND PINEHURST
	HIGHWORTH CP
	PROPOSED WARD NAME
	PARISH NAME

COINCIDENT BOUNDARIES ARE SHOWN AS THIN COLOURED LINES SUPERIMPOSED OVER WIDER ONES.

This map is based upon Ordnance Survey material with the permission of Ordnance Survey on behalf of the Controller of Her Majesty's Stationery Office © Crown copyright. Unauthorised reproduction infringes Crown copyright and may lead to prosecution or civil proceedings. The Local Government Boundary Commission for England GD1004929 2011.

Boundary alignments and names shown on the mapping background may not be up to date. They may differ from the latest Boundary information applied as part of this review.



SEE SHEET 2, MAP 2

SEE SHEET 3, MAP 3

SEE SHEET 4, MAP 4

