

Map referred to in the Nottinghamshire (Electoral Changes) Order 2016
Sheet 1 of 1

This map is based upon Ordnance Survey material with the permission of Ordnance Survey on behalf of the Controller of Her Majesty's Stationery Office © Crown copyright. Unauthorised reproduction infringes Crown copyright and may lead to prosecution or civil proceedings. The Local Government Boundary Commission for England GD1004926 2016.

Boundary alignments and names shown on the mapping background may not be up to date. They may differ from the latest Boundary information applied as part of this review.

KEY TO ELECTORAL DIVISIONS

A ASHFIELD DISTRICT

- 1 ASHFIELDS
- 2 HUCKNALL NORTH
- 3 HUCKNALL SOUTH
- 4 HUCKNALL WEST
- 5 KIRKBY NORTH
- 6 KIRKBY SOUTH
- 7 SELSTON
- 8 SUTTON CENTRAL & EAST
- 9 SUTTON NORTH
- 10 SUTTON WEST

B BASSETLAW DISTRICT

- 11 BLYTH & HARWORTH
- 12 MISTERTON
- 13 RETFORD EAST
- 14 RETFORD WEST
- 15 TUXFORD
- 16 WORKSOP EAST
- 17 WORKSOP NORTH
- 18 WORKSOP SOUTH
- 19 WORKSOP WEST

C BROXTOWE BOROUGH

- 20 BEESTON CENTRAL & RYLANDS
- 21 BRAMCOTE & BEESTON NORTH
- 22 EASTWOOD
- 23 GREASLEY & BRINSLEY
- 24 NUTHALL & KIMBERLEY
- 25 STAPLEFORD & BROXTOWE CENTRAL
- 26 TON, CHILWELL & ATTENBOROUGH

D GEDLING BOROUGH

- 27 ARNOLD NORTH
- 28 ARNOLD SOUTH
- 29 CALVERTON
- 30 CARLTON EAST
- 31 CARLTON WEST
- 32 NEWSTEAD

E MANSFIELD DISTRICT

- 33 MANSFIELD EAST
- 34 MANSFIELD NORTH
- 35 MANSFIELD SOUTH
- 36 MANSFIELD WEST
- 37 WARSOP

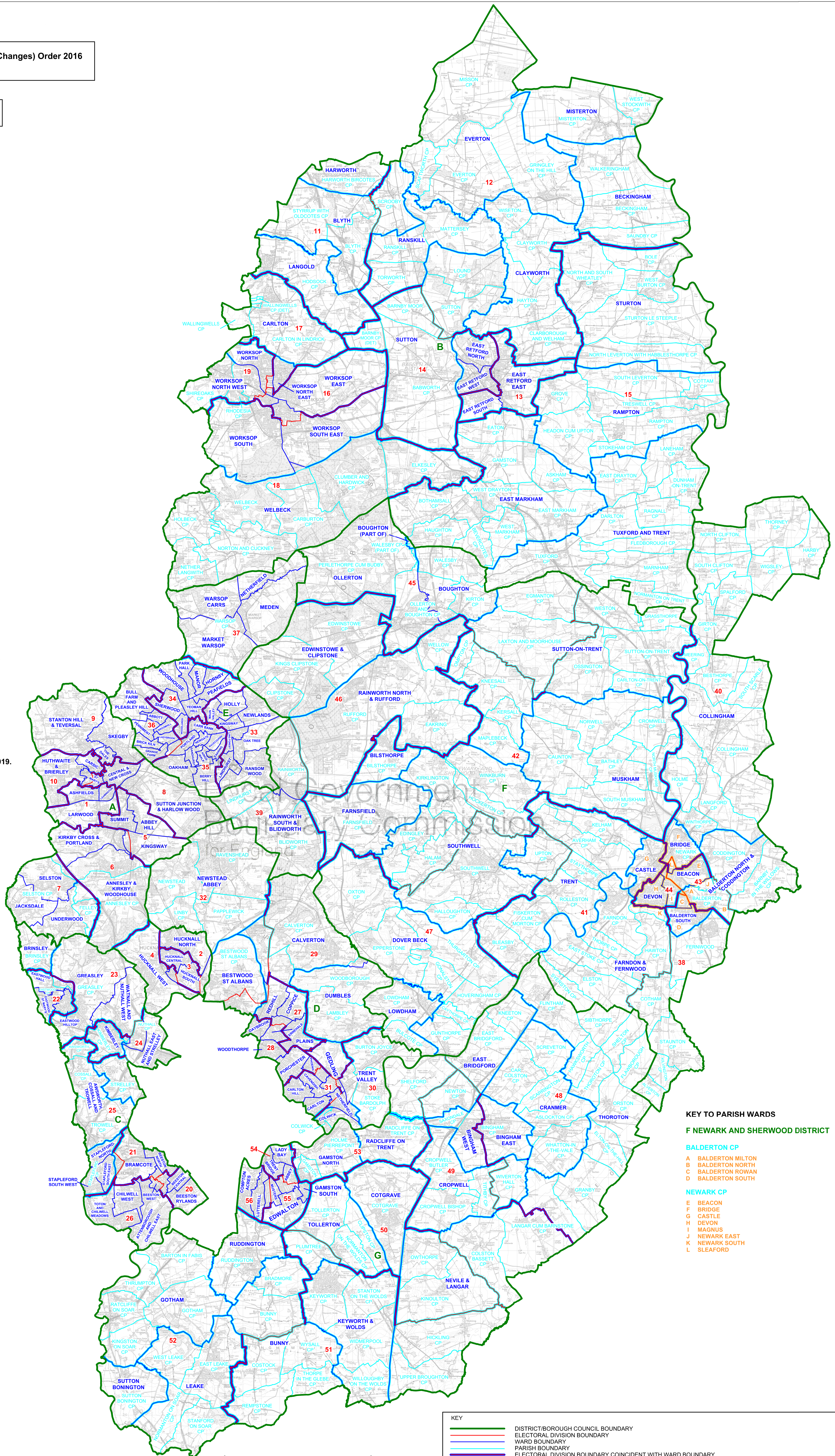
F NEWARK AND SHERWOOD DISTRICT

DISTRICT COUNCIL WARD BOUNDARIES ARE AS DEFINED IN THE NEWARK AND SHERWOOD (ELECTORAL CHANGE ORDER) 2016 OPERATIVE 2019.

- 38 BALDERTON
- 39 BLIDWORTH
- 40 COLLINGHAM
- 41 FARNON & TRENT
- 42 MUSKHAM & FARNSFIELD
- 43 NEWARK EAST
- 44 NEWARK WEST
- 45 OLLERTON
- 46 SHERWOOD FOREST
- 47 SOUTHWELL

G RUSHCLIFFE BOROUGH

- 48 BINGHAM EAST
- 49 BINGHAM WEST
- 50 COTGRAVE
- 51 KEYWORTH
- 52 LEAKE & RUDDINGTON
- 53 RADCLIFFE ON TRENT
- 54 WEST BRIDGFORD NORTH
- 55 WEST BRIDGFORD SOUTH
- 56 WEST BRIDGFORD WEST



KEY TO PARISH WARDS

F NEWARK AND SHERWOOD DISTRICT

- BALDERTON CP
- A BALDERTON MILTON
- B BALDERTON NORTH
- C BALDERTON ROWAN
- D BALDERTON SOUTH

NEWARK CP

- E BEACON
- F BRIDGE
- G CASTLE
- H DEVON
- I MAGNUS
- J NEWARK EAST
- K NEWARK SOUTH
- L SLEAFORD

KEY	
	DISTRICT/BOROUGH COUNCIL BOUNDARY
	ELECTORAL DIVISION BOUNDARY
	WARD BOUNDARY
	PARISH BOUNDARY
	ELECTORAL DIVISION BOUNDARY COINCIDENT WITH WARD BOUNDARY
	ELECTORAL DIVISION BOUNDARY COINCIDENT WITH PARISH BOUNDARY
	WARD BOUNDARY COINCIDENT WITH PARISH BOUNDARY
	PARISH WARD BOUNDARY COINCIDENT WITH WARD BOUNDARY
	ELECTORAL DIVISION BOUNDARY COINCIDENT WITH WARD BOUNDARY AND PARISH BOUNDARY
	ELECTORAL DIVISION BOUNDARY COINCIDENT WITH WARD BOUNDARY AND PARISH WARD BOUNDARY
	LOWDHAM
	LOWDHAM CP