

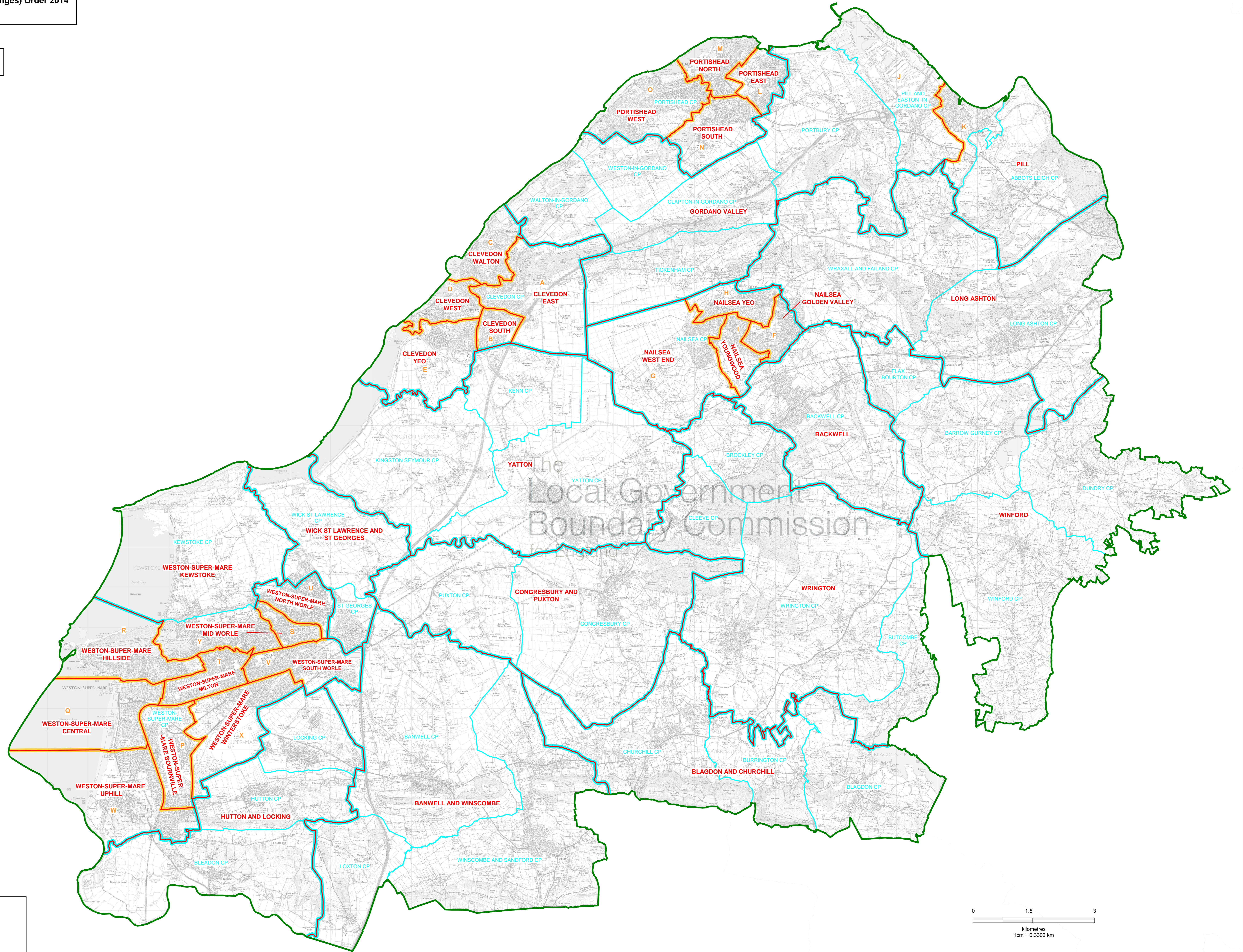
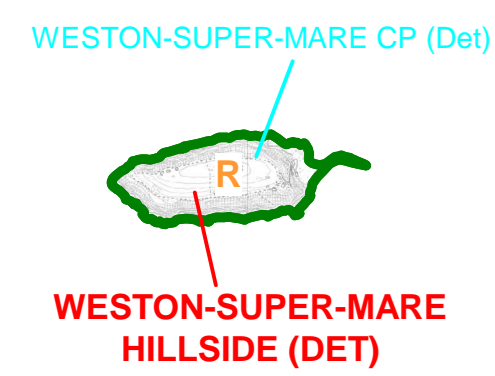
Map referred to in the North Somerset (Electoral Changes) Order 2014  
Sheet 1 of 1

This map is based upon Ordnance Survey material with the permission of Ordnance Survey on behalf of the Controller of Her Majesty's Stationery Office © Crown copyright. Unauthorised reproduction infringes Crown copyright and may lead to prosecution or civil proceedings. The Local Government Boundary Commission for England GD100049928 2014.

Boundary alignments and names shown on the mapping background may not be up to date. They may differ from the latest Boundary information applied as part of this review.

KEY TO PARISH WARDS

- CLEVEDON CP**
  - A EAST
  - B SOUTH
  - C WALTON
  - D WEST
  - E YEO
- NAILSEA CP**
  - F GOLDEN VALLEY
  - G WEST END
  - H YEO
  - I YOUNGWOOD
- PILL AND EASTON-IN-GORDANO CP**
  - J EASTON-IN-GORDANO
  - K PILL
- PORTISHEAD CP**
  - L EAST
  - M NORTH
  - N SOUTH
  - O WEST
- WESTON-SUPER-MARE CP**
  - P BOURNVILLE
  - Q CENTRAL
  - R HILLSIDE
  - S MID WORLE
  - T MILTON
  - U NORTH WORLE
  - V SOUTH WORLE
  - W UPHILL
  - X WINTERSTOKE
  - Y WORLEBURY



KEY	
	DISTRICT COUNCIL BOUNDARY
	WARD BOUNDARY
	PARISH BOUNDARY
	WARD BOUNDARY COINCIDENT WITH PARISH BOUNDARY
	WARD BOUNDARY COINCIDENT WITH PARISH WARD BOUNDARY
	YATTON WARD NAME
	HUTTON CP PARISH NAME

