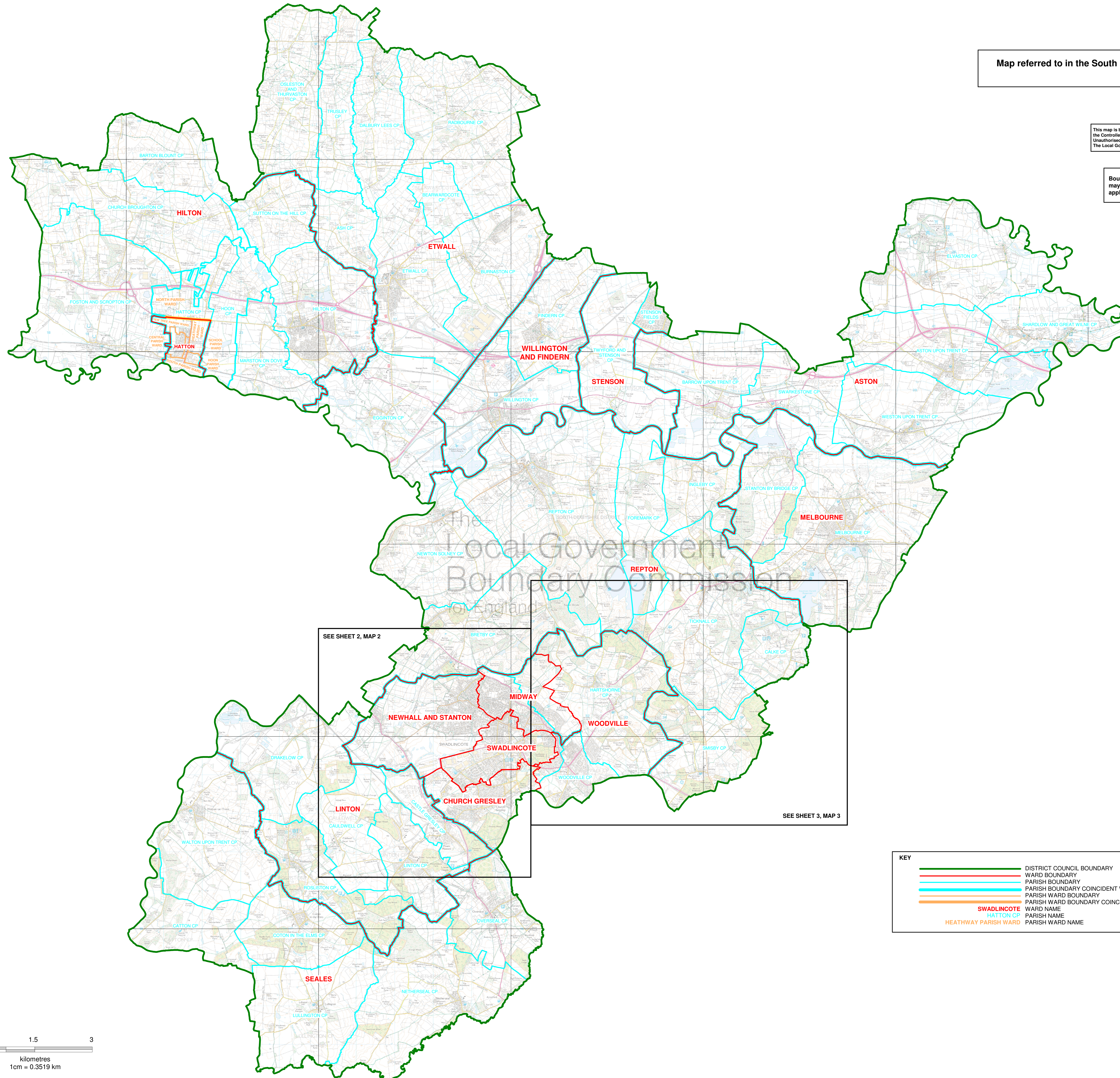


Map referred to in the South Derbyshire (Electoral Changes) Order 2011
Sheet 1 of 3

This map is based upon Ordnance Survey material with the permission of Ordnance Survey on behalf of the Controller of Her Majesty's Stationery Office © Crown copyright. Unauthorised reproduction infringes Crown copyright and may lead to prosecution or civil proceedings. The Local Government Boundary Commission for England GD10004926 2011.

Boundary alignments and names shown on the mapping background may not be up to date. They may differ from the latest Boundary information applied as part of this review.



SEE SHEET 2, MAP 2

SEE SHEET 3, MAP 3

KEY	
	DISTRICT COUNCIL BOUNDARY
	WARD BOUNDARY
	PARISH BOUNDARY
	PARISH BOUNDARY COINCIDENT WITH WARD BOUNDARY
	PARISH WARD BOUNDARY
	PARISH WARD BOUNDARY COINCIDENT WITH WARD BOUNDARY
	SWADLINCOTE WARD NAME
	HATTON CP PARISH NAME
	HEATHWAY PARISH WARD PARISH WARD NAME

