

LOCAL GOVERNMENT BOUNDARY COMMISSION
2023 REVIEW OF SHROPSHIRE DIVISIONS
INITIAL CONSULTATION ON BOUNDARIES
Submission by David Murray

Contents

Page	Description
1	South Shropshire from the SW
5	Shrewsbury Area from the West
6	North Shropshire from E to W
9	Polling District Map: Rural Areas
10	Reference data: South Shropshire
15	Reference data: Shrewsbury area
18	Appendix 1: Ludlow South & East
19	Appendix 2: Bridgnorth divisions
20	Appendix 3: Bridgnorth Rural map
21	Appendix 4: Claverley & Worfield map
22	Appendix 5: Shifnal transfers north 1
24	Appendix 6: Shifnal transfers north 2
26	Appendix 7: Shrewsbury N of Severn
27	Appendix 8: Shrewsbury S of Severn
30	Appendix 9: Market Drayton revisions
32	Appendix 10: Whitchurch revisions
34	Appendix 11: Oswestry revisions

LGBCE Initial Consultation on Revisions to Shropshire Divisions

22 November 2022 to 30 January 2023 from David Murray

The average electorate for 74 Councillors on the Shropshire Unitary Council is currently 3,369 and is estimated to rise to 3,595 within the next five years. It is 15 years since the last Review, and the inequality in the divisions has changed. It is expected that the electorates of all divisions keep to +/- 10% of the average.

Introduction

The changes to the existing divisions are discussed sequentially, options considered, and any links to the existing divisions explored. Some divisions that were within the tolerances required have had to accept change because neighbouring divisions were too high or too low. In some cases they have had to lose parishes on one side, but gain them on the other!

SOUTH SHROPSHIRE

1. Clun (LKA to LKK + LBF)

This division is in the far SW of the county and is - 7% now, but expected to be - 11% by 2028. Only a small adjustment is necessary to bring the 2028 figure below 10% and this can be offered by a polling district from the adjacent Bishop's Castle division to the north, which is currently - 13% and set to increase to - 16% by 2028. The Edgton Parish Meeting (LBC) and Mainstone Parish Council (LBF) both meet the requirement with electorates in the 80s, but Edgton would create a peninsula sandwiched between Bishop's Castle & Craven Arms. Mainstone fits better geographically, has a direct link to Clun alongside the River Unk, but with no direct route to Bishop's Castle, is somewhat isolated in its present division. This move gives Clun an electorate of - 4% now, but - 8.3% in 2028, bringing it within range acceptably.

2. Bishop's Castle (LBA to LBE, LBG to LBK + SGD)

This division needs more attention, and has already lost 83/84 Mainstone electors to Clun. Church Stretton and Craven Arms are finely balanced, and suggestions in the last Review that Hopesay Parish Council (LHG) with over 400 electors should join Clun were rejected. There is no possibility of help from Chirbury & Worthen, already around - 30% with the lowest electorate in the county! So the possibility is to consider polling districts from Burnell division. With + 8% it has some room for manoeuvre, although Severn Valley to its east will be +27%. Around 300 electors are needed for Bishop's Castle, and Church Pulverbatch Parish Council (SGD) meets that requirement to the north of Ratlinghope giving new totals of - 6.1 & - 9.5%.

3. Chirbury & Worthen (LGA to LGG + SLF)

This was the lowest in the county, and at the time it was felt that it had to be accepted, being right on the boundary with Wales. Rea Valley division is a very compact area needing no change with two main parishes of Minsterley and Pontesbury which should be kept together. However, to the north of Worthen is Westbury ward from Loton (SLF) with over 700 electors. Adding this to Chirbury & Worthen brings it in range and provides the B4386 road link right down the valley from Westbury to Worthen to Marton to Chirbury, leaving the new division with - 8.25% now and - 9.3% in 5 years time, with both figures within range for the first time.

4. Church Stretton (LHA to LHC, part LHD)

As a 2-member division they were at +8.4% and +7.1%. Although there is no commonality with Craven Arms (as admitted in the previous Review after a visit) it was felt that separating them would create an electoral imbalance, weighted towards Church Stretton. This time, the Little Stretton polling district has been split in two to give equal 2028 electorates of +7.1%.

5. Craven Arms (part LHD, LHE to LHJ)

As stated above, there is no commonality with Church Stretton, and despite the objections to combining them, it was the numbers that overrode them. This time, the split of LHD with the southern half going to Craven Arms provides equality. Adding the whole of LHD to either Craven Arms or Church Stretton would have taken either over +10%, so splitting it justified.

6. Burnell (SGA, SGB, SGE to SGO + SSD, SSE, SSH & SSI)

Burnell is currently +8% in both areas, so would not need attention except that Severn Valley to the east will be up to +27% by 2028. It has been adjusted to reduce the excess. A starting point was the transfer of Pulverbatch Parish Council (SGD) to Bishop's Castle to bring that in range, and the transfer of Cardington Parish Council (SGC) to Corvedale from -14% up to -3.6%. This loses ~700 electors from Burnell, taking it down to -11%. So it can take on 4 parishes from Severn Valley: Church Preen (SSD), Cound (SSE), Hughley (SSH) and Kenley (SSI), adding 640 to its 2028 total. This gives Burnell a very similar +6.4% now and +7.0% in 2028. The BCE has put Burnell and Severn Valley divisions into South Shropshire.

7. Severn Valley (SSA to SSC, SSF, SFJ to SSL)

Currently +12% but estimated +27% by 2028 so needs shrinking a bit. The 4 parishes close to Burnell (see above) totalling 640 electors balance out the two divisions. In order to keep the 2028 figure below 10% due to the planned expansion in Buildwas/Ironbridge, the current figure is -6%. Both Burnell and Severn Valley divisions will transfer from the Shrewsbury constituency to the newly-named South Shropshire constituency, keeping them all together.

8. Corvedale (LLA to LLL + SGC)

Corvedale was estimated to be -14% by 2028 so needs a small increase. The most logical addition is at the northern end, by adding Cardington (SGC) from Burnell to bring Corvedale in range with +1% now and -3.6% in 2028. Cardington has better links to Rushbury to the south than it does to the north and avoids any disruption to its other neighbouring divisions.

9. Ludlow North (LOA to LOD)

Ludlow North is at -8% both now and in 2028. It cannot help out or accept help from adjacent Ludlow East, but as it is within the +/-10% limit, it can remain the same for this Review.

10. Ludlow East (LNA to LNC)

Currently -10% and predicted to be -18% in 2028, it would look for help from any adjacent divisions. As stated above, Ludlow North has no electors to share. The only possibility is with Ludlow South which is showing an expansion of ~650 electors and a surplus of 7.6%.

11. Ludlow South (LPA to LPE)

One small transfer from the north of the division to Ludlow East would be the transfer of Dahn Drive (211) and Riddings Park (4) to Ludlow East. See the Appendix for further details.

12. Cleve (LIA, LID to LIH, LIJ)

Cleve had a surplus, but splitting the 2-member Cleobury Mortimer division into single ones, meant both were short of electors, so Cleve has contributed 3 parishes to balance it out: Cleeton St Mary ward (LIB) to Stottesdon division; Boraston Parish (LIC) & Nash PC (LII) to the Cleobury Mortimer division. This reduces Cleve below the average, but still within range.

13. Cleobury Mortimer (LJA, LJB, LJF, LJH + LIC & LII)

Because Cleobury Mortimer itself has by far the largest electorate, it needs less parishes to bring it within range with +3% now and -1.7% by 2028. This is quite a rise from -14% for 2.

14. Stottesdon (LJC to LJE, LJG, LJI, LJK + LFB, LFM & LIB)

Stottesdon is geographically large and fairly central to take the name of the division, though Hopton Wafers (LJD) and Kinlet (LJE) both have slightly larger electorates. It is a bit of a mix with 3 small parishes from elsewhere, but they take the new division to - 8.6% in range.

15. Highley (LMA, LMB + LFD)

Highley was around -15%, but bringing in Billingsley PC (LFD) brings it up to -9.4% by 2028. Others have suggested adding Chelmarsh to the north, but that has more than is necessary.

16. Brown Clee (LFA, LFC, LFE to LFL, LFN to LFQ + LQD, LQG & LQH)

This is a large rural division that started off with -5% on both counts. However, it needed to part with 3 parishes in order to support neighbouring divisions: Aston Botterell (LFB) and Middleton Scriven (LFM) to bring the new single-member Stottesdon division within range, with - 6.4% now and - 8.6% in 2028; and Billingsley (LFD) to bring Highley within range, with - 9.4% by 2028. These represent a loss of 306 electors, which need replacement. To the NW are 3 small parishes at the SW end of the Much Wenlock division which need to remain together, and which are remote from the Much Wenlock/Broseley end. Easthope PC (LQD), Shipton PC (LQG) and Stanton Long PC (LQH) total 370 electors, giving back slightly more than lost. This results in Brown Clee having -3.4% now, and -3.1% in 2028, similar to before.

17. Much Wenlock (LQA to LQC, LQE, LQF + SSG)

Much Wenlock was already above the average before losing the 3 parishes at its SW end to Brown Clee (above) reducing its +6% to - 2.1% still in range. To the north, Severn Valley was nearly at the top limit by 2028, despite losing 4 parishes to Burnell to reduce the +27%. To bring Severn Valley down to +5.1%, the Harley PC (SSG) is transferred to Much Wenlock, with which it has close associations, compared to those lost, leaving the division with +2.2%.

18. Broseley (LEA to LED)

Broseley Wood, which has connections to Barrow Parish Council, had to be transferred to Much Wenlock, or Broseley would have had electors well over the maximum. By 2028, with the main part of the Town Council retained, Broseley is +9.5% very close to the upper limit.

19. Bridgnorth West & Tasley (LDD & LEE)

Currently a 2-member division, both it and its neighbour were nearly 10% below the lower limit. Previously, there were complaints that Bridgnorth was over-represented with 4 councillors, and Shifnal and Albrighton were under-represented with 3. This time, these can be reversed. The new single-member Bridgnorth West & Tasley has - 4.2% now, +7.4% in 2028. A proposal that the Wenlock Road should be the southern boundary of West is supported.

20. Bridgnorth Castle (& Astley Abbots) (LDA to LDC + LCA & LCB)

This division now has Oldbury (LDA) and the Castle polling districts (LDB & C) some of which were part of the 2-member division above. It now takes Astley Abbots (LCA) from the present East division, rather than discarding it arbitrarily, plus the western polling district (LCB) of that division. With little change in the electorates between now and 2028, Bridgnorth Castle goes from - 1.9% to - 7.9%. But the extra 160 electors from the 4 roads south of Wenlock Road would help to improve this to +2.8% and -3.5%, if LGBCE agrees.

21. Bridgnorth East (LCC to LCE)

The new division loses Astley Abbots (LCA) to Bridgnorth Castle (above). 240 electors from the Morfe Ward (LCE) are moved to the Bridgnorth Rural division east of the River Severn, leaving Bridgnorth East with +9.1% just under the 10% limit by 2028 with a logical boundary.

22. Bridgnorth Rural (LAA, LAC to LCF + LRH)

This division loses Claverley (LAB) which joins Worfield with which it has closer connections. Instead, it adds all of the southern Morfe polling district (LCF) and 240 (11%) of the northern Morfe polling district (LCE) south of the A458 Bridgnorth bypass, which is recognised as the clear southern boundary of Bridgnorth. It also adds the Hobbins area (LRH) which is remote from Worfield, and has closer connections to Bridgnorth itself. It also needs the small open area of Worfield North between the two to be added (see Appendix map). This new division, which replaces Alveley & Claverley, has -9.5% now and -6.1% by 2028. There used to be a Bridgnorth Rural before the last Review. Now it keeps to the E of the Severn along the A442.

23. Claverley & Worfield (LAB, LRA, LRB, LRD, LRE, LRI, + WAG)

This division is similar to the old County Council Morfe Ward, which comprised Claverley, Worfield, Rudge, and Harrington (with 6 parishes, 3 of which now go to Shifnal South). This time it gains Boningale (surplus to Albrighton) and ends up with +8% now, and +3% in 2028. Claverley has a direct road to Worfield via Wyken, and no direct route at all to Alveley which is 2.5 times further away than Worfield with which it and Rudge used to be linked. Any other combination is not as satisfactory and some other different proposals leave Worfield short.

24. Shifnal South (part WCR + LRC, LRF & LRG)

Shifnal South loses its arbitrary connection to 'Cosford'. The previous Review said the only commonality was the Stanton Road between Shifnal and Tong! Now it has built up to +39% now and +30% in 2028 and needed a reconfiguration with Shifnal North at +40% and +31%. It has been agreed that Bridgnorth would go down to 3 Town divisions and Albrighton and Shifnal go up to 4 to achieve a better balance. To help create an additional Shifnal division, Shifnal South takes over the 3 western (Harrington) parishes from Worfield: Kemberton, Stockton and Sutton Maddock with which it has local associations. It also donates an area north of the railway line to what this proposal has called Shifnal Central (see Appendix map).

25. Shifnal Central (part WBB & part WCR)

Shifnal Central is a new division (due to Bridgnorth Town going down from 4 to 3) and this keeps 76% of Idsall Ward (WBB) and 22% of Manor Ward (WCR) to give it a total of -0.3% now, and -6.4% by 2028, very similar to Shifnal North below (see details in the Appendix)

26. Shifnal North & Sheriffhales (WBA, part WBB, WBC + WCP, WCQ & WCS)

Shifnal North is 40% now and will go down to 31% in 2028, hence the need to make a major adjustment in going from 2 divisions to 3. This division has to lose 76% of Idsall Ward to Shifnal Central, leaving the remaining 24% behind but giving it a more recognisable southern boundary with Shifnal Rural. To compensate, it picks up Tong (WCS) adjacent to the Rural Ward (WBC) and the Donington with Boscobel Parish Council (WCQ & WCP) to the south of Tong. Because of the close links between Sheriffhales and Shifnal, both names are included in the division, even though Donington ('Cosford') is almost twice the size. The division could remain as Shifnal North, but its electorates will now be -0.5% & -6.6% (2028).

27. Albrighton (WAE & WAF)

Albrighton meets the requirement as a self-contained division. It includes Boningale (WAG) at the present time, but this addition would take the 2028 figure to +12.8%. The alternative is to add Boningale to the new Claverley & Worfield division, as it sits to the east of 2 of the existing Worfield parishes: Ryton & Grindle (LRE) and Beckbury (LRB). In future it would be associated with other similar rural parishes, and not be swamped and ignored by Albrighton. This leaves Albrighton with 3,399 (+0.9%) now, and 3,812 (+6.0%) by 2028. Proposals to split Albrighton into a N & S and Shifnal into an E & W should be rejected as inappropriate!

SHREWSBURY AREA

28. Rea Valley (SNA to SND)

No need for change, keeping Minsterley and Pontesbury with + 3.2% and + 6.2% electorates.

29. Loton (SLA to SLE, SLG + SKA)

There is a fairly simple solution to compensate Loton for the loss of Westbury. Adding Ford Parish Council from Longden fits geographically with road links to Alberbury with Cardeston. It ends up little different to the original, with an acceptable -1.75% now and - 0.75% in 2028.

30. Longden (SKB to SKF + SUB)

Longden loses Ford, but gains Bicton Parish Council (SUB) and ~200 extra electors from Tern to the north, reducing its 'donut' effect round the north of Shrewsbury. The alternative was to take around 900 electors from the Radbrook division to the east which was way OTT with over 30% above the average. But it was felt that the Radbrook surplus was needed for divisions in Shrewsbury that were under the limit and had little choice in borrowing from their neighbours. So Longden ends up with + 7.7% now and + 6.1% in 2028 and leaves the town to adjust its boundaries for the benefit of the town divisions, keeping Longden more rural.

31. Tern (SUA, SUC to SUJ + NMC)

Tern was up 15% now, but down to + 8% in 2028 with SUB. One advantage of losing Bicton is that it can help to resolve the potential + 13% in Shawbury by taking on Hadnall Parish Council (NMC) that fits in to the hollow between SUG and SUA north of Shrewsbury. This reduces the total for Tern to + 9.3% now and + 4.6% in 2028, having ~ 200 electors less.

32. Quarry & Coton Hill (SQA, SQB & SQC)

No need for change, with the present and future electorate at - 3% north-west of the Severn, with the railway line forming the eastern boundary.

33. Bagley (SBA & SBB)

Bagley has +13% currently, but down to +9% within range by 2028. Although it will be in range, some electors could be transferred to Harlescott. See the Appendices for details.

34. Harlescott (SJA & SJB)

Harlescott is -1% now and will fall to - 5% by 2028. Could benefit at the expense of Bagley.

35. Battlefield (SCA & SCB & STC)

Battlefield has +3% now and down to +2% in 2028. An exchange with the adjacent Sundorne brings Sundorne in range.

36. Sundorne (STA & STB)

Sundorne has a reducing electorate and will be - 17% by 2028. Gets help from Battlefield.

37. Castlefields & Ditherington (SHA & SHB)

This division is just over the average in both cases (+1%) and needs no change at all.

38. Underdale (SVA)

A reducing electorate will be -16% by 2028, but gets help from the north west of Abbey around the railway lines, with access via Underdale Road, Abbey Foregate & Old Potts Way.

39. Monkmoor (SOA & SOB)

Monkmoor will fall to -13% by 2028, but also gets help from Abbey to come within range. The small triangular area north of Dark Lane and Belvidere Road gives Monkmoor - 8.1%.

40. Abbey (SAA & SAB)

Abbey is just over the average now (+1%) but will be - 4% by 2028. It has donated 524 electors to Underdale and Monkmoor, but gets back 603 from Sutton & Reabrook division.

41. Bowbrook (SFA)

Bowbrook is to the west of Shrewsbury and maintains a +2% throughout. No change here.

42. Radbrook (SRA & SRB)

Radbrook has a large surplus, +32% now, +33% by 2028. Great opportunities for sharing with three of its neighbouring divisions. See the yellow areas on the map in the Appendices.

43. Meole (SMA, SMB & SMC)

Meole is also adjacent to Radbrook so with -5% in 2028 it can take on 259 electors from the Six Acres estate from the Radbrook surplus, and it also removes the dogleg in the boundary.

44. Porthill (SPA, SPB & SPC)

Porthill has a reducing electorate and is - 11% by 2028. Once again, it doesn't need much to bring in range with 194 electors in the triangular area to the NE

45. Copthorne (SIA, SIB, SIC & SID)

Copthorne just scrapes in with - 10% in 2028. It can benefit from the Radbrook high surplus with 419 electors from the Crowmeole area to change its 2028 figure to a welcome +1.3%.

46. Belle Vue (SEA & SEB)

Belle Vue is +2% now and - 2% in 2028, so is fairly well balanced without needing support.

47- 49. Bayston Hill, Column & Sutton (SDA, SDB, SDC, SDD & SDE)

Currently a 3 member division, it is intended to change it to 3 single member divisions. As Bayston Hill on its own has +22% now and in 2028, it would need a partial split. The options have been considered in the Appendix on the Shrewsbury Electoral Figures but need more detailed analysis, although it has been difficult to get hold of the electoral data required.

NORTH SHROPSHIRE

50. Shawbury (NMA, NMB, NMD to NMG)

Shawbury is at +11% now and is predicted to be +13% by 2028. The adjacent Hodnet has an electorate of -10% now and -7% by 2028. It would seem that transferring a few hundred electors from Shawbury to Hodnet would solve the problem. But there isn't a parish of the right size near the boundary that doesn't cover a large geographical area. With the BCE transferring Hodnet & Cheswardine from North Shropshire to The Wrekin constituency, it will be sensible to keep those two divisions unchanged. Instead, with the loss of Bicton Parish (SUB) to Longden to compensate for the loss of Ford, Tern needed more electors, or it would have been -17% by 2028. The solution was to include Hadnall Parish (NMC) from Shawbury with 709 electors now and 778 by 2028, but it leaves Shawbury with -9.97% and -9.0%, very close to the minimum but with plenty of room for expansion in the future.

51. Hodnet (NCA to NCF)

Although its electorate is below the county average it does improve by 2028 to -7.1% so it seems unnecessary to change it for the reasons above. It is within range.

52. Cheswardine (NAA to NAD)

Cheswardine is well balance with +1.5% now and -0.6% in 2028. No need for any change.

53. Market Drayton East (NEA to NEE)

Market Drayton East includes the 2 parishes in the NE peninsula: Norton Hales and Woore. If all the Market Drayton electors are combined, it totals 10,807 now and 11,508 in 2028. For 3 separate divisions, this would provide a well-balanced average of +6.9% now and +6.7% in the future. In order to correspond with the polling districts, Market Drayton West should become Market Drayton North NFA to NFC and Market Drayton South (NFD & NFE) North electorate is far greater than South, and for a start, the polling district at the southern end (NFC) should be renamed South. By itself this is not enough, and the East division needs to come down from a high of +16%. See the Market Drayton map and details in the Appendix.

54. Market Drayton North (NFA & part NFB)

This new division (rather than a West 1 & 2) has the whole of NFA and most of NFB above the area coloured yellow on the map in the Appendix. NFB loses 450 electors to NFE, and NFE also gains 270 electors from East. North then has 3,438 (+7.9%) and 3,862 (+7.4%).

55. Market Drayton South (NFC to NFE + part NFB & part NEA)

Market Drayton South is just above the limit now (+10.8%) but falls to +4.8% by 2028. The biggest increase in new housing is in the north of NFB, which has been taken into account.

56. Prees (NJA, NJC to NJF)

Prees is estimated to be +24% by 2028 from a figure of +8% now. A solution both logical and geographical would be to add Adderley to Market Drayton, but that would have upset the possibility of getting the 3 divisions in range. The only possible alternative is to add Ightfield Parish Council to the adjacent Whitchurch South, which is mainly rural. Prees then ends up with 3,206 (-4.8%) and due to the big forecast increase, with 3,983 (+10.8%). (With Adderley instead of Ightfield it would have been +8.7%) However, it will benefit Whitchurch!

57. Whitchurch South (NSA to NSD + NJB)

Whitchurch South is in range, going from -4.5% to +6.7%, whereas Whitchurch North will be -6.7%. The addition of Ightfield takes Whitchurch South to nearly +20%, ideal for giving away some of the northern urban part to Whitchurch North to balance up. The residential area on both sides of Station Road fit the bill, adding 519 electors to North. See Appendix for details.

58. Whitchurch North (NRA, NRB + part NSA)

This uses the two North wards (NRA & NRB) totalling 2,759 plus the 519 from South (3,278). By 2028 the new total will be 3,672 (+2.1% from -2.7% now). See the Appendix for details.

59. Whitchurch West (NRC & NRD)

Whitchurch West has enough electors on its own not to need change with -2% going to -1%. The new name above corresponds with the names of the polling districts to avoid confusion.

60. Wem North (NQA, NQB, NQD, NQG & NQH)

Wem was a self-contained 2-member division almost on the county average. Not needing support from elsewhere, it seems to give a better balance by splitting Wem into a North and South. Wem North would have 3,556 (+5.5%) now and 3,613 (+0.5%) in 2028. Case closed.

61. Wem South (NQC, NQE & NQF)

In a similar way, Wem South would have 3,269 (-3.0%) now and 3,579 (-0.4%) by 2028.

62. The Meres (NPA to NPC, NPE to NPJ)

The Meres were oversubscribed with +16% and +18% but the loss of Welsh Frankton Ward (NPD) to St Martin's solves the surplus problem, leaving 3,562 (+5.7%) and 3,656 (+1.7%).

63. Ellesmere Urban (NBA & NBB)

This division needs no alteration, with 3,375 (+0.2%) now, and 3,587 (+0.2%) by 2028.

64. Ruyton & Baschurch (NKA to NKD)

This division needs no alteration, with 3,363 (-0.2%) now, and 3,786 (+5.3%) by 2028.

65. Whittington (NTA & NTB)

This division need no alteration, with 3,417 (+1.4%) now, and 3,797 (+5.6%) by 2028.

66. Llanymynech (NDA to NDI)

This division needs no alteration, with 3,507 (+4.1%) now, and 3,775 (+5.0%) by 2028.

67. St Oswald (NLD & NOA to NOD)

This division claims the Rhydycroesau & Llanforda (NLD) polling district from Gobowen & Selattyn. This brings all of Oswestry Rural together, after the above being the odd one out. It increases the current electorate to 3,694 (+9.6%) but this falls to 3,784 (+5.3%) by 2028.

OSWESTRY

Oswestry East is a 2-member division, making 2 separate divisions named Oswestry NE and Oswestry SE. Oswestry West is renamed Oswestry North due to its extension to the NE, and Oswestry South remains as it is, with both electorates around the county average.

68. Oswestry NE (part NGA & NGB)

This division needs to help out the new-named Oswestry North, by transferring the polling district NGC to the northwest of the railway line which becomes the new boundary south of the Gobowen Road. The NGB polling district is unaffected but with all NGA the electorates would be 3,843 and 4,031 while Oswestry SE (NGD) would be left with 2,517 and 2,900. In order to balance the two separate divisions, the triangular area in NGA between Cabin Lane and the Middleton Road would be transferred to NGD. The Oswestry Appendix has details.

69. Oswestry SE (NGD + part NGA)

The 624 electors from NGA are almost the same number as given away to Oswestry North. Adding these to the NGD total brings it in range with 3,141 (-6.8%) and 3,524 (-2%) in 2028.

70. Oswestry North (NIA to NIC + NGC)

The new total for this division is 3,499 (+3.9%) now and 3,523 (-2.0%) by 2028 now in range.

71. Oswestry South (NHA to NHC)

No alteration as the division is at the county average with 3,356 (-0.4%) and 3,600 (+0.1%).

ST MARTIN'S with GOBOWEN, SELATTYN & WESTON RHYN

St Martin's gained NPD from The Meres, and the latter is currently a 2-member division and lost NLD polling district to St Oswald. Adding all the electorates of these 3 divisions together gives totals of 9,415 and 10,634. Dividing these by 3 gives 3,138 (-6.8%) and 3,545 (-1.4%).

72. St Martin's (part NNA, NNB, NNC, NND + NPD)

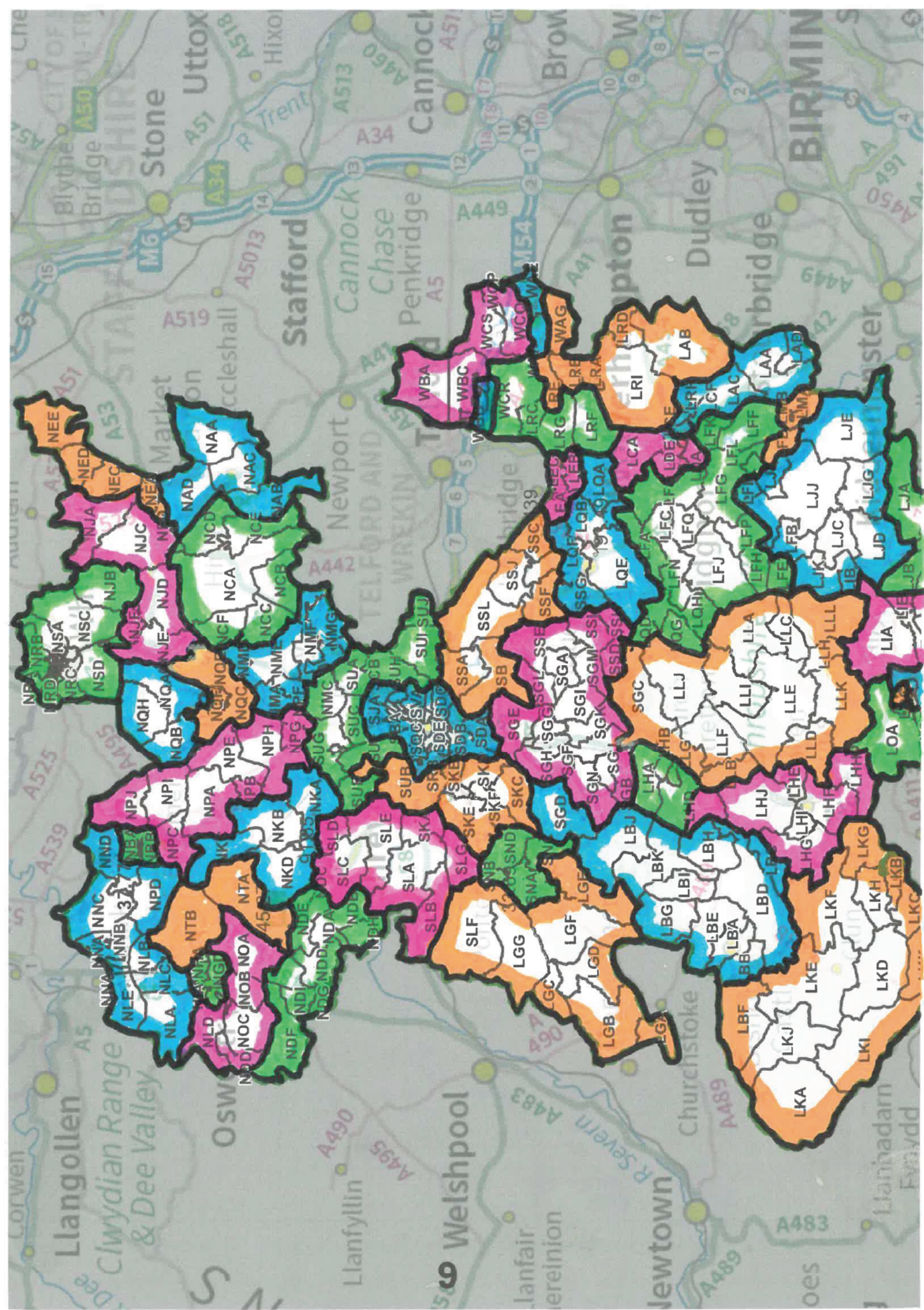
Adding NPD to this division will give 3,138 (-6.8%) now and around 3,545 (-1.4%) by 2028.

73. Gobowen & Selattyn (NLA, part NLB & NLC)

Leaving out Weston Rhyn gives a total of 3,138 (-6.8%) and around 3,545 (-1.4%) by 2028.

74. Weston Rhyn & Chirk Bank (NLE, part NNA & part NLB)

By accepting splits, this revision provides 3,138 (-6.8%) and around 3,545 (-1.4%) by 2028.



Division name, PDs & Parishes		2022		2028	
01. Clun		3,235	- 3.98%	3,298	- 8.3%
LBF	Mainstone Parish Council (from B's Castle)	83		84	
LKA	Bettws-y-Crwyn Parish Council	176		184	
LKB	Bedstone Parish Council	53		53	
LKC	Bucknell Parish Council	607		617	
LKD	Clun Town Council with Chapel Lawn (Ward)	149		150	
LKE	Clun Town Council with Chapel Lawn (Clun)	808		816	
LKF	Clunbury Parish Council	460		465	
LKG	Clungunford Parish Council	262		270	
LKH	Hopton Castle Parish Meeting	90		99	
LKI	Llanfairwaterdine Parish Council	189		197	
LKJ	Newcastle on Clun Parish Council	247		247	
LKK	Stowe Parish Meeting	106		107	
02. Bishop's Castle		3,152	- 6.4%	3,245	- 9.7%
LBA	Bishop's Castle Parish Council	1,500		1,538	
LBB	Colebatch Parish Council	76		76	
LBC	Edgton Parish Meeting	88		93	
LBD	Lydbury North Parish Council	435		458	
LBE	Lydham & More Parish Meeting	160		166	
LBG	Lydham & More Parish Meeting	81		82	
LBH	Myndtown Parish Council	65		66	
LBI	Norbury Parish Council	112		117	
LBJ	Ratlinghope Parish Council	117		119	
LBK	Wentnor Parish Council	210		212	
SGB	All Stretton Parish Council (from Burnell)	112		112	
SGJ	Leebotwood Parish Council (from Burnell)	196		206	
03. Chirbury & Worthen		3,091	- 8.25%	3,262	- 9.3%
LGA	Chirbury with Brompton PC (B & R Ward)	92		97	
LGB	Chirbury with Brompton PC (Chirbury Ward)	294		374	
LGC	Chirbury with Brompton PC (Marton Ward)	164		181	
LGD	Chirbury with Brompton PC (Middleton Ward)	188		193	
LGE	Worthen with Shelve PC (Heath Ward)	475		476	
LGF	Worthen with Shelve PC (Hope & Shelve Ward)	499		515	
LGG	Worthen with Shelve PC (Worthen Ward)	668		684	
SLF	Westbury Parish Council (W'bury from Loton)	711		742	
04. Church Stretton		3,815	+ 13.2%	3,849	+ 7.1%
LHA	Church Stretton Town Council (All Stretton)	403		375	
LHB	Church Stretton Town Council (North Ward)	1,614		1,686	
LHC	Church Stretton Town Council (South Ward)	1,648		1,639	
LHD	Church Stretton TC (Little Stretton Ward part)	150		149	
05. Craven Arms		3,492	+ 3.65%	3,849	+ 7.1%
LHD	Church Stretton TC (Little Stretton Ward part)	141		140	

Division name, PDs & Parishes		2022		2028	
LHE	Craven Arms Town Council	73		72	
LHF	Craven Arms Town Council	1,859		2,195	
LHG	Hopesay Parish Council	429		452	
LHH	Onibury Parish Council	253		268	
LHI	Sibdon Carwood Parish Meeting	95		58	
LHJ	Wistanstow Parish Council	642		664	
06.	Burnell	3,584	+ 6.4%	3,845	+7.0%
SGA	Acton Burnell Parish Council	236		295	
SGB	All Stretton Parish Council	112		112	
SGE	Condover Parish Council (Condover Ward)	708		720	
SGF	Condover Parish Council (Dorrington Ward)	566		657	
SGG	Condover Parish Council (Ryton Ward)	211		227	
SGH	Condover Parish Council (Stapleton Ward)	218		230	
SGI	Frodesley Parish Council	135		139	
SGJ	Leebotwood Parish Council	196		206	
SGK	Longnor Parish Council	223		228	
SGL	Pitchford Parish Council	85		90	
SGM	Ruckley & Langley Parish Council	61		75	
SDN	Smethcott Parish Council	166		166	
SGO	Woolstaston Parish Council	52		60	
SSD	Church Preen Parish Council (Severn Valley)	75		78	
SSE	Cound Parish Council (Severn Valley)	389		398	
SSH	Hughley Parish Council (Severn Valley)	48		49	
SSI	Kenley Parish Council (Severn Valley)	103		115	
07.	Severn Valley	3,019	- 10.4%	3,778	+ 5.1%
SSA	Atcham Parish Council	427		444	
SSB	Berrington Parish Council	952		1,117	
SSC	Buildwas Parish Council	251		712	
SSF	Cressage Parish Council	617		729	
SSJ	Leighton & Eaton Constantine Parish Council	378		382	
SSK	Sheinton Parish Council	87		87	
SSL	Wroxeter & Uppington Parish Council	307		307	
08.	Corvedale	3,406	+ 1.1%	3,468	- 3.5%
LLA	Abdon & Heath Parish Council	174		185	
LLB	Acton Scott Parish Meeting	88		85	
LLC	Clee St Margaret Parish Council	140		147	
LLD	Culmington Parish Council	309		337	
LLE	Diddlebury Parish Council	532		544	
LLF	Eaton-under-Haywood Parish Council	144		145	
LLG	Hope Bowdler Parish Council	198		201	
LLH	Hopton Cangeford Parish Council	43		42	
LLI	Munslow Parish Council	316		317	
LLJ	Rushbury Parish Council	536		518	
LLK	Stanton Lacy Parish Council	282		286	

Division name, PDs & Parishes		2022		2028	
LLL	Stoke St Milborough Parish Council	286		294	
SGC	Cardington Parish Council (from Burnell)	358		367	
09.	Ludlow North	3,103	- 7.9%	3,321	- 7.6%
LOA	Bromfield Parish Council	221		225	
LOB	Ludlow Town Council (Bringewood Ward)	894		1,151	
LOC	Ludlow Town Council (Corve Ward)	965		939	
LOD	Ludlow Town Council (Whitcliffe Ward)	1,023		1,006	
10.	Ludlow East	3,231	- 4.1%	3,156	- 12.2%
LNA	Ludlow Town Council (Clee View Ward)	1,073		1,026	
LNB	Ludlow Town Council (Hayton Ward)	966		922	
LNC	Ludlow Town Council (Rockspring Ward)	977		993	
LPD	Dahn Drive & Riddings Park from South	215		215	
11.	Ludlow South	3,002	- 10.9%	3,653	+ 1.6%
LPA	Ashford Bowdler Parish Meeting	59		60	
LPB	Ashford Carbonell Parish Council	293		323	
LPC	Ludford Parish Council	514		1,122	
LPD	Ludlow Town Council (Gallows Bank Ward)	1,864		1,870	
LPE	Richards Castle Parish Council	272		278	
12.	Clee	3,163	- 6.1%	3,333	- 7.3%
LIA	Bitterley Parish Council (Bitterley Ward)	684		688	
LID	Burford Parish Council	1,036		1,184	
LIE	Caynham Parish Council (Clee Ward)	719		722	
LIF	Caynham Parish Council (Knowbury Ward)	483		495	
LIG	Greete Parish Meeting	84		86	
LIH	Hope Bagot Parish Meeting	56		56	
LIJ	Whitton Parish Meeting	101		102	
13.	Cleobury Mortimer	3,470	+ 3.0%	3,534	- 1.7%
LIC	Boraston Parish Meeting (from Clee)	148		149	
LII	Nash Parish Council (from Clee)	273		276	
LJA	Cleobury Mortimer Town Council	2,520		2,577	
LJB	Coreley Parish Council	310		311	
LJF	Milson Parish Council	83		83	
LJH	Neen Sollars Parish Council	136		138	
14.	Stottesdon	3,154	- 6.4%	3,286	- 8.6%
LFB	Aston Botterell PC (from Brown Clee)	58		65	
LFM	Middleton Scriven PC (from Brown Clee)	65		65	
LIB	Bitterley Parish Council (from Clee)	61		61	
LJC	Farlow Parish Council	347		357	
LJD	Hopton Wafers Parish Council	667		694	
LJE	Kinlet Parish Council	843		881	
LJG	Neen Savage Parish Council	284		291	

Division name, PDs & Parishes		2022		2028	
LJI	Sidbury Parish Council	40		40	
LJJ	Stottesdon Parish Council	633		658	
LJK	Wheathill Parish Council	156		174	
15.	Highley	3,024	- 10.2%	3,258	- 9.4%
LFD	Billingsley Parish Council (from Brown Clee)	158		176	
LMA	Highley Parish Council	1,415		1,472	
LMB	Highley Parish Council	1,451		1,610	
16.	Brown Clee	3,255	- 3.4%	3,484	- 3.1%
LFA	Acton Round Parish Council	105		105	
LFC	Aston Eyre Parish Council	59		59	
LFE	Burwarton Parish Council	93		101	
LFF	Chelmarsh Parish Council	432		445	
LFG	Chetton Parish Council	286		371	
LFH	Cleobury North Parish Council	86		86	
LFI	Deuxhill Parish Council	21		21	
LFJ	Ditton Priors Parish Council	659		707	
LFK	Eardington Parish Council	497		499	
LFL	Glazeley Parish Council	39		39	
LFN	Monkhopton Parish Council	162		197	
LFO	Morville Parish Council	322		336	
LFP	Neenton Parish Meeting	106		108	
LFQ	Upton Cressett Parish Council	40		40	
LQD	Easthope Parish Council (from Much Wenlock)	73		78	
LQG	Shipton Parish Council (from Much Wenlock)	100		112	
LQH	Stanton Long PC (from Much Wenlock)	175		180	
17.	Much Wenlock	3,321	- 1.4%	3,595	+ 0.0%
LQA	Barrow Parish Council	133		133	
LQB	Barrow Parish Council	425		431	
LQC	Broseley Town Council (Broseley Wood)		248		253
LQE	Much Wenlock Town Council	1,188		1,421	
LQF	Much Wenlock Town Council	1,175		1,202	
SSG	Harley Parish Council (from Severn Valley)	152		155	
18.	Broseley (no change)	3,792	+ 12.6%	3,937	+ 9.5%
LEA	Broseley Town Council (East Ward)	928		972	
LEB	Broseley Town Council (East Ward)	1,303		1,361	
LEC	Broseley Town Council (East Ward)	163		186	
LED	Broseley Town Council (West Ward)	1,398		1,418	

Division name, PDs & Parishes		2022		2028	
19.	Bridgnorth West & Tasley	3,066	- 9.0%	3,701	+ 3.0%
LDD	Bridgnorth TC (West Ward) – 160 electors *	2,229		2,138	
LDE	Tasley Parish Council	837		1,563	
20.	Bridgnorth Castle & Astley Abbots	3,464	+ 2.8%	3,469	- 3.5%
LDA	Bridgnorth Town Council (Oldbury)	298		308	
LDB	Bridgnorth Town Council (Castle Ward)	662		660	
LDC	Bridgnorth Town Council (Castle Ward)	1,285		1,288	
LCA	Astley Abbots Parish Council	397		390	
LCB	Bridgnorth Town Council (East Ward)	662		663	
LDD	Portmans Way estate S of Wenlock Road *	160		160	
21.	Bridgnorth East	3,842	+ 14%	3,923	+ 9.1%
LCC	Bridgnorth Town Council (East Ward)	1,197		1,272	
LCD	Bridgnorth Town Council (East Ward)	685		677	
LCE	Bridgnorth Town Council (Morfe part)	1,960		1,974	
22.	Bridgnorth Rural	3,048	- 9.5%	3,376	- 6.1%
LAA	Alveley Parish Council	1,763		2,060	
LAC	Quatt Malvern Parish Council	190		191	
LAD	Romsley Parish Council	96		96	
LCE	Bridgnorth Town Council (Morfe part)	240		240	
LCF	Bridgnorth Town Council (Morfe Ward)	373		388	
LRH	Worfield Parish Council (Hobbins Ward)	386		401	
23.	Claverley & Worfield	3,631	+ 8.0%	3,690	+ 2.9%
WAG	Boningale Parish Council (from Albrighton)	248		244	
LRA	Badger Parish Council	101		104	
LRB	Beckbury Parish Council	287		280	
LRD	Rudge Parish Council	81		102	
LRE	Ryton & Grindle Parish Council	138		128	
LRI	Worfield Parish Council (North Ward)	1,320		1,329	
LAB	Claverley Parish Council (from Alveley)	1,456		1,503	
24.	Shifnal South	3,309	- 1.9%	3,308	- 8.0%
WCR	Shifnal Town Council (Manor Ward part)	2,655		2,658	
LRC	Kemberton Parish Council (from Worfield)	180		162	
LRF	Stockton Parish Council (from Worfield)	264		279	
LRG	Sutton Maddock P Council (from Worfield)	210		209	
25.	Shifnal Central	3,359	- 0.3%	3,364	- 6.4%
WBB	Shifnal Town Council (Idsall Ward part)	2,613		2,618	
WCR	Shifnal Town Council (Manor Ward part)	746		746	

Division name, PDs & Parishes		2022		2028	
26. Shifnal North & Sheriffhales		3,353	- 0.5%	3,358	- 6.6%
WBA	Sheriffhales Parish Council	592		597	
WBB	Shifnal Town Council (Idsall Ward part)	748		748	
WBC	Shifnal Town Council (Rural Ward)	747		746	
WCP	Boscobel Parish (from SS & Cosford)	11		11	
WCQ	Donington Parish Council (from SS & Cosford)	1,044		1,044	
WCS	Tong Parish Council (from SS & Cosford)	211		212	
27. Albrighton		3,399	+ 0.9%	3,812	+ 6.0%
WAE	Albrighton Parish Council	1,202		1,613	
WAF	Albrighton Parish Council	2,197		2,199	

SHREWSBURY AREA

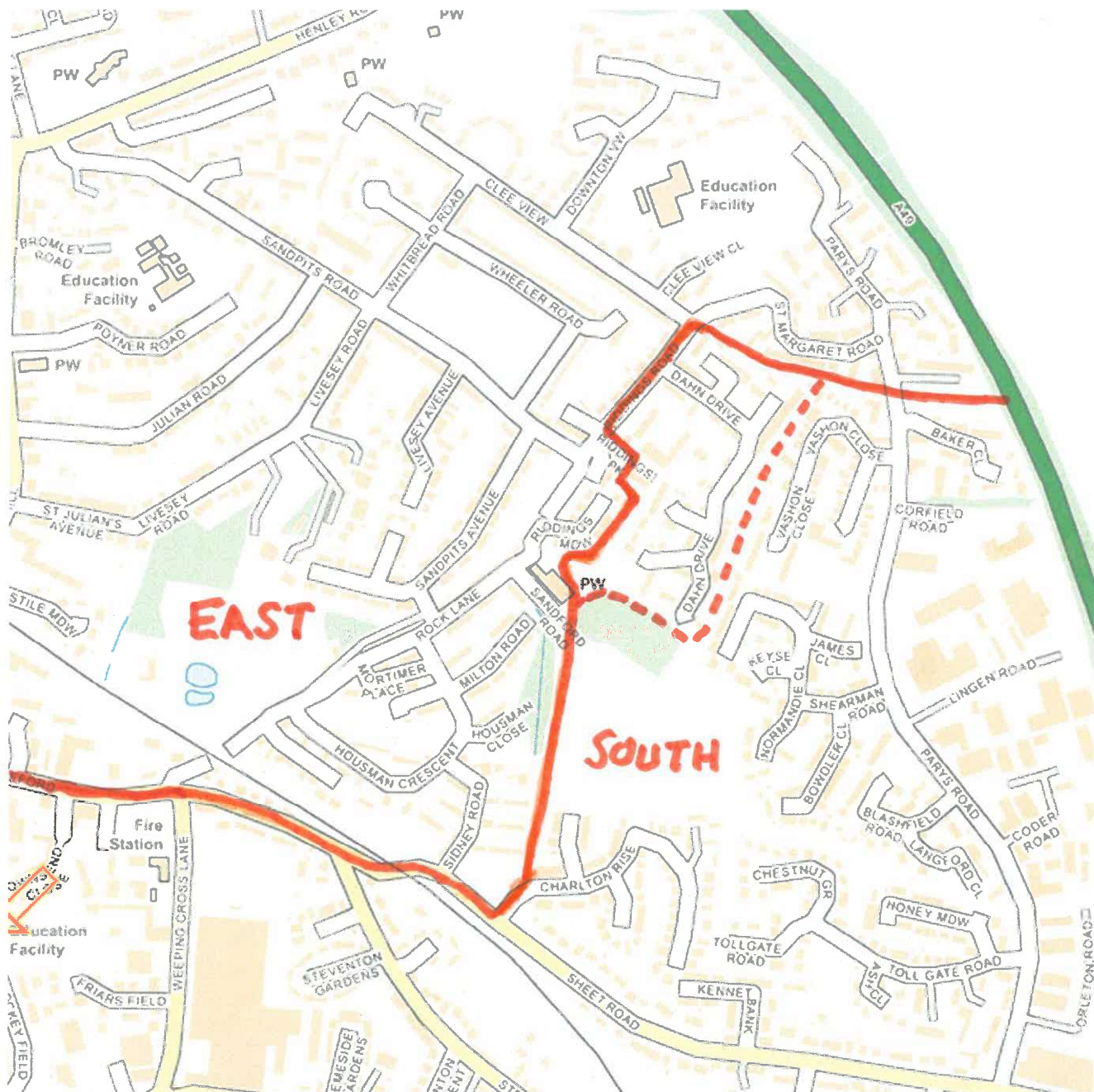
28. Rea Valley (no change)		3,476	+ 3.2%	3,819	+ 6.2%
SNA	Minsterley Parish Council	1,517		1,681	
SNB	Pontesbury Parish Council (Asterley Ward)	120		122	
SNC	Pontesbury Parish Council (Habberley Ward)	91		99	
SND	Pontesbury Parish Council (Pontesbury Ward)	1,748		1,917	
29. Loton		3,310	- 1.75%	3,568	- 0.75%
SKA	Ford Parish Council (from Longden)	683		784	
SLA	Alberbury with Cardeston Parish Council	263		273	
SLB	Alberbury with Cardeston Parish Council	507		533	
SLC	Great Ness Parish Council	812		894	
SLD	Little Ness Parish Council	207		220	
SLE	Montford Parish Council	472		492	
SLG	Westbury Parish Council (Yockleton Ward)	366		372	
30. Longden		3,629	+ 7.7%	3,814	+ 6.1%
SKB	Great Hanwood Parish Council	945		1,065	
SKC	Longden Parish Council (Longden Ward)	543		561	
SKD	Longden Parish Council (Hook-a-Gate Ward)	500		539	
SKE	Pontesbury Parish Council (Cruckton Ward)	474		481	
SKF	Pontesbury Parish Council (Plealey Ward)	261		263	
SUB	Bicton Parish Council (from Tern)	906		905	
31. Tern		3,683	+ 9.3%	3,761	+ 4.6%
NMC	Hadnall Parish Council (from Shawbury)	709		778	
SUA	Astley Parish Council	397		397	
SUC	Bomere Heath etc PC (Albrighton Ward)	46		48	
SUD	Bomere Heath etc PC (Bomere Heath Ward)	1,099		1,104	
SUE	Bomere Heath etc PC (Fitz Ward)	261		260	
SUF	Bomere Heath etc PC (Leaton Ward)	176		177	
SUG	Bomere Heath etc PC (Preston Gubbals Ward)	280		280	
SUH	Uffington Parish Council	243		243	

Division name, PDs & Parishes		2022		2028	
SUI	Upton Magna Parish Council	292		293	
SUJ	Withington Parish Council	180		181	
32.	Quarry & Coton Hill (no change)	3,271	- 2.9%	3,488	- 3.0%
SQA	Shrewsbury TC (Quarry & Coton Hill Ward)	1,544		1,632	
SQB	Shrewsbury TC (Quarry & Coton Hill Ward)	647		772	
SQC	Shrewsbury TC (Quarry & Coton Hill Ward)	1,080		1,084	
33.	Bagley (possibly no change)	3,809	+13.1%	3,901	+8.5%
SBA	Shrewsbury Town Council (Bagley Ward)	2,542		2,633	
SBB	Shrewsbury Town Council (Bagley Ward)	1,267		1,268	
34.	Harlescott (no change)	3,336	- 1.0%	3,412	- 5.1%
SJA	Shrewsbury Town Council (Harlescott Ward)	2,407		2,410	
SJB	Shrewsbury Town Council (Harlescott Ward)	929		1,002	
35.	Battlefield	3,127	- 7.2%	3,347	- 6.9%
SCA	Shrewsbury Town Council (Battlefield Ward)	810		810	
SCB	Shrewsbury Town Council (Battlefield Ward)	2,131		2,344	
STC	Shrewsbury Town Council (Sundorne Ward)	186		193	
36.	Sundorne	3,476	+3.2%	3,319	- 7.7%
STA	Shrewsbury Town Council (Sundorne Ward)	2,069		1,967	
STB	Shrewsbury Town Council (Sundorne Ward)	877		822	
SCA	Shrewsbury TC (Battlefield Ward part)	530		530	
37.	Castlefields & Ditherington (no change)	3,404	+1.0%	3,625	+0.8%
SHA	Shrewsbury TC (Castlefields & Ditherington)	2,164		2,186	
SHB	Shrewsbury TC (Castlefields & Ditherington)	1,240		1,439	
38.	Underdale	3,476	+3.2%	3,569	- 0.7%
SVA	Shrewsbury Town Council (Underdale Ward)	3,117		3,010	
SAB	Shrewsbury Town Council (Abbey Ward part)	359		359	
39.	Monkmoor	3,218	-4.5%	3,304	- 8.1%
SOA	Shrewsbury Town Council (Monkmoor Ward)	1,382		1,358	
SOB	Shrewsbury Town Council (Monkmoor Ward)	1,836		1,781	
SAA	Shrewsbury Town Council (Abbey Ward part)	165		165	
40.	Abbey	3,485	+3.4%	3,530	- 1.8%
SAA	Shrewsbury Town Council (Abbey Ward)	1,185		1,197	
SAB	Shrewsbury Town Council (Abbey Ward)	1,697		1,730	
SDD	Shrewsbury Town Council (Sutton & Reabrook)	603		603	
41.	Bowbrook	3,423	+1.6%	3,665	+1.9%
SFA	Shrewsbury Town Council (Bowbrook Ward)	3,423		3,665	

Division name, PDs & Parishes		2022		2028	
42. Radbrook		3,565	+5.8%	3,907	+8.7%
SRA	Shrewsbury Town Council (Radbrook Ward)	1,459		1,467	
SRB	Shrewsbury Town Council (Radbrook Ward)	2,106		2,440	
43. Meole		3,634	+7.9%	3,665	+1.9%
SMA	Shrewsbury Town Council (Meole Ward)	1,098		1,104	
SMB	Shrewsbury Town Council (Meole Ward)	1,696		1,719	
SMC	Shrewsbury Town Council (Meole Ward)	581		583	
SRA	Shrewsbury Town Council (Radbrook part)	259		259	
44. Porthill		3,526	+4.7%	3,407	- 5.2%
SPA	Shrewsbury Town Council (Porthill Ward)	1,309		1,276	
SPB	Shrewsbury Town Council (Porthill Ward)	1,655		1,543	
SPC	Shrewsbury Town Council (Porthill Ward)	368		394	
SRA	Shrewsbury Town Council (Radbrook part)	194		194	
45. Copthorne		3,635	+7.9%	3,643	+1.3%
SIA	Shrewsbury Town Council (Copthorne Ward)	973		976	
SIB	Shrewsbury Town Council (Copthorne Ward)	1,187		1,187	
SIC	Shrewsbury Town Council (Copthorne Ward)	574		578	
SID	Shrewsbury Town Council (Copthorne Ward)	482		483	
SRB	Shrewsbury Town Council (Radbrook part)	419		419	
46. Belle Vue		3,450	+2.4%	3,534	- 1.7%
SEA	Shrewsbury Town Council (Belle Vue Ward)	1,226		1,303	
SEB	Shrewsbury Town Council (Belle Vue Ward)	2,224		2,231	
47. Bayston Hill	(less 510 from SDA)	3,602	+6.9%	3,888	+8.1%
SDA	Shrewsbury Town Council (Bayston Hill)	994		1,274	
SDB	Shrewsbury Town Council (Bayston Hill)	2,608		2,614	
48. Column	(half the 510 from SDA)	3,190	-5.3%	3,899	+8.5%
SDC	Shrewsbury Town Council (Column Ward)	2,935		3,644	
SDA	Shrewsbury Town Council (Bayston Hill part)	255		255	
49. Sutton & Reabrook	(less 603 to Abbey)	3,063	-9.1%	4,028	+12%
SDD	Shrewsbury TC (Sutton & Reabrook Ward)	1,009		1,009	
SDE	Shrewsbury TC (Sutton & Reabrook Ward)	1,799		2,764	
SDA	Shrewsbury Town Council (Bayston Hill part)	255		255	

NORTH SHROPSHIRE

Further information available in the Appendices



Adjustment of boundary between Ludlow East and Ludlow South

Ludlow East is currently at the bottom limit with -10.5% and is expected to be -18.2% by 2028. Whereas Ludlow South is expecting a big expansion of ~650 by 2028, giving it +8%. (Ludlow North is at -8% on both dates so couldn't help)

The proposal above is to move Dahn Drive and Riddings Park to Ludlow East. They only have access from Riddings Road in the East division and are not accessible from within the South division. There are 215 electors involved here.

The **Ludlow East** total would become 3,231 (-4.1%) and 3,157 (-12.2%)

The **Ludlow South** total would become 3,002 (-10.9%) and 3,654 (+1.6%)

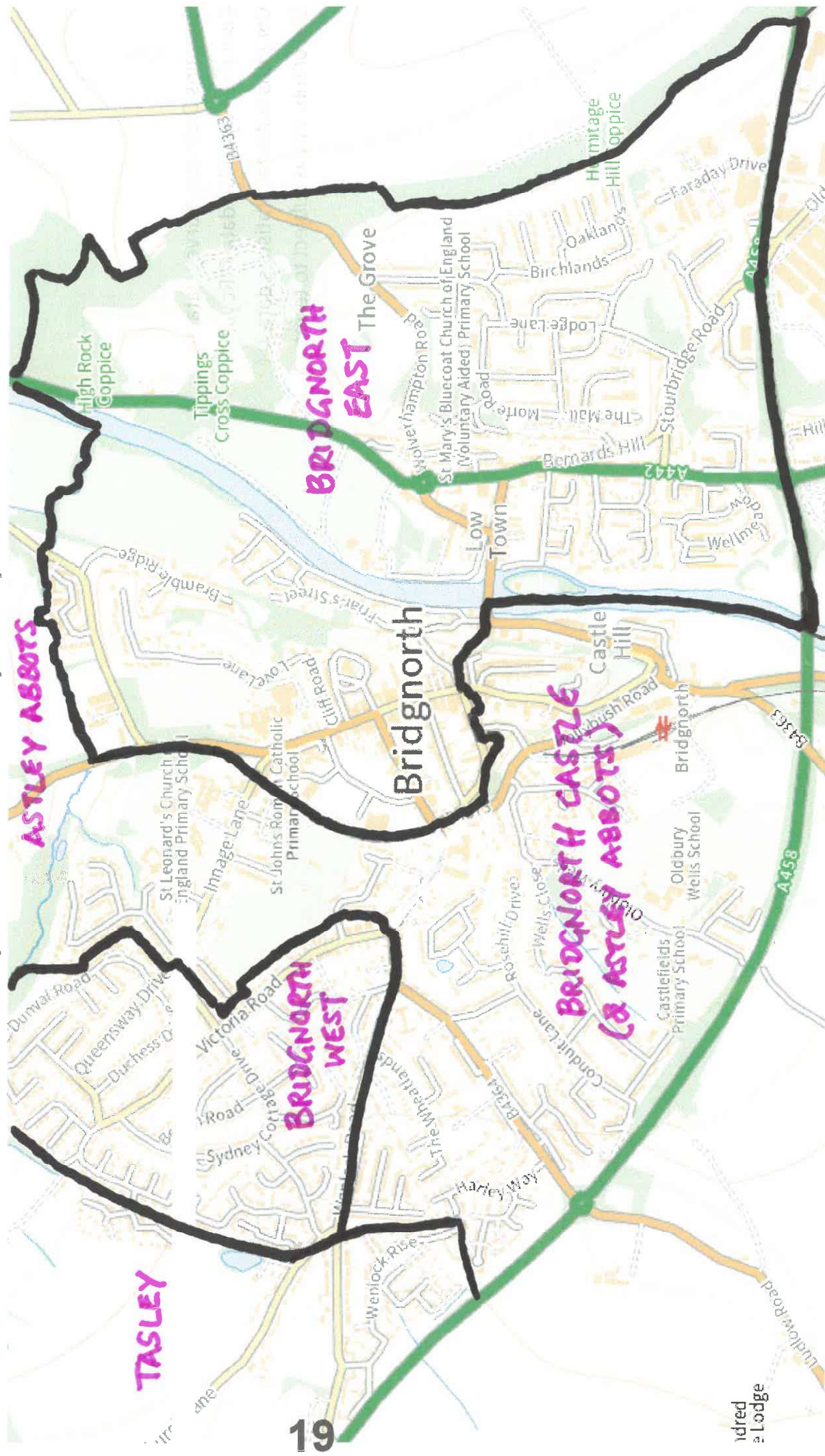
It reduces the Ludlow East total by 6% by 2028, but still outside the +/-10% tolerance expected. There is little else possible to improve on this suggestion.



ELECTION MAPS

CLICK INSIDE A BOUNDARY FOR MORE INFO

Unitary Authorities — Unitary Authority Electoral Divisions



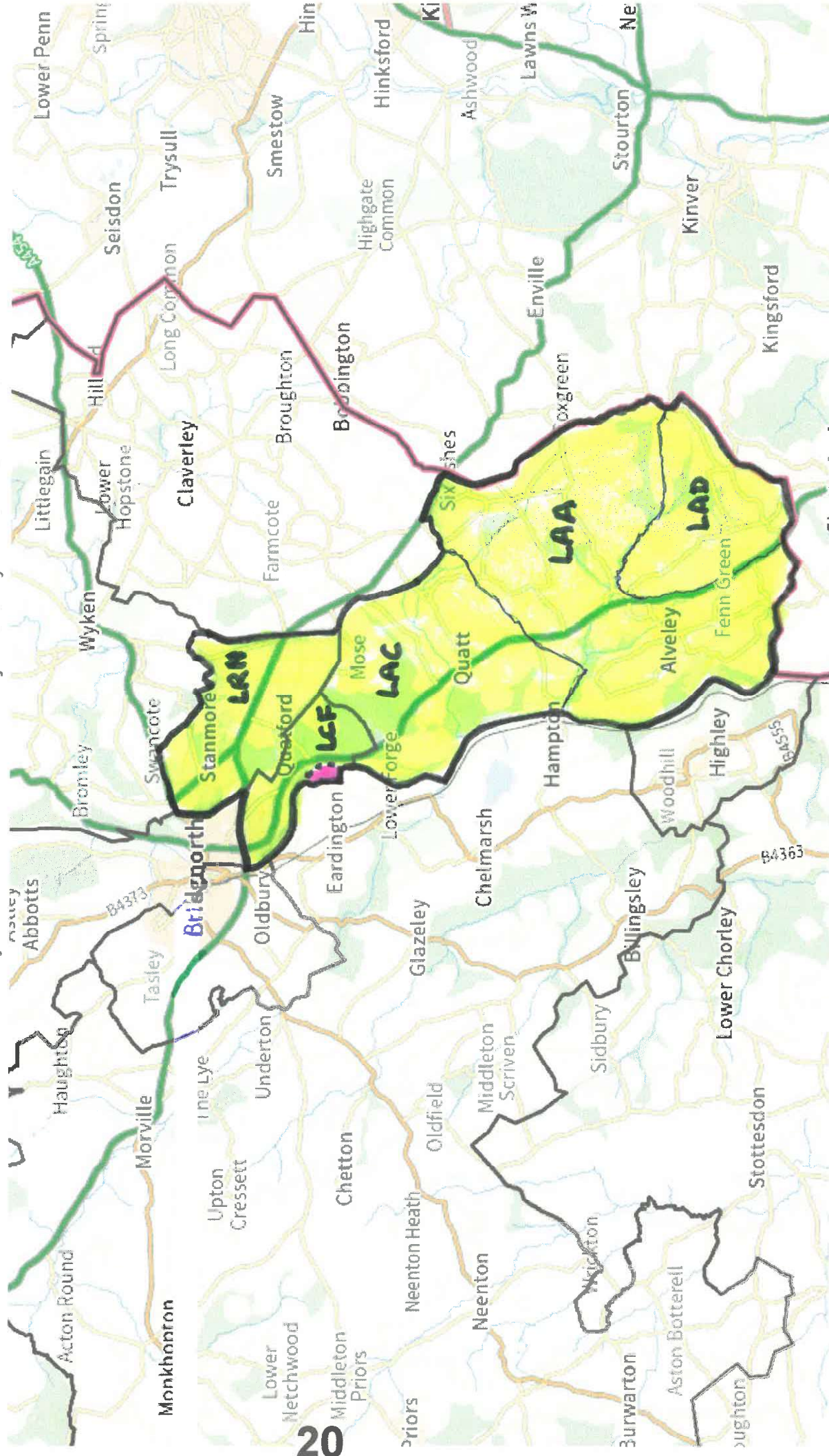


BRIDGNORTH RURAL ELECTION MAPS **Electors: 3,048 (-9.5%) and 3,376 (-6.1%)**

CLICK INSIDE A BOUNDARY FOR MORE INFO

Unitary Authorities

Unitary Authorities — Unitary Authority Electoral Divisions

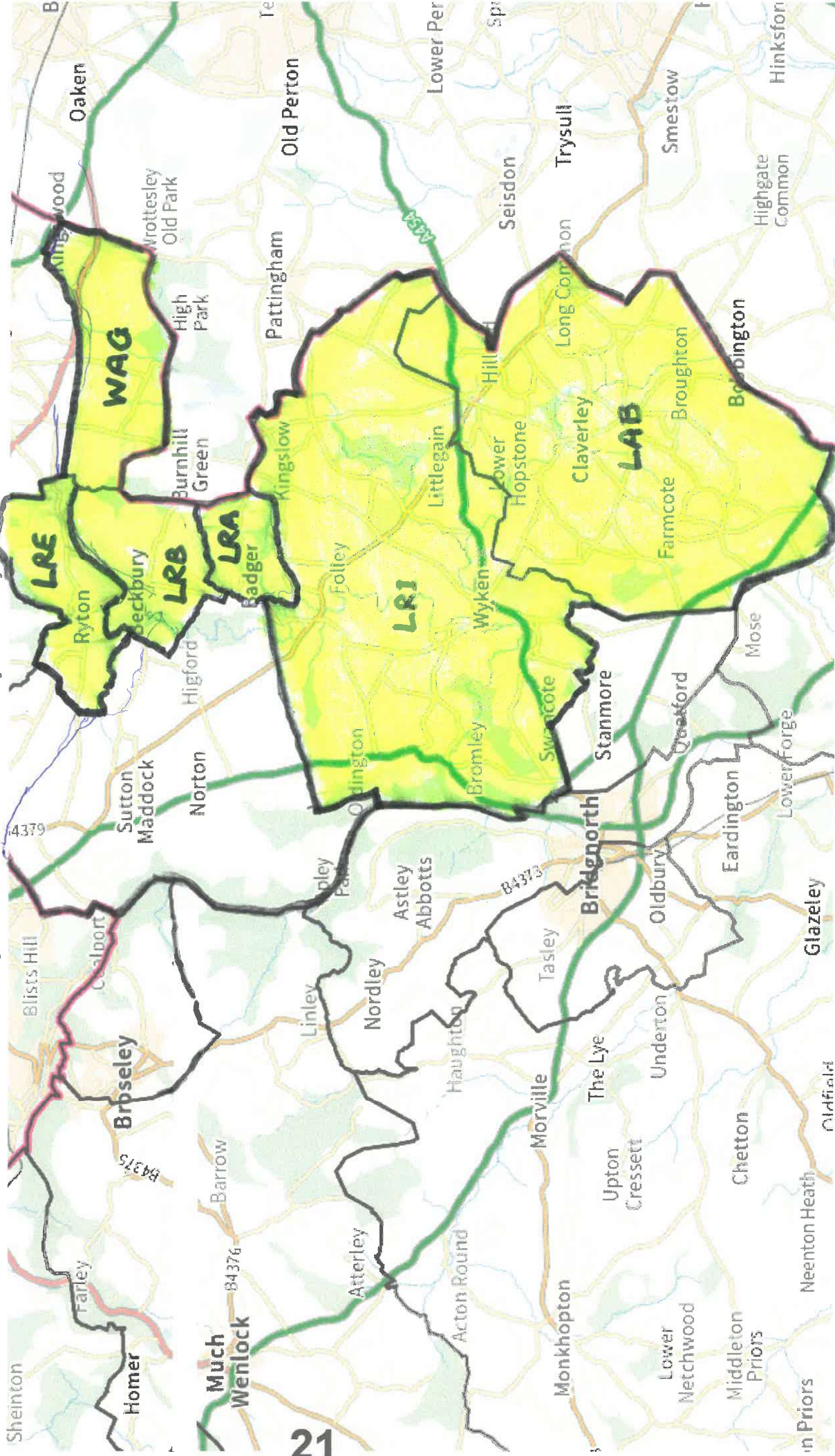




Claverley & Worfield ELECTION MAPS Electors: 3,640 (+8.0%) and 3,699 (+2.9%)

CLICK INSIDE A BOUNDARY FOR MORE INFO

Unitary Authorities — Unitary Authority Electoral Divisions



Transfer from Shifnal Manor Ward to Shifnal Idsall Ward

Aston Dale	12
Aston Road	41
Aston Street	22
Bluebell Way	71
Bluegate	15
Bradford Street	10
Cheapside	4
Greenfields	74
Grosvenor Gardens	48
Innage Road	30
Shrewsbury Road	22
Springhill	138
Victoria Road	88
Weaver Grove	78
West Way	93
Total:	746

Note: To compensate for the change in the north of Idsall Ward, a similar number of electors need to be added from the north of Manor Ward to create a new division of Shifnal Central. The map area is between Innage Road and Lamledge Lane north of the railway line, and fits well with Idsall to the north.

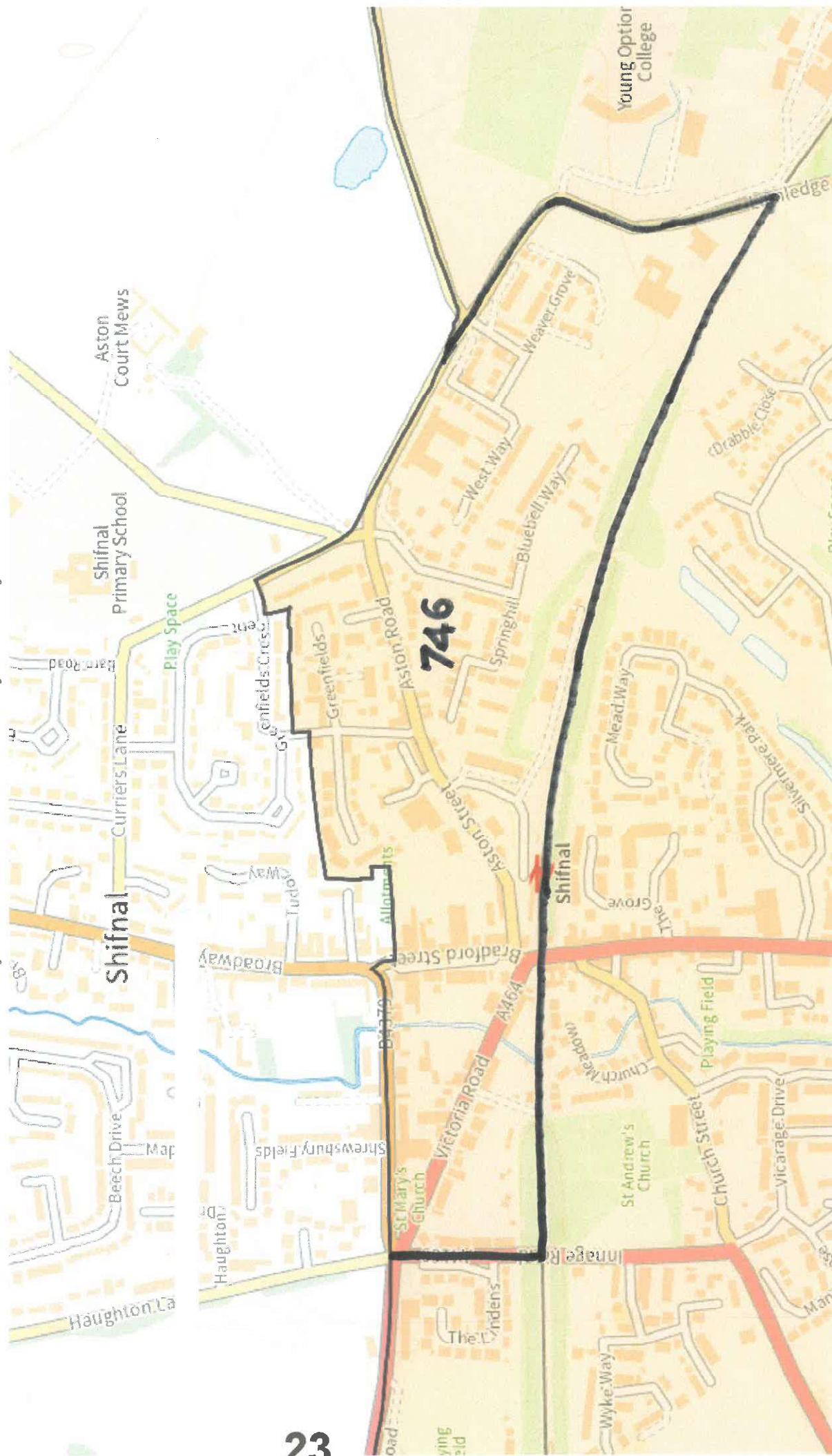
Shifnal Central		2022	2028
WBB	Shifnal TC (most of Idsall Ward)	2,613	2,618
WCR	Shifnal TC (part of Manor Ward)	746	746
Total:		3,359 (-0.3%)	3,364 (-6.4%)



ELECTION MAPS

SHIFNAL SOUTH AND COSFORD ED

Unitary Authorities — Unitary Authority Electoral Divisions



Retention of northern part of Idsall Ward in Shifnal N & Sheriffhales

Alder Road	97
Brass Street	50
Edge Avenue	41
Elm Close	18
Garland Place	21
Juniper Way	83
Larch Grove	30
Lovell Close	28
Poplar Street	134
Rowan Drive	11
Trent Way	32
Turley Grove	25
Watts Drive (most)	178
Total:	748

Note: The new developments in the north of Idsall Ward circle round the Admirals estate in the Shifnal Rural PD (WBC), (except for the anomaly of Lovell Close off Drayton Road). The map leaves a more logical boundary.

Shifnal North & Sheriffhales		2022	2028
WBA	Sheriffhales Parish Council	592	597
WBB	Shifnal Town Council (Idsall part)	748	748
WBC	Shifnal Town Council (Rural Ward)	747	746
WCP	Boscobel (from Shifnal S & Cosford)	11	11
WCQ	Donington PC (from above)	1,044	1,044
WCS	Tong Parish Council (from above)	211	212
Total:		3,353 (-0.5%)	3,358 (-6.6%)



ELECTION MAPS

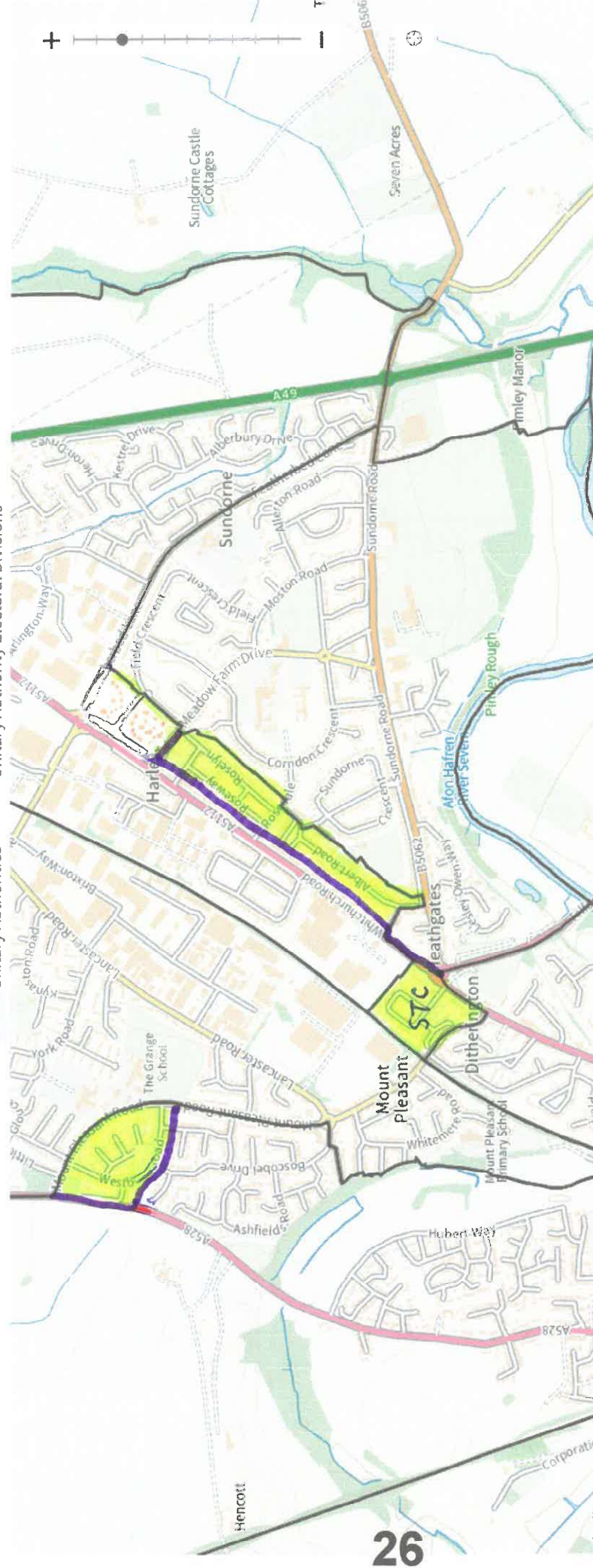
SHIFNAL SOUTH AND COSFORD ED

Unitary Authorities Unitary Authority Electoral Divisions



ELECTION MAPS

CLICK INSIDE A BOUNDARY FOR MORE INFO
 — Unitary Authorities — Unitary Authority Electoral Divisions



26

Adjustment to the 4 Shrewsbury Divisions north of the River Sever

Bagley has +13% now and +9% in 2028; which might be acceptable. Harlescott is -1% now and -5% by 2028 which is in range. To reduce the Bagley total, the Westbury Road area (coloured yellow on the map) adjacent to the Grange Schools could be moved from Bagley to Harlescott.. The electorate of these 7 roads is 384 and leaves Bagley with 3,425 (+2%) now and 3,517 (- 2%) by 2028. Harlescott would have 3,720 (+10%) now and 3,796 (+5%) in 2028. There isn't an isolated smaller area to achieve a better balance.

Sundorne is declining from - 7% now to -17% in 2028. The proposed adjustment is to move a residential strip SE of Whitchurch Rd from Bagley to Sundorne (Albert Road to Harlescott Close) with 530 electors in exchange for the STC polling district with 202 electors. The 328 difference would give Sundorne 3,589 (+6.5%) and 3,439 (- 4.3%), leaving Battlefield with 3,143 (- 6.7%) and 3,356 (- 6.6%).

Contains Ordnance Survey data © Crown copyright and database right 2022

Contains Royal Mail data © Royal Mail copyright and database right 2022

Contains National Statistics data © Crown copyright and database right 2022

<https://www.ordnancesurvey.co.uk/election-maps/gb/>

Shrewsbury Electoral Figures

2022

2028

Shrewsbury south of the River Severn is a mixed bag, with some divisions not needing any change, others needing a small contribution and one (Radbrook) with levels over 30% needing to distribute some 900 electors to adjacent areas.

Starting with Abbey, its two northern neighbours, Underdale and Monkmoor both need some assistance, with predictions of -16% and -13% by 2028. This proposal suggests adding part of polling district SAB in the north-west of the division, shown in yellow on the map, with 359 electors to Underdale, and the triangle north of Dark Lane and Belvidere Road with 165 electors to Monkmoor:

Underdale (with 359 electors from SAB)	3,476 (+3.2%)	3,369 (-6.3%)
---	---------------	---------------

Monkmoor (with 165 electors from SAA)	3,383 (+0.4%)	3,304 (-8.1%)
--	---------------	---------------

Abbey which was well within limits with +1% and -4% is now 524 electors short. But part of polling district SDD coloured in yellow on the map, from Sutton & Reabrook north of Pemberton Way, has 603 electors and joining this to Abbey has two advantages. Abbey gains 79 electors from the difference, and the electorate is reduced to 'manageable' proportions in the triple member division.

Abbey (plus the difference of 79 electors)	3,485 (+3.4%)	3,531 (-1.8%)
---	---------------	---------------

Bayston Hill, Column & Sutton (less 603)	9,855 (-2.5%)	11,814 (+9.5%)
---	---------------	----------------

That keeps them both in range and gives an average of 3,285 and 3,938 for 3 single divisions, which might need a split of Bayston Hill to even up the three. Bayston Hill Parish will not take kindly to a split, but a starting point is to move the 510 electors to the east of Lyth Hill Road and the A49 Hereford Road to the two remaining divisions in Column & Sutton. This leaves the SDA polling district with 1,010 to add to the complete SDB with 2,575, totalling 3585 (+6.4%). This would leave an average of 3,135 (-6.9%) for the other two using the 510. The Sutton & Reabrook SDD & SDE less the 603 to Abbey add up to 3,122 (-7.3%). It has been very difficult to get the electoral data needed to do the analysis.

Radbrook has over 30% on both figures and needs to lose ~900 electors, but none of the adjacent divisions could handle all that without exceeding the 10% limit. So the distribution has had to go 3 ways: the Six Acres estate to Meole with 259; the Ridgebourne Road estate north-east of the brook to Porthill with 194; and part of the Crowmeole Lane area north of the brook to Copthorne with 419. These are highlighted in yellow on the map and give a total of 872 electors.

Radbrook (less the 872 for the 3 below)	3,565 (+5.8%)	3,907 (+8.7%)
--	---------------	---------------

Meole (with 259 from the Six Acres estate)	3,634 (+7.9%)	3,664 (+1.9%)
---	---------------	---------------

Porthill (with 194 from Ridgebourne Road)	3,526 (+4.7%)	3,408 (- 5.2%)
--	---------------	----------------

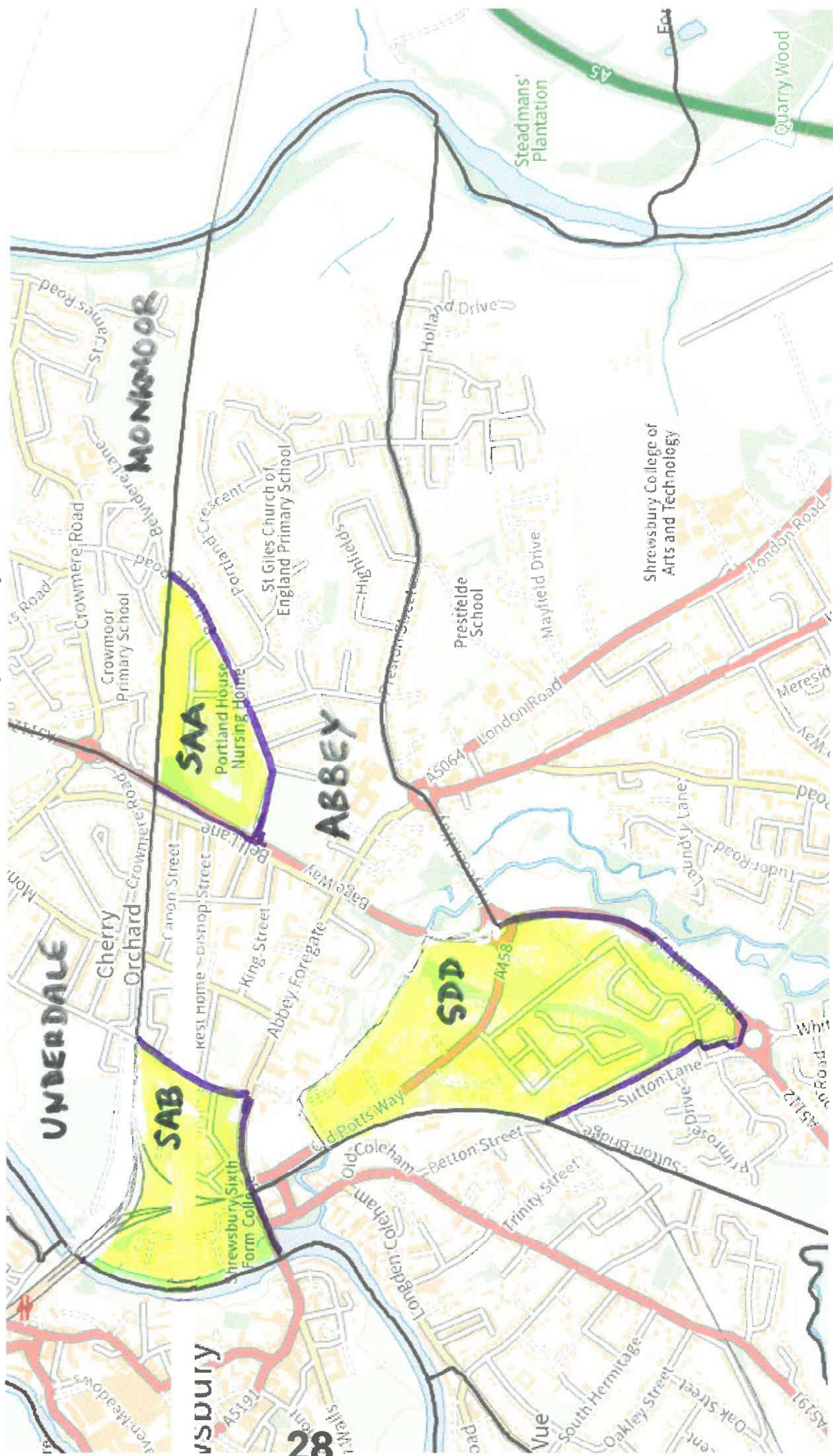
Copthorne (with 419 electors from the NE)	3,635 (+7.9%)	3,643 (+1.3%)
--	---------------	---------------



ELECTION MAPS

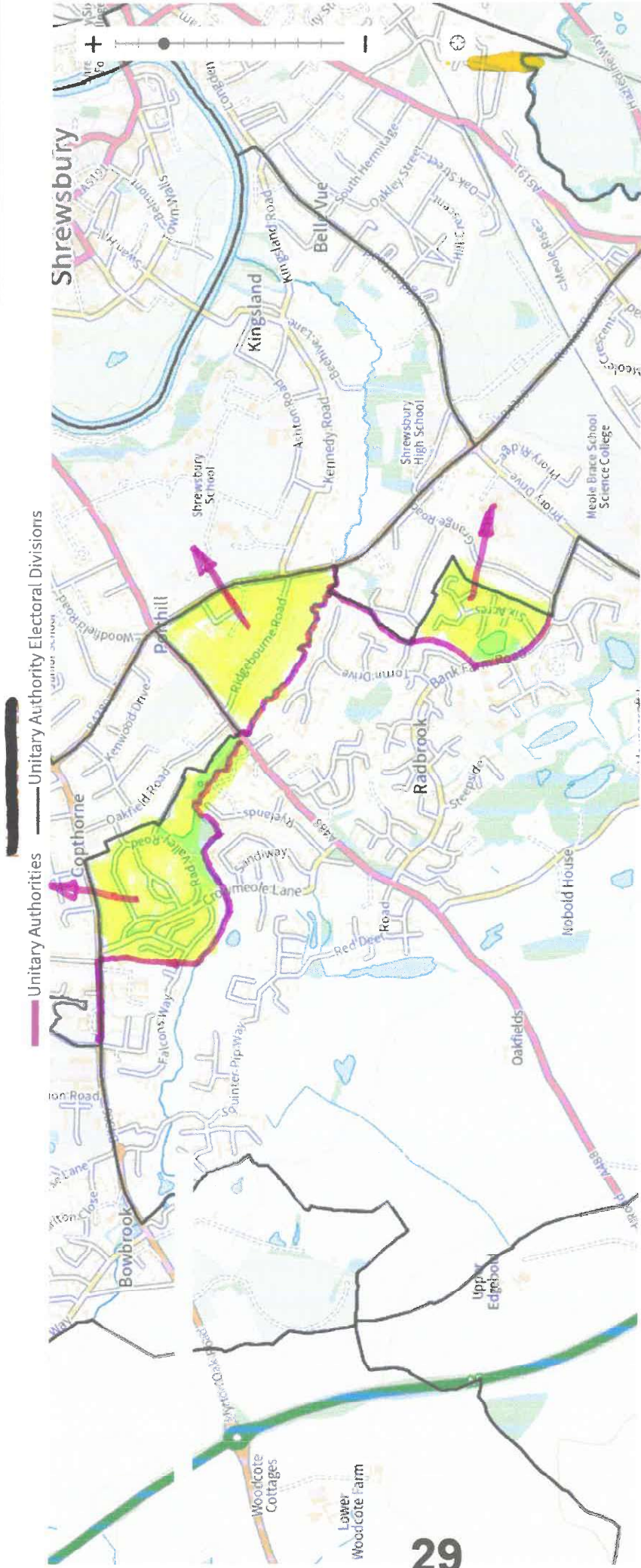
CLICK INSIDE A BOUNDARY FOR MORE INFO

Unitary Authorities Unitary Authority Electoral Divisions





ELECTION MAPS



Distribution of surplus electors from the Radbrook division three ways:

Radbrook	(less the 872 for the 3 below)	3,565 (+5.8%)	3,907 (+8.7%)
Meole	(with 259 from the Six Acres estate)	3,634 (+7.9%)	3,664 (+1.9%)
Porthill	(with 194 from Ridgebourne Road)	3,526 (+4.7%)	3,408 (- 5.2%)
Copthorne	(with 419 electors from the NE)	3,635 (+7.9%)	3,643 (+1.3%)

Market Drayton Electoral figures		2022		2028	
Market Drayton	(3 councillors continuing)	10,807	(+6.9%)	11,508	(+6.7%)
NEA	Market Drayton Town Council (East Ward)	1,127		1,289	
NEB	Market Drayton Town Council (East Ward)	1,092		1,106	
NEC	Norton in Hales Parish Council (Betton Ward)	143		143	
NED	Norton in Hales Parish Council (N in H Ward)	419		440	
NEE	Woore Parish Council	1,124		1,169	
NFA	Market Drayton Town Council (North Ward)	1,680		1,683	
NFB	Market Drayton Town Council (North Ward)	2,208		2,629	
NFC	Market Drayton Town Council (North Ward)	674		674	
NFD	Market Drayton Town Council (South Ward)	1,331		1,350	
NFE	Market Drayton Town Council (South Ward)	1,009		1,025	

From the above, it can be seen that 3 separate divisions can be created that would be within range. Market Drayton East is currently +16% and +15% later. The map shows how these figures can be reduced by transferring 270 electors in the central area to a new Market Drayton South division. As near as can be defined, these are Frogmore Road (part) 24; Burgage Close 7; The Burgage 67; Dairy Close 31; Cross Street 18; Stafford Street (part) 31; Great Hales Street 85; Tern Rise 7. A few more may be in the south of that area.

Market Drayton East electors then total: 3,635 (+7.9%) 3,877 (+7.8%)

Instead of West 1&2, the two separate divisions would be called Market Drayton North, and Market Drayton South to correspond with the polling district names now. The large difference in electors between these 2 means that a) the NFC North Ward should change to South Ward, but that alone would not be enough, even with the 270 electors from East. Due to the large rise in electors predicted for NFB, the southern part from Victoria Road along Longslow Road and Manor Gardens should also be transferred to NFE Ward. This area coloured yellow on the map has ~450 electors to balance up the 2.

Market Drayton North electors then total: 3,438 (+2.0%) 3,862 (+7.4%)

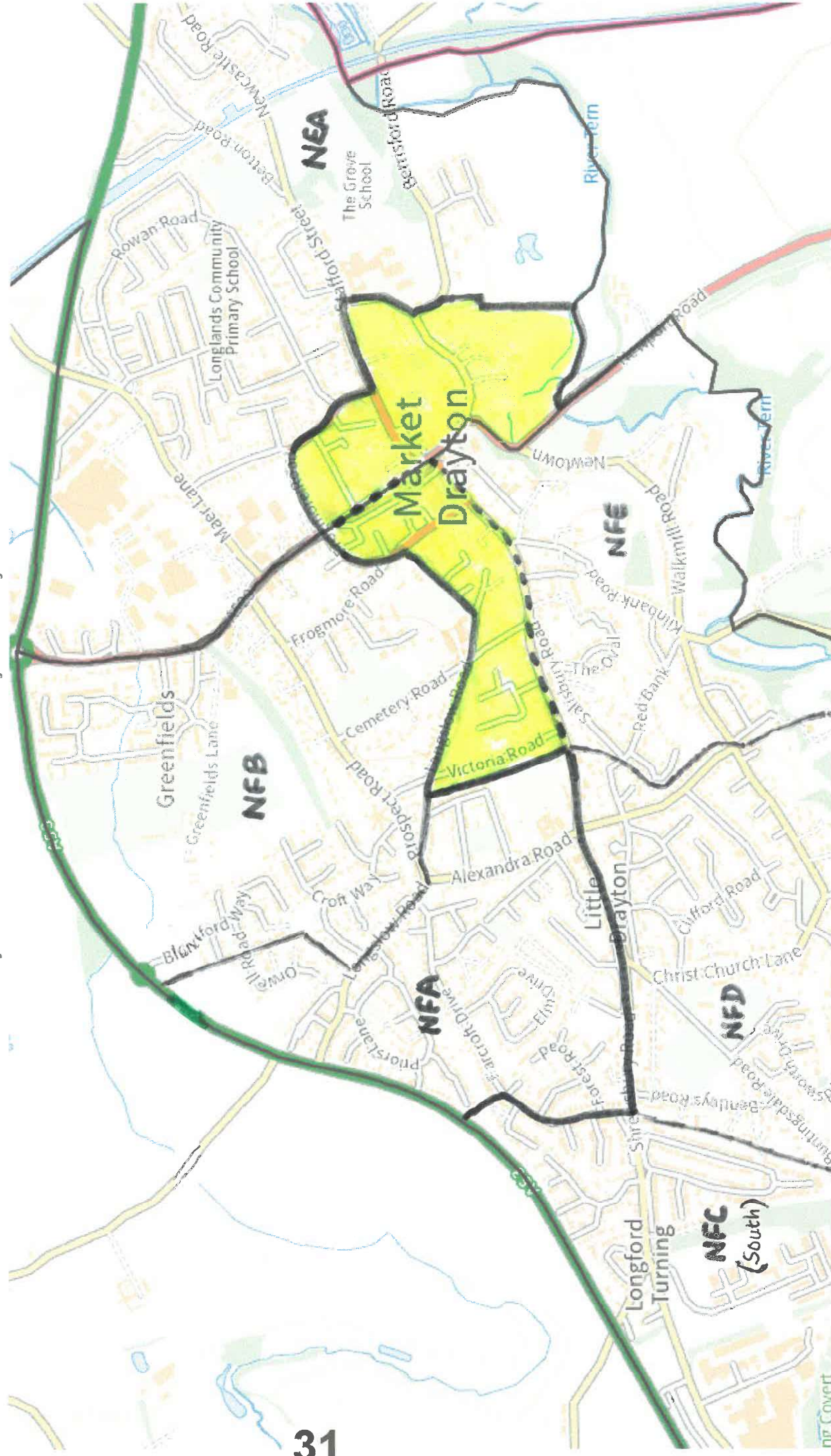
Market Drayton South electors then total: 3,734 (+10.8%) 3,769 (+4.8%)



ELECTION MAPS

CLICK INSIDE A BOUNDARY FOR MORE INFO

Unitary Authorities — Unitary Authority Electoral Divisions



Whitchurch Electoral Figures		2022	2028
Whitchurch	(3 councillors continuing)	9,279 (-8.2%)	10,546 (-2.2%)

This suggests that Whitchurch can create 3 divisions in range. However, the neighbouring Prees division is predicted to be at +24% by 2028, so has to make a reduction now. The geographical and logical solution would be to add the eastern polling district of Adderley (NJA) to the other NE parishes as part of Market Drayton East. This is already too high, and would prevent Market Drayton creating 3 divisions within range by adjusting its internal boundaries. The only alternative is to lose Ightfield Parish Council (NJB) to Whitchurch, which can create 3 divisions in range. Losing Adderley would have resulted in Prees having +8.7% by 2028, but losing Ightfield takes it just over the limit with +10.8%. But there is no other possibility which helps Whitchurch without breaking up the Prees PC.

Adding the Ightfield Parish Council (NJB) from Prees to Whitchurch South takes it to +19.8% by 2028 but allows it to transfer surplus electors to the two Whitchurch North divisions. Ightfield PC adds 420 now to the total above, and 472 to the 2028 total above.

For the 3 divisions the combined total now is		9,699 (-4.0%)	11,019 (+2.17%)
NJB	Ightfield Parish Council	420	472
NRA	Whitchurch Town Council (North Ward)	1,380	1,393
NRB	Whitchurch Town Council (North Ward)	1,379	1,760
NRC	Whitchurch Town Council (West Ward)	1,602	1,768
NRD	Whitchurch Town Council (West Ward)	1,700	1,790
NSA	Whitchurch Town Council (South Ward)	944	1,091
NSB	Whitchurch Town Council (South Ward)	985	1,276
NSC	Whitchurch Rural Parish Council (Ash Ward)	611	631
NSD	Whitchurch Rural P Council (Tilstock Ward)	678	838
Whitchurch South (NSA to NSD +NJB) is now		3,638 (+8.0%)	4,308 (+19.8%)

On the map coloured yellow is the proposed area either side of Station Road to transfer to the revised Whitchurch North. This keeps the estate north of Station Road together, and the boundary should move to the railway line from Black Park Road. Between the stream south of Bridgewater Street and Station Road is another compact residential area. The two together provide 519 electors which reduces Whitchurch South after adding Ightfield.

Whitchurch South (after the removal) would be	3,119 (- 7.4%)	3,789 (+5.4%)
Whitchurch North (after the addition) would be	3,278 (- 2.7%)	3,672 (+2.1%)
Whitchurch West (remaining as it is) would be	3,302 (- 2.0%)	3,558 (- 1.0%)

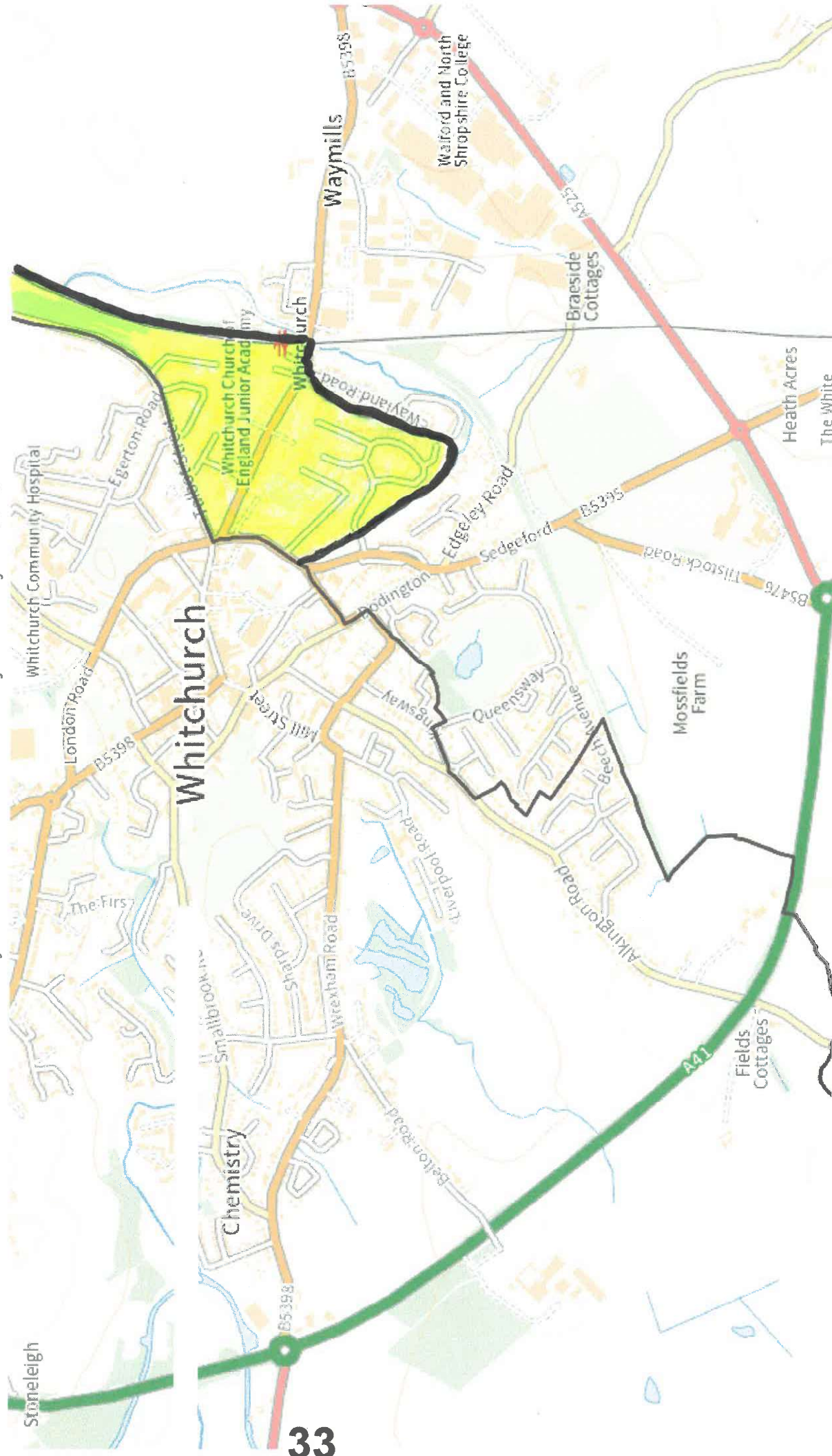
The totals for the 3 divisions add up to the combined figure above and the average %s too. No further adjustment is needed, and all 3 would be in range and close to the county average in 2028. It has the added advantage of leaving Prees with less than 1% over 10%.



ELECTION MAPS

CLICK INSIDE A BOUNDARY FOR MORE INFO

Unitary Authorities — Unitary Authority Electoral Divisions



33

Oswestry Electoral Figures

2022

2028

Oswestry currently has 3 divisions and 4 councillors, with two of them in the East division. The intention is to even up the electors and create 4 separate divisions of roughly the same size. The figures supplied now are as follows:

Oswestry East (2)	6,974 (+3.5%)	3,770 (+4.9%)
Oswestry South	3,356 (- 0.4%)	3,600 (+0.1%)
Oswestry West	2,884 (-14.4%)	2,908 (-19%)

It is clear that Oswestry South is on the county average, and does not need any change, but that the surplus in Oswestry East can boost the electorate in Oswestry West. On the map coloured yellow, it can be seen that the polling district NGC provides the ideal addition. The East divisions would now follow the railway line south of the Gobowen Road, making an easily recognisable and clear boundary between them. This addition would bring West in range:

Oswestry West (with NGC electors)	3,499 (+3.9%)	3,523 (- 2.0%)
--	---------------	----------------

Splitting Oswestry East using the remaining polling districts gives the northern section (NGA + NGB) a large majority of 3,843 and 4,031, and the southern section (NGD) with 2,517 and 2,900 looking very like the original Oswestry West division. Adding the totals together gives 6,360 and 6,931 for 2 divisions with an average of 3,180 (- 5.6%) and 3,465 (-3.6%). To achieve this balance, part of NGA polling district (Cabin Lane Ward) will need to transfer to NGD.

The proposed area is between Cabin Lane and Middleton Road terminating just short of Broadlands Way. This is almost a self-contained area with Aston Way, Longueville Drive and Smales Rise, and fits well with the residential area to the south of Middleton Road. It also happens to have 624 electors, very similar to the NGC polling district that met the need of Oswestry West. In terms of names, it might seem appropriate to call the two separate divisions Oswestry North East and Oswestry South East. It might be more logical to call Oswestry West Oswestry North. That is effectively its position with NGC.

Oswestry North East (with the NGA loss)	3,219 (- 4.4%)	3,407 (- 5.2%)
--	----------------	----------------

Oswestry South East (with the NGA gain)	3,141 (- 6.8%)	3,524 (- 2.0%)
--	----------------	----------------

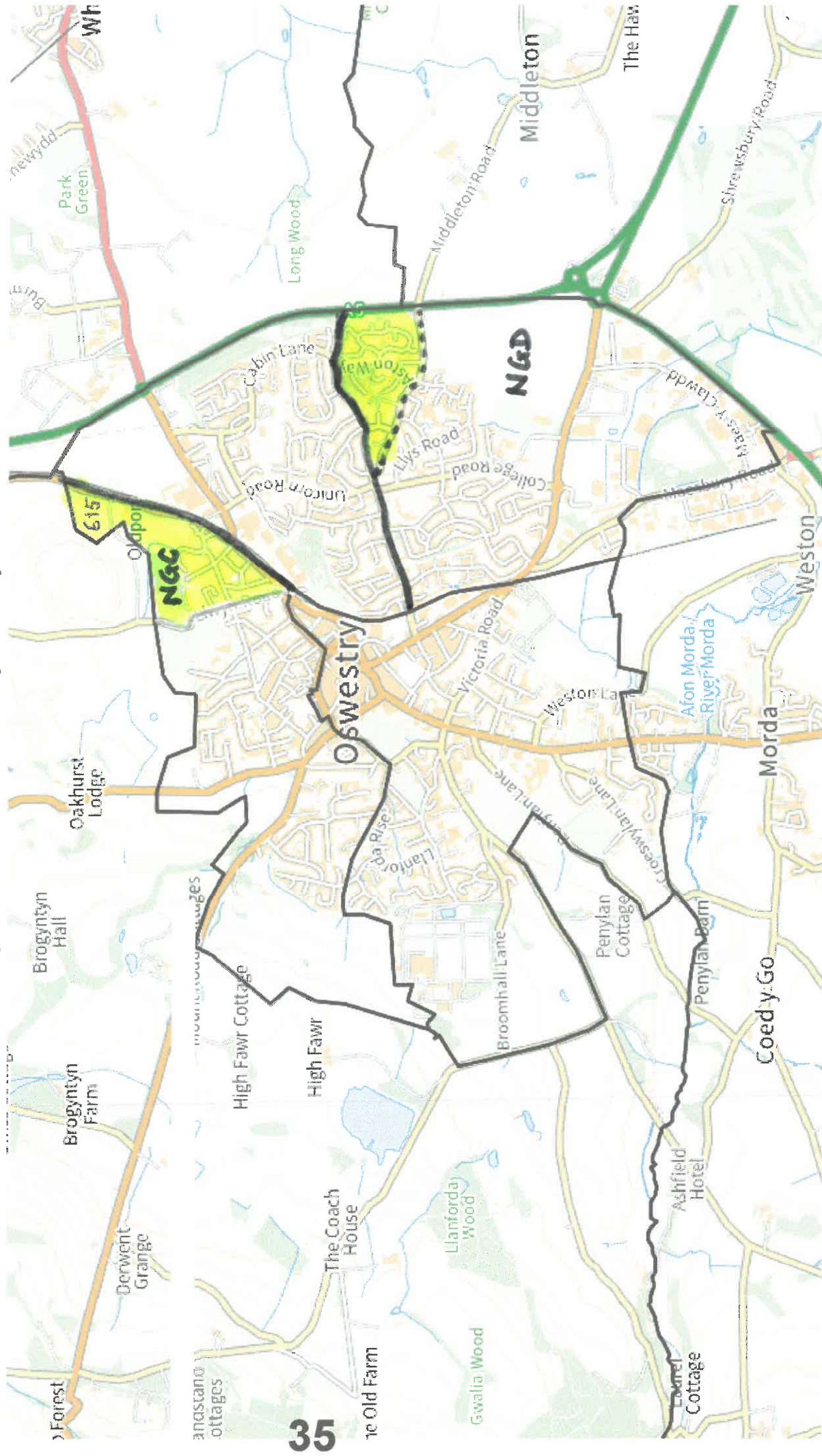
The total electorate for Oswestry is 13,214 (- 2.0%) now and 14,047 (- 2.3%) in 2028 for the 4 divisions, and it can be seen that the revisions should satisfy the requirement for 4 separate divisions, all well within the +/- 10% range.



ELECTION MAPS

CLICK INSIDE A BOUNDARY FOR MORE INFO

Unitary Authorities — Unitary Authority Electoral Divisions



Submission Postscript: Clarification for the Shifnal area

Shifnal as an area runs in a north-south direction, and it would be a mistake to create east and west divisions that divide the town in an inappropriate way.

The intention was that the 746 electors transferred from the north of Manor Ward would become part of a revised Idsall Ward, and the 748 electors from the north of Idsall Ward to Shifnal North would become part of a revised and extended Shifnal Rural Ward.

The revised Shifnal Idsall would then become a new Shifnal Central (a more meaningful name between Shifnal North & Shifnal South); with only 2 electors different from when Shifnal Idsall was all part of Shifnal North.

Shifnal Manor would remain smaller by 746 electors, but Shifnal South would regain 650 electors from the 3 parishes to the south, leaving it with a difference of one elector between 2022 and 2028.

It was more appropriate to add the two parishes in the 'Cosford' bit (Tong, and Donington with Boscobel) to Shifnal North, with Sheriffhales and other mainly rural areas, rather than its present location with the largely urban Shifnal South with which it has little commonality (other than the Stanton Road!)

As in the submission, Albrighton division would be complete with WAE & WAF.

30 January 2023

Submission Addendum: Boundary Adjustment in Bridgnorth

Further to Friday's original submission, it is proposed that the boundary between polling districts LCB and LCC of the current East Ward is moved to the centre of the High Street, making a much clearer boundary down the B4373 than at present. It also evens up the electorates between LCB and LCC although they would be in different divisions in the future.

The main area to the west of the High Street includes Whitburn Street, St Mary's Street and Listley Street and a few others totalling 257 electors. These would be added on to the proposed Castle Ward (to keep a familiar name) and deducted from the East Ward. The new electorates for these two with the revised boundary are shown below for 2022 & 2028:

Bridgnorth Castle & Astley Abbots	3,721 (+10.4%) & 3,726 (+3.6%)
Bridgnorth East	3,585 (+ 6.4%) & 3,666 (+2.0%)

The change has the advantage of widening the narrow 'neck' of Salop Street between the northern and southern parts of the Castle division, and reducing the current high electorate (+14%) of the East division to less than half that value. In the Reference data (page 14) the LCB electorate would increase to 919, and the LCC figure would reduce to 940. Section 20 and 21 on page 3, and the map on page 19 would need amending.

30 January 2023