

Map referred to in the **Harborough (Electoral Changes) Order 2017**
Sheet 1 of 1

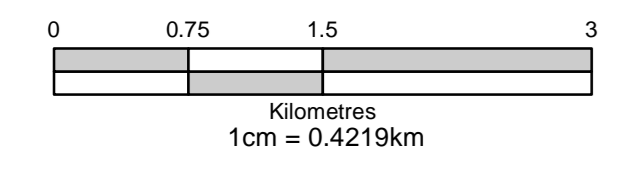
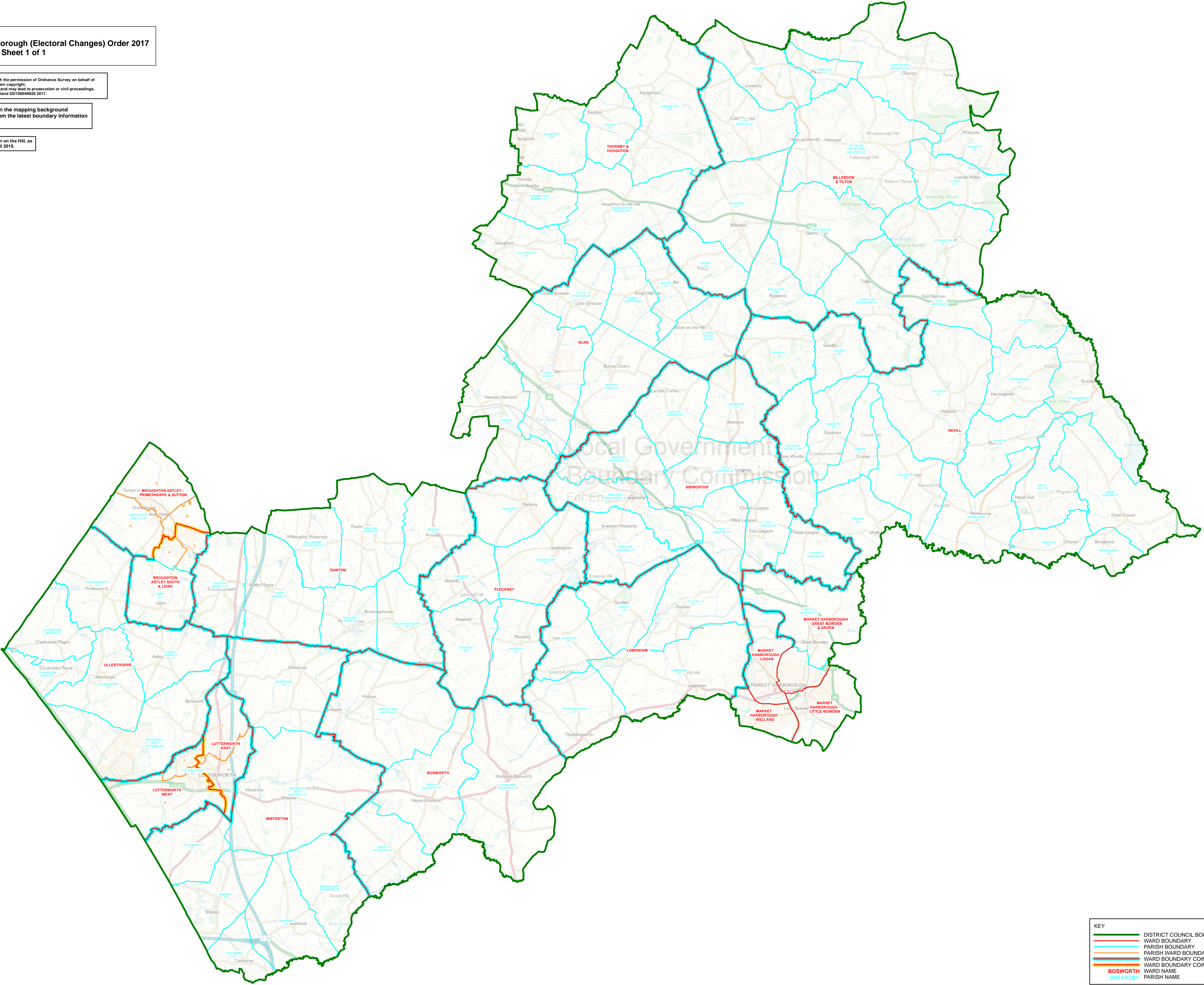
This map is based upon Ordnance Survey material with the permission of Ordnance Survey on behalf of the Controller of Her Majesty's Stationery Office © Crown copyright.
Unauthorised reproduction infringes Crown copyright and may lead to prosecution or civil proceedings.
The Local Government Boundary Commission for England GD10064926 2017.

Boundary alignment and names shown on the mapping background may not be up to date. They may differ from the latest boundary information applied as part of this review.

The parish boundaries of Hungarton and Houghton on the Hill, as shown on this map, are not operative until 1st April 2019.

KEY TO PARISH WARDS

- BROUGHTON ASTLEY CP**
- A ASTLEY
- B BROUGHTON NORTH
- C BROUGHTON SOUTH
- D PRIMETHORPE
- E SUTTON
- LUTTERWORTH CP**
- F BROOKFIELD
- G ORCHARD
- H SPRINGS
- I SWIFT



KEY	
	DISTRICT COUNCIL BOUNDARY
	WARD BOUNDARY
	PARISH BOUNDARY
	PARISH WARD BOUNDARY
	WARD BOUNDARY COINCIDENT WITH PARISH BOUNDARY
	WARD BOUNDARY COINCIDENT WITH PARISH WARD BOUNDARY
	BOSWORTH WARD NAME
	SHEARSBY PARISH NAME