

THE LOCAL GOVERNMENT BOUNDARY COMMISSION FOR ENGLAND

ELECTORAL REVIEW OF BROXBOURNE

Final recommendations for ward boundaries in the Borough of Broxbourne October 2011
Sheet 1 of 3

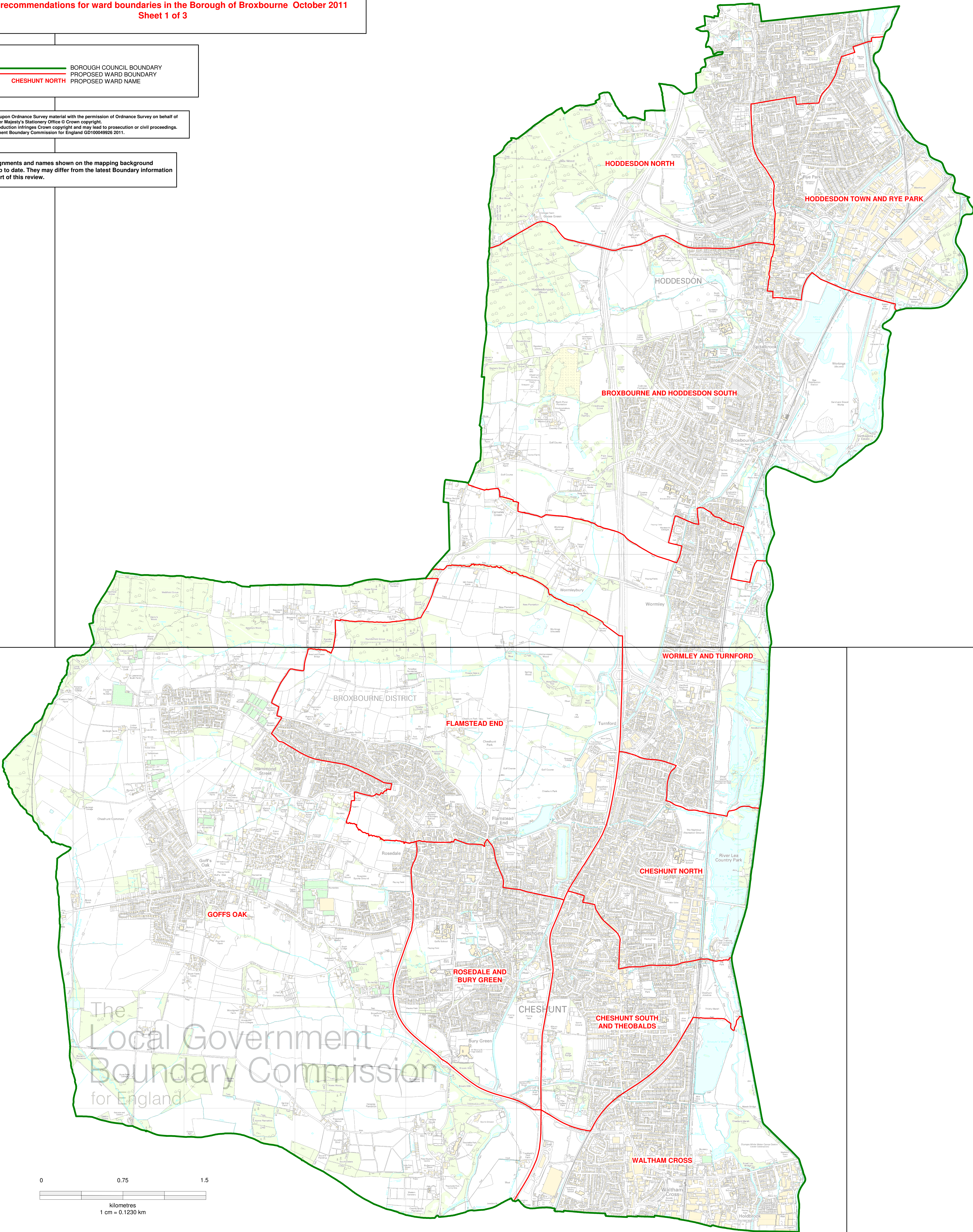
SEE SHEET 2, MAP 2

KEY

- BOROUGH COUNCIL BOUNDARY
- PROPOSED WARD BOUNDARY
- CHESHUNT NORTH
- PROPOSED WARD NAME

This map is based upon Ordnance Survey material with the permission of Ordnance Survey on behalf of the Controller of Her Majesty's Stationery Office © Crown copyright.
Unauthorised reproduction infringes Crown copyright and may lead to prosecution or civil proceedings.
The Local Government Boundary Commission for England GD10048952 2011.

Boundary alignments and names shown on the mapping background may not be up to date. They may differ from the latest Boundary information applied as part of this review.



SEE SHEET 3, MAP 3