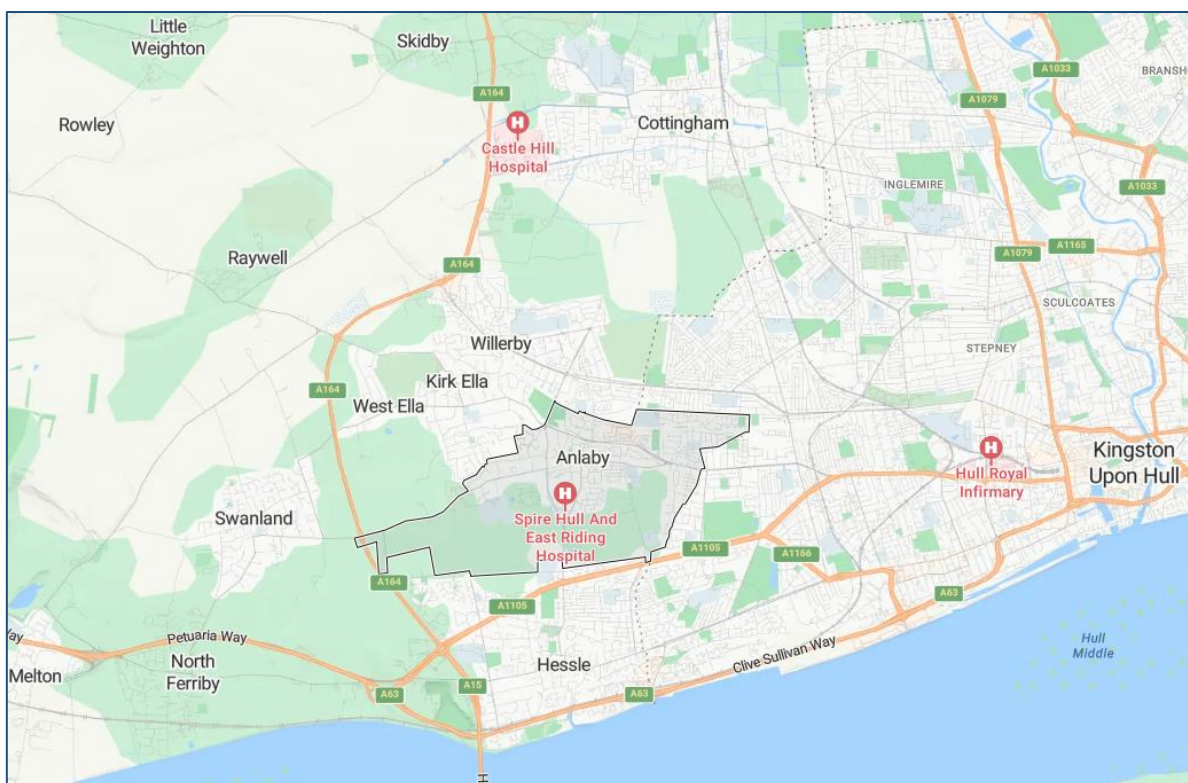


## **Anlaby with Anlaby Common Parish Profile**

### **Introduction**

This document has been prepared by the Anlaby with Anlaby Common Parish Council so as to advise the 2024 Local Government Boundary Commission for England's review of Wards in the East Riding of Yorkshire. It comprises background information and, at the end, some conclusions to assist the Commission in this process.

Anlaby and Anlaby Common are villages that form part of the western outer suburbs of Kingston upon Hull, in the East Riding of Yorkshire, England. They form the civil parish of Anlaby with Anlaby Common and the Ward of Tranby.



### **Overview**

Anlaby with Anlaby Common Parish (Tranby Ward) is situated to the west of Kingston upon Hull's city boundary and covers an area of 514.885 hectares (1,272 acres). It consists of the villages of Anlaby and Anlaby Common, it also encompasses the remaining part of the land area known as Anlaby Common, an area of primarily enclosed agricultural land, being historic common land, to the south west of Anlaby village.

The parish borders Willerby and Kirk Ella to the north, Swanland to the west, Hessle to the south, and areas of Kingston upon Hull to the east and north east. The eastern part of the parish is low lying at 5 metres (16 ft) above sea level, but rises to 50 metres (160 ft) at the western fringe, approaching the foothills of the Yorkshire Wolds.

The parish includes the former country houses of Tranby Croft (now Tranby, East Yorkshire a Private School) and Anlaby House (now converted into apartments).

According to the 2021 UK census, Anlaby with Anlaby Common parish had a population of 10,336, up from 9,794 in 2011.

It does not include the Hull suburb of Anlaby Park which is inside the boundaries of Kingston upon Hull.

## **History**

Anlaby was founded in 867 by 'Anlaf', who was of Danish/Norse origin, after he agreed with the ealdorman of Beverley that he could settle there with his men and take local wives. It is first formally recorded in the Domesday Book as "Umlouebi" or "Unlouebi", a habitation within the manor of North Ferriby which was of 19 persons including a priest. The name is thought to derive from the old Norse personal name Anlaf linked with a 'farmstead', i.e. "Anlaf's village"

After a road connected the village to Hull in the early 14th century the area began to thrive, although by the end of the 1300s there were riots over the new canals built to supply water from the rural areas to Hull.

During the English Civil War Anlaby was used as a base by Royalist forces, and fighting took place at Anlaby during the relief of the first siege of Hull (1642), and during the second siege (1643).

The major landmark building in the area, excluding churches (detailed later), are The Old Hall, Anlaby House, Tranby Croft and latterly Haltemprice Leisure Centre.

Anlaby Hall was constructed around 1680, and extended in the early 18th century, with modifications in the 19th century. Anlaby House was built in the late 18th century, and extended in the 19th. Tranby Croft's construction followed in the late 19<sup>th</sup> century. By the 1850s Anlaby still contained only a few dwellings in addition to Anlaby Hall and Anlaby House and was set in an entirely rural and parkland environment.

Anlaby Hall, now known as the Old Hall in Pryme Street, is located close to the centre of Anlaby village and is still a private residence. It is a Grade II listed building and was originally occupied by the Yorkshire gentry family Legard.

Anlaby House is a former Georgian country house which has since been converted to luxury apartments. It is a grade II listed building constructed of yellow brick with stone dressing and a slate roof with the main range built to three storeys, with a 5-bay frontage. Anlaby House was originally built in 1790 for Hull merchant John Boyes and sold shortly afterwards to William Voase in 1818. He left it to his niece Fanny, who had married Thomas Ringrose, on condition they adopted the surname Voase.

The Voase family continued to occupy the estate until 1936, when it became council premises on the formation of Haltemprice Urban District Council. During the Second World War the house was used as a store and depot for air-raid precautions.

From 1974 to 1999 it was the offices of the Chief Executive of Beverley Borough Council. The successive East Riding of Yorkshire Council sold the property in 1999 as 'surplus to requirements', it was then converted into luxury apartments in 2004.

Tranby Croft is a Victorian county house, built in 1874 by Hull shipowner Arthur Wilson (1836–1909). It is a large Grade II listed building and associated estate and is now the co-educational independent day school - Tranby, East Yorkshire. The house is built in white brick with ashlar dressing to three storeys with a 9-bay frontage.

Hull High School for Girls moved to Tranby Croft after the Second World War and Hull Grammar School moved to Tranby Croft from its Cottingham site in 2005. The two schools merged into Hull Collegiate School, which in 2021 was renamed Tranby.

Springhead Pumping Station is on the north eastern edge of Anlaby. This is a Grade 2 listed building with striking architecture built by Thomas Dale in 1863 and considerably extended in 1876. Recently it became a Waterworks Museum pumping 25 million litres of water daily to a third of the city of Hull.

Anlaby's local train station was closed in the 1950s, but the roads were significantly improved and the village quickly became contiguous with the suburbs of Hull due to suburban housing developments which began in the 1930 and continued at scale until the 1970s. This development extended Anlaby so that it joined Willerby and Kirk Ella.

In 1973 the Haltemprice Sports Centre was constructed north-west of the original village centre. Subsequently the pattern of development had remained fundamentally unchanged until recently. Anlaby, of late and in common with all other suburban areas in the UK on the urban fringe, has seen a considerable increase in new build in-fill development, this mostly comprising of houses of 2,3 & 4 bedrooms. More areas have been earmarked in the Local Plan so this trend is expected to continue.

## **Services**

Haltemprice Leisure Centre provides a variety of sports facilities and is the busiest centre of its kind in East Yorkshire. It was built on King George's Playing Field and officially opened in 1974 by Sir Roger Bannister, the first athlete to run a four-minute mile.

There is a 6 lane, 25 metre regional standard swimming pool and a learner pool. The gym has recently been fully refurbished with a 90-station health and fitness suite, alongside two glass backed squash courts and one standard squash court. There are two multi activity sports halls and a floodlit outdoor multi-sport pitch suitable for 5-a-side football, tennis, netball and basketball. The adjacent parkland includes cricket, football and rugby pitches.

New conference facilities have been developed recently which can accommodate up to 40 people. The Vibe Café offers on-site catering daily. The centre also includes Anlaby Library and the Anlaby GP Surgery.

Haltemprice Skatepark is located next to the Leisure Centre and is perfect for skaters from novices to advanced and has all the equipment any skater needs with half-pipes and ramps of various depths. Children have plenty of space to practice and socialise with friends.

The Secret Village in Anlaby is a place for children to role-play, from firefighters to vets, and learn to play and create using their imaginations. The centre offers 10 play areas to get lost in and a café for refreshments for the adults.

Anlaby Surgery is a General Medical Practice with a modern surgery at the Haltemprice Leisure Centre. It is staffed by two GP's, one who is part time, and they are supported by a team of receptionists, supporting staff, managers and practice nursing staff.

Willerby and Swanland Surgery, is located in the Willand Primary Care Centre, Lowfield Road, Anlaby. A recently completed £3.5 million ultra-modern facility with 15 consulting rooms housing over 30 staff providing a whole range of services supporting 4 GP's, nursing staff, administrative and management support.

Spire Hull and East Riding Hospital is a state-of-the-art private hospital also on Lowfield Road. It offers fast access to diagnostic tests and scans and expert consultants who can provide personalised treatments and high-quality accommodation and aftercare. The facilities include:

- 34 private rooms, each with en-suite facilities, TV and WiFi.
- 4 operating theatres, all with laminar flow.
- An on-site pharmacy which is open Monday to Friday, 9am to 5pm and Saturday 9am to 1pm.

Anlaby with Anlaby Common has many places of worship allied to a number of dominations. Anlaby village has the splendid St Peter's Church location on Wilson Street. This is allied with St Mark's Community Church on Hull Road in Anlaby Common. Close by, in Anlaby Common also on Hull Road, is Anlaby Park Methodists Church. Centrally located on Springfield Way is the modern Church of Jesus Christ of Latter-day Saints. Anlaby is also home, since 1994, to the Hull Hebrew Congress, a synagogue in Pryme Street.

As regards the provision of services, particularly from public bodies, the boundary between the East Riding of Yorkshire and Hull City Council provides some real challenges, especially around efficiency and effectiveness. The Boundary has not kept pace with development in the last 50 years resulting in considerable confusion at times over responsibility, especially when local residents' problems need to be resolved. This area is worth of further detailed examination by the Commission.

### **Policing and Crime**

Policing is provided by Humberside Police and the parish is part of the Beverley and Haltemprice Neighbourhood Policing Team's area. Locally officers are based at Kirk Ella Police Station located in our Neighbouring Kirk Ella parish. The Parish has a dedicated Neighbourhood Beat Officer with support from a Police Community Support Officer.

Crime rates are low in the parish with the main issues being acquisitive crime, shed/garage burglaries for examples. Due to the retail offering shop theft is also a focus for the local policing team but this is a function of people travelling into the parish to use the retail facilities, particularly the Anlaby Retail Park. The area, due to its demographic, is also a potential target for Hanoi Burglaries (where a vehicle is stolen as part of a burglary) but recent initiatives (2024) have had an impact and there has been a considerable reduction in these. Finally, Anti-Social behaviour can be an issue in the Parish, mainly centred around the extended facilities associated with Haltemprice Leisure Centre. The centre employs specific security staff to ensure the environment in the centre is safe and appealing. Recent surveys with local residents, undertaken by the Parish Council, indicate that this issue has reduced recently and is not as widespread, or as regular, as is perceived.

### **Schools and Education**

Anlaby with Anlaby Common has a number of pre-schools including Building Bricks Pre-school, Busy Little Hands Pre-School, Little Stars, Teeny Tots Nursery, Tiptoes, Anlaby Park Pre-School and Springboard Nursery.

Anlaby Primary School is centrally located and has a catchment including Anlaby Village and much of Anlaby Common. Anlaby Acre Heads Primary School is located in the North East of the Parish and provides schooling for children from the remainder of Anlaby Common, the Maplewood Avenue area, Anlaby Park and parts of west Hull. Children to the west of the Parish, of primary school age, mainly attend Kirk Ella St Andrews Primary School located in our neighbouring parish. Additionally, many local children in the north of the Parish attend Springhead Primary School which is on the boundary of Anlaby and Willerby.

St Thomas More Voluntary Catholic Academy is located in the southeast of the Parish. It is part of the St Cuthbert's Roman Catholic Academy Trust within the Diocese of Middlesbrough and has a primary pupil catchment comprising West Hull (St Joseph; Corpus Christi and St Wilfrid churches) and Our Lady of Lourdes, Hessle.

The Hub School, located in the northeast of the Parish, provides specialist support for students with social, emotional and mental health needs servicing students from a wide catchment area.

For Secondary School and further education provision the Parish relies on schools and colleges located in neighbouring parishes.

The high-profile independent school, Tranby, East Yorkshire, which attracts students from the whole Humber region is located in the west of the Parish at Tranby Croft.

### **Seniors Provision and Support**

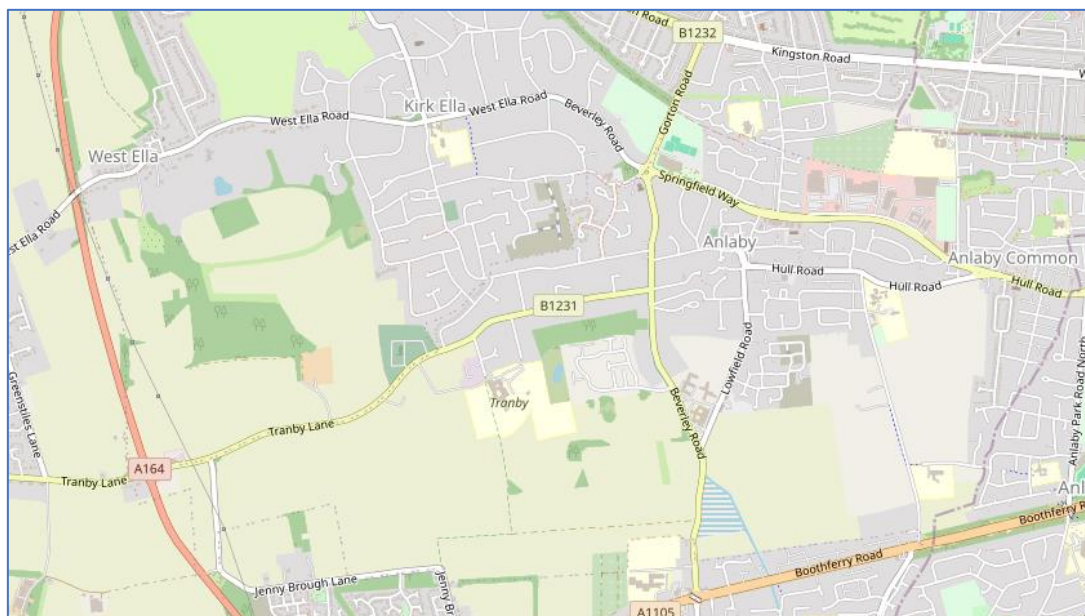
Anlaby with Anlaby Common has considerable provision for those who are retired or of senior years. St Marys Care Centre and associated Lodge Care Home are located in the south of the

Parish. St. Mary's Care Centre is a purpose-built care home supporting people with long-term nursing care needs and accommodates 60 people who have access to communal lounges, a cinema room, a hairdressing salon, a physiotherapy room, a library and music room. St Mary's Lodge Care Home supports residents to lead active lives and aims to be a lifestyle choice rather than just a care home with 25 single rooms.

In addition, sheltered housing facilities are provided by East Riding of Yorkshire council at Moat Hill, near the centre of Anlaby village, which has 45 apartments. This site is currently undergoing redevelopment. Also, near the centre of Anlaby is the Kirk House development providing 79 age exclusive apartments with communal facilities and support. Other similar facilities are provided at The Ridings, close to St Mary's Care Centre to the south of the Parish, which has 50 apartments and Albion Court in Anlaby village centre, with 53 apartments.

### **Transport**

From a road transport perspective Anlaby with Anlaby Common is bordered by two of west Hulls primary arterial routes. To the south is the A1105 Boothferry Road, with has direct links to the A63/M62 and A15 Humber Bridge. To the north is the B1232 Kingston/Willerby Road. To the west boundary is the busy A164 which carry's traffic north into the East Riding from the Humber Bridge, A63/M62 and the ports in Hull.



Within the Parish the B1321 Hull Road, Anlaby feeds the majority of traffic from Hulls Anlaby Road. This services the local regional Anlaby Retail Park shopping centre on Springfield Way and the shops in Anlaby village centre and Anlaby Common. It is also a primary route to the Haltemprice Leisure Centre.

Running north/south through the centre of the Parish is the B1232 Beverley Road, which carries much of the traffic traversing the lower west Hull villages between Willerby and Hessle and feeding into Kingston Road via Gorton Road. This route also services the Spire Hospital on Lowfield Road and Haltemprice Leisure Centre.

The B1231 continues west from Beverley Road along Tranby Lane and crosses the A164. This route carries much of the traffic accessing the independent school Tranby, East Yorkshire at Tranby Croft.

At times traffic is heavy within the Parish along all the above-named routes, with queues forming at junctions and roundabouts at peak and school run times.

Anlaby is well placed in relation to access to the wider national road network with excellent access to the A164, for both northward and southward routes towards York and Lincoln. There is also easy access to the A63 for onward connections to the M62/M18 and major motorways including the M1 and A1.

Bus travellers are serviced by primarily East Yorkshire Motor Services routes. The 154 service links Springfield Way and Anlaby Common with Hull, Cottingham and Hulls two major Hospitals. Additionally, the 152 service links Anlaby with Hull and the 153 service continues this link through the west of the Parish and onward to Swanland. The 150 service links North Ferriby and Swanland with the west of the Parish, linking in the Health Centre and Hospital on Lowfield Road and continuing on through to Hessle. The 25 service runs north/south through the west of the parish carrying passengers southward to Hessle and northward to Beverley and ultimately Hornsea. Passenger journey numbers for 2023-24 are detailed in the below table.

<b>PJS Rank</b>	<b>ROUTE</b>	<b>SERVICE</b>	<b>PJS 23 / 24</b>
<b>1</b>	<b>Cottingham Castle Hill Hospital - Hull</b>	154	<b>829,186</b>
<b>6</b>	<b>Swanland/Anlaby - Hull</b>	152/3	<b>337,024</b>
<b>10</b>	<b>Hornsea - Beverley - Hessle Square</b>	25	<b>224,269</b>

It can be seen that patronage along the whole route of these services is substantial, with the 154 being the most used service in the East Riding, and the 152/3 service being 6th. That said, ridership in the parish for the 152/3 and 25 service is poor warranting support from the Local Authority to maintain services even though they have been reduced in frequency and number in the last few years.

The nearest train station is Hessle, which has services to York, Doncaster and Hull. Cottingham Train Station is 11-minute away and has a service to London Kings Cross and services to Beverley, Sheffield, Scarborough, and Bridlington. Mainline services are available from the Hull Paragon Interchange, with journeys to London King's Cross taking just 2hrs 45 mins

Further afield Humberside Airport is less than 30 minutes away over the Humber Bridge, with Leeds Bradford Airport accessible via the M62.

In less than 30 minutes you can also travel from Hull on a P&O Ferries services to Rotterdam.



### **Industry and Enterprise**

Anlaby's industrial and manufacturing footprint has reduced somewhat in recent years, being replaced by retail and service centre-oriented uses. Some industrial employers are still located on Springfield Way. This area has recently benefited from the construction of a number of small industrial units at the rear of the Anlaby Retail Park.

In addition, just to the north of Anlaby village centre there is Fraser Way Industrial Estate which is occupied by a good number of thriving small to medium sized companies in a diverse range of businesses.

To the west of the parish there is much open farmland and a number of active farms mainly focused on arable and crop farming.

### **Retail and Entertainment**

Anlaby with Anlaby common has an abundance of retail offerings, with the Anlaby Retail Park being a shopping 'destination' locally, attracting people from both the wider East Riding and Hull.

Anlaby Village has a good range of shops with retail occupancy very high. It has a good mix of both staple retail outlets, including a supermarket, a butchers, bakers, green grocers, post office and pharmacy, alongside more varied retail offerings. It has free parking and is very busy most days during retailing hours. The village provides a local alternative and wider range of shops that neighbouring parishes residents use extensively and offers a viable shopping alternative to nearby Cottingham and Hessle.

Anlaby Common also has a considerable retail frontage, mainly on Hull Road. The retail offering is more localised including an extended hours convenience store and take-away and café outlets.

Anlaby Retail Park on Springfield Way is a huge retailing magnet locally, with a national recognised superstore, other key quality national retailers and a considerable quantity of free on-site parking. It has done a lot to raise the profile of Anlaby in the wider West Hull and East Riding community but does bring with it some challenges around the additional traffic.

Anlaby village has no public houses since the Red Lion, in the village centre, closed. This is symptomatic of the wider west Hull villages environment which has many quality eateries, hostelrys and bars. Therefore, the residents of the parish have an abundance of choices for dining out and meeting friend and family for a drink.

Anlaby Common has the Anlaby Park public house on Hull Road. This is a very well-established local pub with a vibrant and consistent cliental.

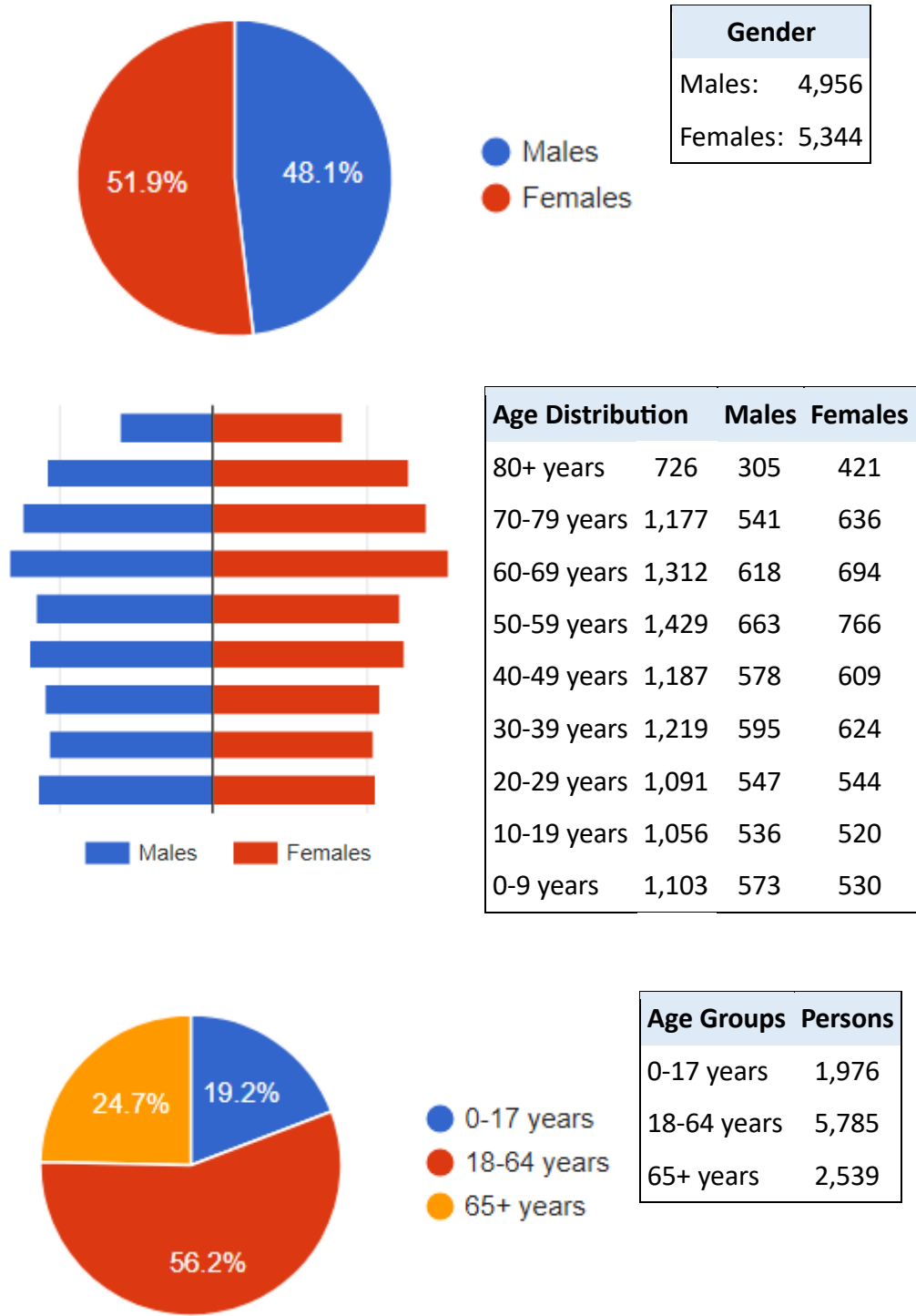
In addition, the Springhead Tavern, Anlaby is just outside the parish boundary on Wolfreton Lane which has a tradition of hosting well attended live music events.



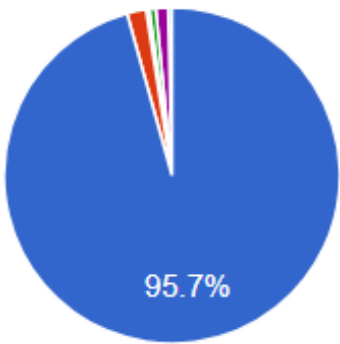
Anlaby with Anlaby Common has a number of fine and quality restaurants, cafes and eateries, with several of these located in Anlaby village centre. They are well frequented by people from the surrounding area and west Hull.

Demographics

Information about the population structure of Anlaby with Anlaby Common from the 2021 census:

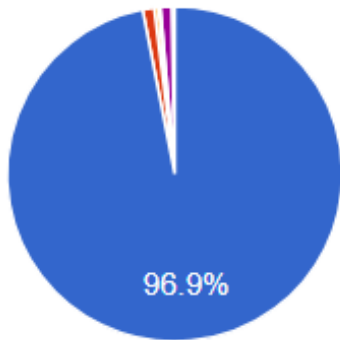


Anlaby with Anlaby Common Parish Council  
Anlaby with Anlaby Common Parish Profile



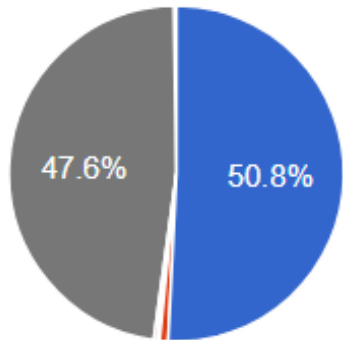
- UK
- EU
- Europe (other)
- Middle Ea...
- Africa
- Other cou...

Country of Birth	Persons
UK	9,856
EU	189
Europe (other)	33
Middle East & Asia	63
Africa	122
Other country	38



- White
- Asian
- Black
- Arab
- Mixed/  
multiple
- Other eth...

Ethnic Group	Persons
White	9,983
Asian	113
Black	41
Arab	22
Mixed/multiple	109
Other ethnic group	32



- Christian
- Muslim
- Hindu
- Other religion
- No religion
- Other

Religion	Persons
Christian	4,960
Muslim	79
Hindu	23
Sikh	8
Buddhist	13
Jewish	5
Other religion	33
No religion	4,645

## Anlaby with Anlaby Common Parish Council

### Anlaby with Anlaby Common Parish Profile

Since the introduction of Universal Credit, the statistics produced by the Department for Work & Pensions do not clearly identify unemployment levels at the local level. The Office of National Statistics publishes claimant counts of people receiving out of work benefits including legacy Jobseeker's Allowance and Universal Credit as a proportion of people over 16. These figures are usually updated once a month and are for Local Authority Districts and Unitary Authority Districts. The below are the figures of East Riding of Yorkshire.

Unemployment		
Area	Unemployed	Yearly Change
East Riding of Yorkshire	2.5%	-0.2%
Yorkshire and The Humber	4.2%	-0.3%
England	3.8%	-0.3%
UK	3.7%	-0.3%

Source: Office for National Statistics (ONS), March 2023

The 2021 census had data on 'economically active' people in Anlaby with Anlaby Common.

Economic Status	Proportion
In Employment	55.34%
In Part-Time Work	28.37%
Unemployed	3.75%

Health Status Statistics					
Area	VG	G	F	B	VB
Tranby	47.24%	34.66%	13.16%	3.95%	0.99%
East Riding of Yorkshire	44.87%	35.39%	14.37%	4.12%	1.26%
Yorkshire and The Humber	46.18%	34.31%	13.7%	4.49%	1.32%
England	48.49%	33.71%	12.65%	3.98%	1.17%

VG = Very Good, G = Good, F = Fair, B = Bad & VB = Very Bad

Owner Occupation	Owned	Rented
Tranby (Anlaby)	75.11%	24.89%
East Riding of Yorkshire	73.12%	26.88%
Yorkshire and The Humber	62.58%	37.42%
England	61.31%	38.69%

Anlaby with Anlaby Common has a significantly higher level of home ownership than the national average. This is indicative of an economically wealthy area.

Anlaby with Anlaby Common's owner occupation statistics compared to other local wards:

Owner Occupation		
Ward	Owned	Rented
Willerby and Kirk Ella	87.65%	12.35%
South Hunsley	84.01%	15.99%
Cottingham North	80.4%	19.6%
<b>Tranby (Anlaby)</b>	<b>75.11%</b>	<b>24.89%</b>
Cottingham South	72.56%	27.44%
Hessle	71.38%	28.62%

Education		
Level	Tranby	England
No Qualifications	17.57%	18.08%
Level 1 - GCSE grades D, E, F, or G & below	10.27%	9.69%
Level 2 - GCSE A*, A, B, C or O Level grades A, B or	13.92%	13.32%
Apprenticeship	8.02%	5.32%
Level 3 - A or AS qualification	18.83%	16.92%
Level 4 - HNC, Bachelor's Degree, Master's Degree or Phd	28.58%	33.92%

Occupations of the Residents	
Sector	Proportion
Professional Occupations	18.34%
Skilled Trades	13.17%
Associate Professional & Technical	12.68%
Managers, Directors & Senior Officials	11.62%
Administrative & Secretarial	10.43%
Caring, leisure & Other Services	9.77%
Elementary Occupations	8.95%
Process Plant & Machine Operatives	6.68%

Source: Office for National Statistics (30 June 2020)

Anlaby with Anlaby Common's population compared to other local wards :

Ward	Population
Hessle	15359
Willerby and Kirk Ella	13727
South Hunsley	10569
Tranby (Anlaby)	10336
Cottingham South	9643
Cottingham North	8047
East Riding of Yorkshire Total	343201

### **Administration**

Anlaby started as a "township" in Kirk Ella and Hessle parishes and was established as a civil parish within Sculcoates Rural District in 1894. This was resized to enable an enlarged Sculcoates Civil Parish in 1930 and abolished in 1935 when the area was absorbed by the newly-established Haltemprice Urban District. Anlaby remained a part of Haltemprice until 1974.

In 1974 most of what had been the East Riding of Yorkshire was joined with the northern part of Lincolnshire to become a new English county named Humberside, which was divided into non-metropolitan districts. The area west of Hull became part of initially Beverley Borough Council, which renamed in 1981 to the East Riding Borough of Beverley.

Further local government reorganisation resulted in Humberside County Council being abolished in 1996. The area north of the River Humber was separated into two "unitary authorities"- Kingston upon Hull covering the former City of Hull and its closest environs, and the less urban sections around the city, to the east, west and north, becoming The East Riding of Yorkshire.

To enable some measure of community government the East Riding of Yorkshire Council created parishes including the formation of the Anlaby and Anlaby Common Civil Parish. This is coterminous with the Tranby Ward.

### **Submission Conclusions**

#### **Anlaby – Fact Pack:**

- Anlaby is a village forming part of the western suburbs of Kingston upon Hull, in the East Riding of Yorkshire, England.
- It was historically a village and civil parish in the county of the East Riding of Yorkshire.
- The name 'Anlaby' is derived from the Old Norse personal name 'Anlaf' and 'by', which means farm.
- It is believed to have been founded by the Vikings in the 10th century.
- Anlaby is part of the Hull West and Hessle parliamentary constituency.
- The village is served by several bus routes linking it with Hull city centre, Hessle and the nearby town of Beverley.
- Anlaby village, with its free car park, contains a number of shops, including a supermarket, a bakery and several fast-food outlets.
- Anlaby also has a large retail park containing a superstore, supermarkets, national big name chain retailers and several coffee shops.
- The Primary School catchments covering the Parish and Ward. Anlaby Primary; Acre Heads, Anlaby; Springhead and St Thomas More all have a 'Good' Ofsted rating.
- There are several landmarks in Anlaby, including the Grade II listed Anlaby House, Tranby Croft and Springhead Pumping Station.
- Anlaby also has several recreational facilities, including a huge sport centre, a park, a cricket club, and a football club.

#### **Anlaby - Quirky Facts!:**

- In the Domesday Book, Anlaby was an ancient village, home to just 19 people.
- During the Queen's Diamond Jubilee in 2012, the entire village held a party in its centre and a fête at St Peter's Church.
- Hollywood actress Hannah John-Kamen grew up in Anlaby and attended Hull Collegiate School.
- In 1890 Tranby Croft was the scene of a baccarat cheating scandal which fascinated Victorian society because of the involvement of the then Prince of Wales - by that time King Edward VII.

It is clear that Anlaby with Anlaby Common has a distinct history and character which goes some way to defining it as a Parish, i.e. "a civil subdivisions, usually centred on a village or small town, that are distinct". It has a defined village centre and a homogeneous demographic mix with high owner occupancy, similar to its peer parishes nearby. It also has a strong mix of professional and trades people, with a higher-than-average representation of apprentice professional qualifications.

These are factors which make it a defined community, supported by the localised primary schools' provision and places of worship.

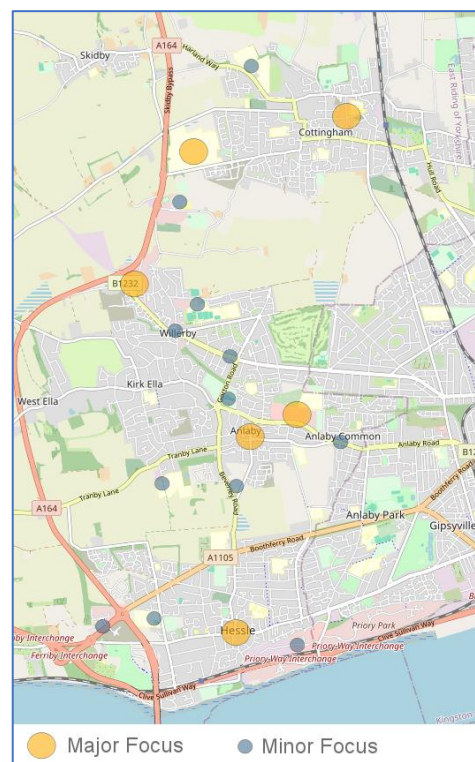
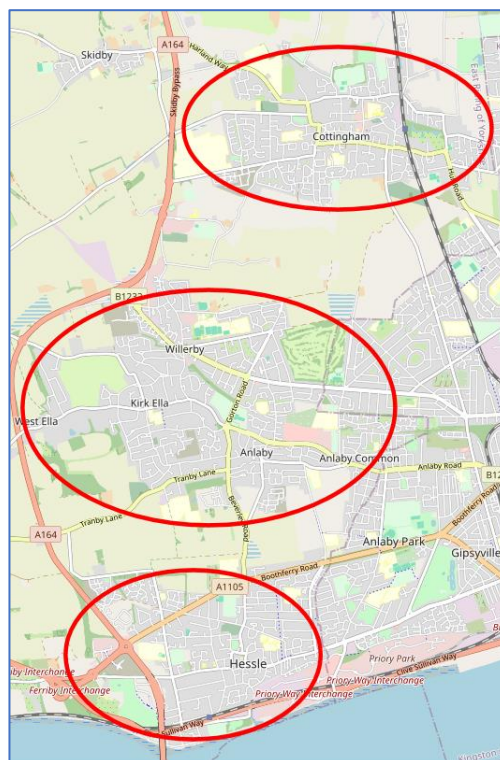
From a geographical perspective, and looking at the wider immediate landscape, it is clear to see that to the west of the city of Hull there are three distinct urban grouping, as shown on the map. These are centred on Cottingham in the North, Hessle in the South and Anlaby/Willerby/Kirk Ella. These communities map directly onto the primary road network in the city of Hull.

**CONGESTION:** Anlaby and Anlaby Common is at the main interface with the more densely populated west Hull. This produces some unique challenges around congestion and travel corridors as people travel into and out of the Parish to use the facilities at the Anlaby Retail Park, Anlaby village centre and Haltemprice Leisure Centres. These are local 'destination' locations with people from the wider local area travelling regularly to use them, mainly by car. This further supports the need for local community focused governance so that local residents' needs are taken account of and met.

From a local infrastructure and 'destinations' perspective the map on the right details those locations to which the people in our local communities, and our immediate neighbouring communities, will look to travel to. These locations include shopping, leisure, hospitals and major schools. Many of these are serviced by regular public transport, but the links between them from a public transport perspective are infrequent, if they exist at all. Therefore, the majority of these locations are accessed by using the car.

It can be seen that Anlaby with Anlaby Common has a good proportion of these 'destination' locations which creates the congestion challenges as detailed above.

**HISTORY:** Anlaby has several key grade II listed buildings, with key sites representing a country house building style which was commonplace across the local area but has now been lost in many cases due to suburban development. The local context for their continued use and maintenance needs to be safeguarded.

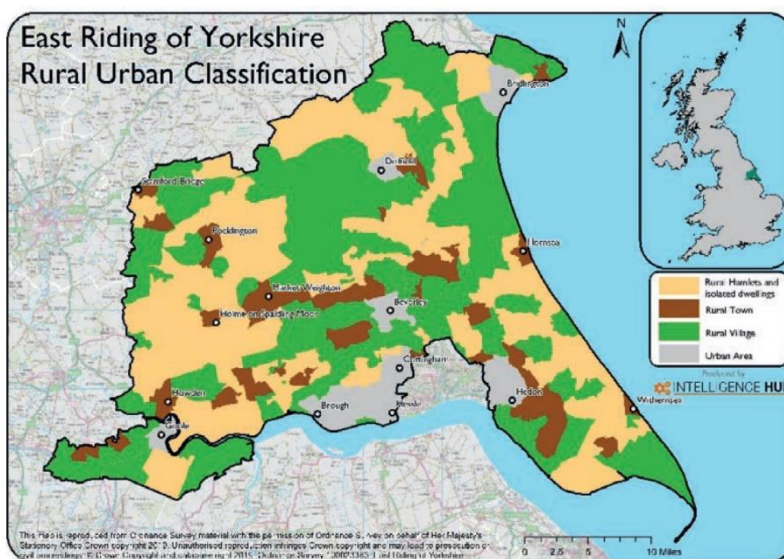




**DEVELOPMENT:** Anlaby and its closest peer parishes are at the urban rural boundary and as such there is considerable pressure to build housing. This is further fostered by the village, small town character of these areas, good schooling, ample leisure facilities and extensive quality shopping provision. The new Labour governments push to build more housing will heighten focus on areas such as Anlaby and Anlaby Common, as these have been the focus of extensive housing development in the recent past (60's & 70's). This again evidences the need for parish and local community focused government so that the very characteristics that make the location so desirable are maintained and if needed enhanced in line with the growth of population.

**INVESTMENT & FOCUS:** Additionally, there is a feeling among those on the current Parish Council, which we believe is shared by our neighbouring Parish Councils, that the communities in the greater Haltemprice area, which are part of the East Riding of Yorkshire Council, are often overlooked. Investment and focus seems to be directed to Beverley, Bridlington and Goole, the main 'towns' in the councils area.

If the populations of the villages immediate adjacent to west Hull are aggregated, over 57,000 people live in these areas, some 16.6% of the East Ridings total population. This compares with Beverley at 9.5%, Bridlington at 11.3% and Goole at 6.6%. If Brough, Elloughton and their surrounds are included in the west hull village figure it rises to over 67,000. Therefore nearly 20%, or a fifth, of the East Ridings population. There is a common consensus that these areas do not get a fifth of the East Riding Councils attention, probably due to the fragmented nature of provision. The gravity of the Haltemprice area is further evidenced by the map on the right. This is taken from the recently published East Riding of Yorkshire Council Bus Plan, with urban areas detailed in grey.



Localised community governance helps ensure such perceptions and possible imbalances are raised with local administrations and, if anything, a more coordinated and collaborative approach would help in this regard. The Parish Council would value any support the Local Government Boundary Commission could provide in this respect.

**NAMING AND INFORMATION PROVISION:** The work completed by the Parish Council to complete this submission has highlighted an issue of confusion around the naming of the ward and the associated parish, which are coterminous. The consensus from those spoken to, and involved in local government and governance, is that the naming convention creates confusion around the provision of information, services and responsibilities. If those in 'the system' recognise this confusion then the public, who are the recipients of information around such

things as crime statistics, government performance, service provision and where they actually live must be doubly confused. The Parish Council has no recommendations in this regard as it recognises some of the historical context to the current naming but it would welcome the commission's objective thoughts on how this issue could be resolved for the benefit of the local community so as to increase transparency and access around the provision of information, statistical comparators and trajectories.

**BOUNDARIES:** As detailed earlier in this report. The boundary, at the very local level, between the East Riding of Yorkshire and Hull City Council has not kept pace with development and creates confusion. Locations of note include Rokeby Park, Bernadette Avenue and associated streets, Trenton Avenue, Faversham Avenue, Hawkshead Green and Kendal Way. The Parish Council recognises that this issue is out of scope for this review but would ask that the Commission look to examine this in a future review. The main driver for such a review, from a Parish Council perspective, being to ensure both the effective and efficient provision of government services, from all agencies, along with an improvement in the demarcation of responsibilities. It is important to stress that the review needs to be very local in nature and at a property specific level.

From a wider demographic perspective, the information presented in the main body of this document does not detail any issues of local significance, with the information and statistics being broadly similar to other east riding parishes in west Hulls hinterland.

The Anlaby with Anlaby Common Parish Council believe that this profile document, prepared for the Local Government Boundary Commission for England, provides both the background information and reasoning for maintaining, if not enhancing through collaborative working, the current Parish boundaries and governance arrangements.

- END -

