

Worcestershire County Council

Response to “Communities” Consultation

Report to the Local Boundary Commission for England

Table of Contents

Executive Summary	2
Background.....	2
Council Profile.....	3
Approach and Methodology	4
Current Number of Electors per Division and Variance	5
Bromsgrove District.....	7
Malvern Hills District	14
Redditch District.....	20
Worcester City	24
Wychavon District	31
Wyre Forest District	41

Executive Summary

As part of the review of the number of Councillors, divisions and division names for Worcestershire County Council, the Local Government Boundary Commission for England (LGBCE) launched a consultation on “Communities” on 16th May 2023. This report contains proposals for electoral boundary arrangements which address the criteria set out by the LGBCE, namely,

- a) **Electoral equality** - that each Councillor represents a similar number of electors,
- b) **Convenient and effective local government** - to propose divisions that use clearly identifiable boundaries, have appropriate names, and make it as easy as possible for the Councillors to do their jobs, and
- c) **Community identity and interests** - reflect the communities local people live in.

When projecting the number of electorates in each division, analysis showed that in 2029 it was likely that 23 divisions would be above 10% variance (plus or minus) from the county average number. This would equate to 40% of divisions being over the acceptable tolerance set by the LGBCE.

The proposals made by Worcestershire County Council has reduced the number to 5.

Background

In the summer of 2022, the Local Government Boundary Commission for England (LGBCE) announced that it would be carrying out a review of the electoral boundaries of the County Council. The main purpose of the review is to improve electoral equality across the whole of the county. The County Council's electoral boundaries have not been reviewed since 2004.

The LGBCE provides tables summarising the electorate totals per division on their website: [Worcestershire | LGBCE](#). According to those tables, Worcestershire has 15 divisions (of 52 in total) which are currently plus or minus 10% variance from the local authority average number of electors per Councillor. This is above the threshold to trigger a review. The last review of Worcestershire's electoral arrangements resulted in minor revisions to division boundaries, and a reduction of 57 divisions to 52, but did not lead to any reduction in Councillor numbers.

The first stage of the current review looked at whether the number of County Councillors (57) should be changed. The council submitted a report to the LGBCE, compiled by officers having consulted with members, which recommended that the number of Councillors should remain at 57. This was supported by the LGBCE.

The LGBCE launched the next stage of the review on 16th May. This consultation asks local people and organisations to tell the LGBCE about their communities. This report contains proposals for electoral boundary arrangements which address the criteria set out by the LGBCE. The proposals have been compiled by council officers following consultation with all County Councillors.

Council Profile

Worcestershire is a county located in the heart of England towards the south west of the West Midlands area. The county borders Herefordshire, Shropshire, Staffordshire, the West Midlands Metropolitan Area, Warwickshire and Gloucestershire. Worcestershire has two main rivers running through it, the Severn and the Avon. To the west the county is bordered by the Malvern Hills, and the south is bordered by the Cotswolds. The northern part of the county is bordered by the West Midlands conurbation.

Worcestershire consists of 6 districts, namely Bromsgrove, Malvern Hills, Redditch, Worcester City, Wychavon, and Wyre Forest. Worcester City is the main administrative city in Worcestershire, and the main towns of Kidderminster, Redditch, Bromsgrove, Stourport-on-Severn, Malvern, Evesham, Pershore and Droitwich Spa are also situated in the county. By area Worcestershire is largely a rural county, although around three quarters of the population of Worcestershire is defined as living in an urban area. Wychavon and Malvern Hills are the two most rural districts, whilst Worcester City is a key employment centre and Redditch was designated New Town status in 1964.

Worcestershire's population according to the 2021 census is 603,600 persons. This compares to 566,200 in 2011. The population in the county has increased by 37,400 since 2011, an increase of 6.6% in the last 10 years. This compares to increases of 6.6% nationally and 6.2% regionally.

Worcestershire has a higher proportion of older people than the national average, and a lower proportion of children and younger adults. The proportions in the county and the whole of England are similar for the 45-49 age range, with proportions lower in Worcestershire than the national average for all younger age groups, and higher in Worcestershire for all older age groups.

Difference in proportions between Worcestershire and England are particularly prevalent in the 20 to 39 age range, with Worcestershire having a notably lower proportion of population, and the 65 to 79 age range, with Worcestershire having a considerably higher proportion of population.

Worcestershire is not seen as a deprived area compared to England as a whole. However, there are still almost 28,000 residents in the county living in the top 10% of deprived areas in the country, an increase from 25,000 residents on the 2015 figures. The results from the Index for Multiple Deprivation (IMD) 2019 data tend to suggest that Worcestershire can be described as slightly “more deprived” in comparison with all other upper tier local authorities in England in 2019 than it was in 2015. At the district level Wyre Forest and Redditch are very close in terms of overall level of deprivation and are the most deprived districts in the county.

There are 18 Lower Layer Super Output Area's (LSOAs) in Worcestershire that are in the top 10% most deprived areas in England, an increase of two on the 2015 IMD release. There are 74 LSOAs in the county within the top 30% most deprived areas in England, an increase of six on 2015. Worcester City has the most LSOAs within the top 10% most deprived areas, with eight, whilst Redditch and Wyre Forest have the most LSOAs within the top 30% most deprived areas, at 21 and 20 respectively.

Approach and Methodology

The law which governs the work of the LGBCE says that it can only make decisions about new division arrangements based on 3 specific criteria:

- a. **Electoral equality** - that each Councillor represents a similar number of electors.
- b. **Convenient and effective local government** - to propose divisions that use clearly identifiable boundaries, have appropriate names, and make it as easy as possible for the Councillors to do their jobs, and
- c. **Community identity and interests** - reflect the communities local people live in.

The enclosed proposals consider all three criteria where possible.

As part of the effective and convenient local government requirement, the LGBCE tries to plot County Council division boundaries which are co-terminous with district ward boundaries. This means that residents are clear about who represents them on each authority; the administration of local elections is straightforward, and that County Councillors communicate with a small number of district representatives as part of their role. There are occasions when such 'coterminosity' cannot be achieved without adversely affecting electoral equality.

Proposals for each division are made on a district basis. Four of the District Councils - Malvern Hills, Redditch Borough, Worcester City and Wychavon - have had reviews of their ward boundaries recently. The LGBCE consulted on variations to some ward boundaries in Worcester City over the summer and its final proposals for boundaries were published on 29th August. The new ward boundaries are reflected in this submission.

The LGBCE sought details of the estimated number of electors in the county in 2029. This was achieved using:

- details of the current number of electors
- proposals for areas of housing development, obtained from colleagues in each Council

The number of forecast electors was calculated using a standard formula provided by the LGBCE. The data has been published on the LGBCE's website during the consultation period.

Applying the projected increase in electorate numbers to each division showed that in 2029 it was likely that 23 divisions would be above 10% variance (plus or minus) from the county average number. The proposal made by the council has reduced that to 5.

Initial draft proposals were mapped based on moving polling district areas to try and meet the electoral equality objective. These proposals were shared with Group Leaders and all Councillors, who were invited to comment and to feedback about considerations for communities in each area. Feedback was then assessed in consideration of the criteria set out by the LGBCE. Suggestions that met the criteria and had a positive outcome for each district overall were taken forward into the final proposals.

Current Number of Electors per Division and Variance

The table below looks at each division and illustrates the number of Councillors that represent each of them, together with the current number of electors and variance, compared with the forecast number of electors and variance for 2029.

Name of division	No of cllrs per division	Electorate 2022	Variance 2022	Electorate 2029	Variance 2029	District
Alvechurch	1	7,572	-5%	7,963	-8%	Bromsgrove
Arrow Valley East	2	16,445	3%	17,163	-1%	Redditch
Arrow Valley West	2	15,650	-2%	16,225	-7%	Redditch
Beacon	1	9,520	19%	9,925	14%	Bromsgrove
Bedwardine	1	7,424	-7%	7,879	-9%	Worcester City
Bewdley	1	7,278	-9%	7,590	-13%	Wyre Forest
Bowbrook	1	9,506	19%	10,502	21%	Wychavon
Bredon	1	7,885	-1%	8,204	-6%	Wychavon
Broadway	1	6,917	-13%	7,433	-14%	Wychavon
Bromsgrove Central	1	7,967	0%	8,412	-3%	Bromsgrove
Bromsgrove East	1	8,089	1%	10,556	22%	Bromsgrove
Bromsgrove South	1	8,298	4%	8,974	3%	Bromsgrove
Bromsgrove West	1	7,807	-2%	11,255	30%	Bromsgrove
Chaddesley	1	6,884	-14%	7,216	-17%	Wyre Forest
Claines	1	7,514	-6%	7,845	-10%	Worcester City
Clent Hills	1	9,412	18%	9,857	13%	Bromsgrove
Cookley, Wolverley & Wribbenhall	1	7,950	-1%	10,296	19%	Wyre Forest
Croome	1	7,845	-2%	9,128	5%	Malvern
Droitwich East	1	8,572	7%	9,210	6%	Wychavon
Droitwich West	1	7,261	-9%	7,640	-12%	Wychavon
Evesham North West	1	8,892	11%	9,994	15%	Wychavon
Evesham South	1	9,099	14%	9,691	12%	Wychavon
Gorse Hill & Warndon	1	7,827	-2%	8,186	-6%	Worcester City
Hallow	1	8,095	1%	9,944	14%	Malvern
Harvington	1	7,950	-1%	8,259	-5%	Wychavon
Littletons	1	9,535	19%	10,510	21%	Wychavon
Malvern Chase	1	7,355	-8%	8,212	-5%	Malvern
Malvern Langland	1	7,673	-4%	8,117	-7%	Malvern
Malvern Link	1	7,921	-1%	8,844	2%	Malvern
Malvern Trinity	1	6,646	-17%	6,987	-20%	Malvern
Nunnery	1	7,293	-9%	7,535	-13%	Worcester City
Ombersley	1	8,659	8%	9,003	4%	Wychavon
Pershore	1	9,080	14%	9,896	14%	Wychavon
Powick	1	8,186	2%	8,745	1%	Malvern
Rainbow Hill	1	7,064	-12%	8,016	-8%	Worcester City
Redditch North	2	15,842	-1%	17,090	-2%	Redditch
Redditch South	2	15,515	-3%	16,281	-6%	Redditch
Riverside	1	8,786	10%	9,500	9%	Worcester City

St Barnabas	1	7,448	-7%	7,815	-10%	Wyre Forest
St Chads	1	6,940	-13%	7,766	-11%	Wyre Forest
St Georges & St Oswalds	1	7,270	-9%	7,681	-12%	Wyre Forest
St John	1	6,213	-22%	6,542	-25%	Worcester City
St Johns	1	7,223	-10%	7,575	-13%	Wyre Forest
St Marys	1	9,366	17%	10,149	17%	Wyre Forest
St Peter	1	8,705	9%	9,215	6%	Worcester City
St Stephen	1	8,280	4%	8,581	-1%	Worcester City
Stourport on Severn	2	15,764	-1%	17,767	2%	Wyre Forest
Tenbury	1	8,391	5%	9,305	7%	Malvern
Upton Snodsbury	1	8,387	5%	9,231	6%	Wychavon
Warndon Parish	1	8,718	9%	9,099	5%	Worcester City
Woodvale	1	8,452	6%	8,856	2%	Bromsgrove
Wythall	1	7,178	-10%	7,507	-14%	Bromsgrove

Bromsgrove District

Summary

Bromsgrove District comprises nine divisions. Forecast data illustrates that by 2029, three of the divisions will have a variance of +/- 10% and a further two will have a variance of above +/- 20%. The proposed changes improve the electoral equality and leaves three divisions with a variance of +/- 10%

The projected number of electors in the Bromsgrove District in 2029 is 83,305, equating to a district average of 9,256 electors per Councillor. This compares to a county average of 8,687. To reduce variances in the divisions that exceeded +/-10% it was also necessary to make changes to divisions that were within +/- 10% variance.

When looking at Bromsgrove District the primary consideration was electoral equality and, where appropriate, community elements. Coterminosity was considered, however due to the impending ward review at district level, more weighting was allocated to the first two sets of criteria.

Bromsgrove West had the highest variance of any division across the county due to significant housing development, which took the projected variance to 30% in 2029. To address this issue, consequential changes were made across the district to accommodate this growth and ensure that all remaining divisions were either within tolerance, or as close to tolerance as possible. This has been achieved with the exception of Clent Hills, Bromsgrove West and Wythall.

Clent Hills lies in the upper west side of the district, with most of the division boundary landlocked between out of county authorities and Wyre Forest District. The remaining boundary is with the divisions of Woodvale and Beacon. This reduced options for movement. There was only one polling district (BRA) that could have been moved but it would have resulted in Woodvale having a variance of 18%, creating a bigger variance than the variance we were seeking to rectify. The option of splitting a polling district at street level was explored but it was challenging to find a road or geographical feature that would form a natural boundary without splitting a village or community, therefore having a detrimental effect on community ties. This view was supported by Member feedback.

Variance has remained above +10% in Bromsgrove West. Originally, the variance was forecast to be +30%, with significant housing development impacting on the number of electors. The current +11% variance indicates that significant improvement has been made in terms of electoral equality. The M5 is kept as the division boundary to the West, which then limited options for changes. The main changes proposed are to move polling districts SAC and LWB from West to Central and RHC from Bromsgrove West to Bromsgrove South.

To address the subsequent impact on elector numbers in Bromsgrove Central division, the potential to move polling district NTA out of the division to Bromsgrove East was explored but not pursued because of community ties. For example, it is part of Norton ward and children in Norton go to school in Lickey End. Other potential 'tweaks' would have removed coterminosity with current district wards and adversely impacted on convenient local government.

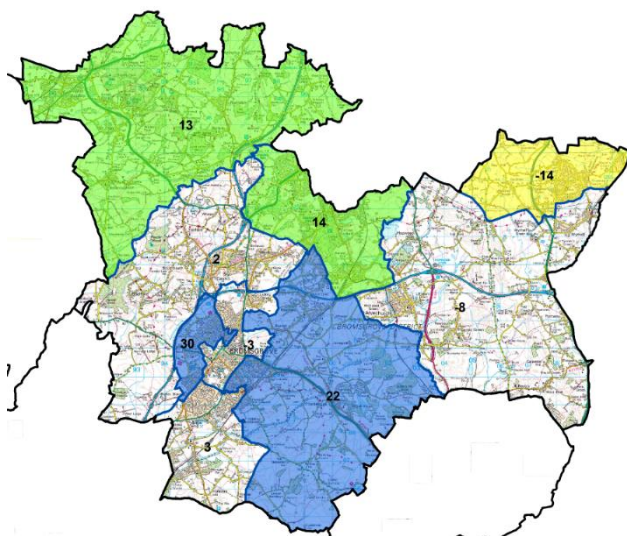
There was a strong community argument to keep the village of Wythall in one division. The proposed boundary has taken account of this by using the A435 as a boundary and including most of the settlement in the division, which results in the variance of 12%. Including all of polling district WWB in Wythall would be coterminous with the Parish Council boundary but extends the variance again.

The table below illustrates the current number of electors and variance, compared with the forecast to 2029.

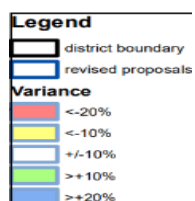
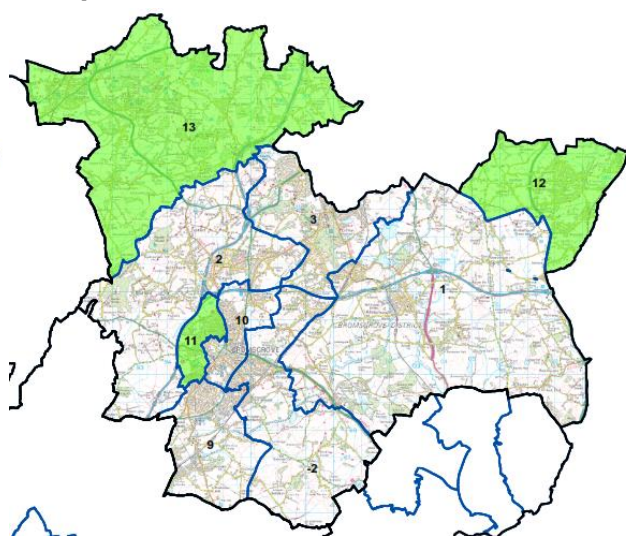
BROMSGROVE							
Name of division	Number of cllrs per division	Electorate 2022	Variance 2022	Electorate 2029	Variance 2029	Proposed Electorate	Proposed Variance
Alvechurch	1	7,572	-5%	7,963	-8%	8759	1%
Beacon	1	9,520	19%	9,925	14%	8939	3%
Bromsgrove Central	1	7,967	0%	8,412	-3%	9528	10%
Bromsgrove East	1	8,089	1%	10,556	22%	8538	-2%
Bromsgrove South	1	8,298	4%	8,974	3%	9502	9%
Bromsgrove West	1	7,807	-2%	11,255	30%	9607	11%
Clent Hills	1	9,412	18%	9,857	13%	9857	13%
Woodvale	1	8,452	6%	8,856	2%	8856	2%
Wythall	1	7,178	-10%	7,507	-14%	9719	12%

Map of Bromsgrove Division:

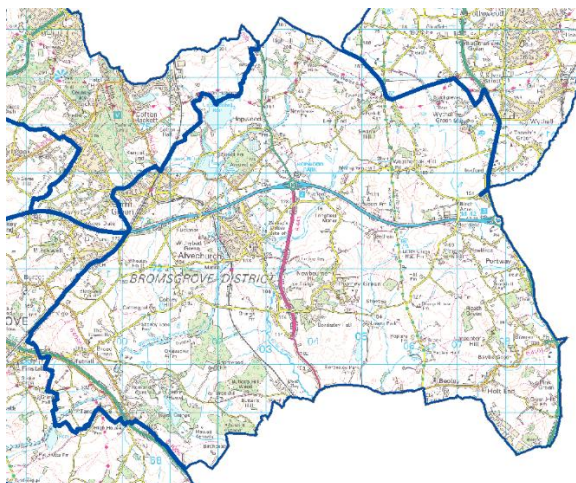
Current divisions



Proposed divisions



Division 1: Alvechurch



Move out:

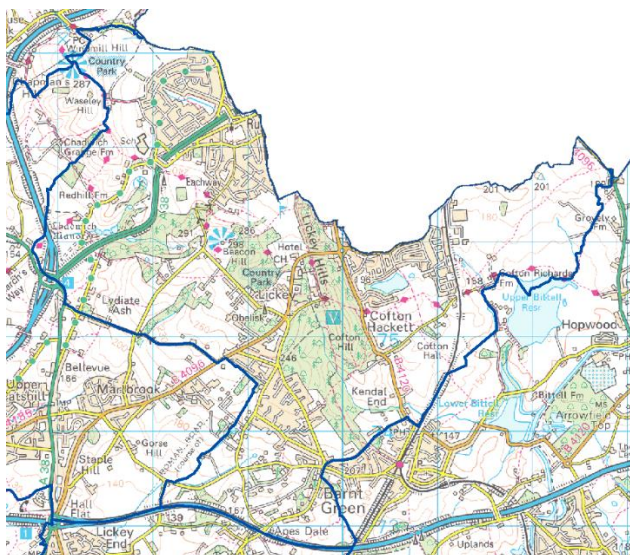
- 981 electors in polling district WTA to Wythall
- 1231 electors in polling district WWB to Wythall

Move in:

- 206 electors from polling district WWB in Wythall into Alvechurch (part of a polling district) with the boundary being along the A435.
- 1654 electors from polling district BHB from Beacon into Alvechurch
- 1354 electors from polling district TAC from Bromsgrove East into Alvechurch

These changes reduce the variance from -8% to 1%

Division 2: Beacon



Move out:

- 1654 electors from polling district BHB from Beacon to Alvechurch

Move in:

- 668 electors in polling district LHC into Beacon from Bromsgrove East.

These changes reduce the variance from 14% to 3%

Division 3: Bromsgrove Central**Move out:**

- 11 electors from polling district SSB to Bromsgrove East

Move in:

- 598 electors in polling district SAC from Bromsgrove West
- 522 electors in polling district LWB from Bromsgrove West
- 7 electors in part of polling district NTB in Bromsgrove East.

This changes the variance from -3% to 10%

Division 4: Bromsgrove East



Move out:

- 668 electors in polling district LHC to Beacon
- 7 electors in polling district NTB to Bromsgrove Central
- 1354 electors in polling district TAC to Alvechurch

Move in:

- 11 electors in polling district SSB from Bromsgrove Central

These changes reduce the variance from 22% to -2%

Division 5: Bromsgrove South



Move in:

- 528 electors in polling district RHC from Bromsgrove West

This change increases the variance from 3% to 9%, However, on balance this increase improves electoral equality in other divisions within Bromsgrove.

Division 6: Bromsgrove West



Move out:

- 598 electors in polling district SAC to Bromsgrove Central
- 522 electors in polling district LWB to Bromsgrove Central
- 528 electors in polling district RHC to Bromsgrove South

These changes reduce the variance from 30% to 11%

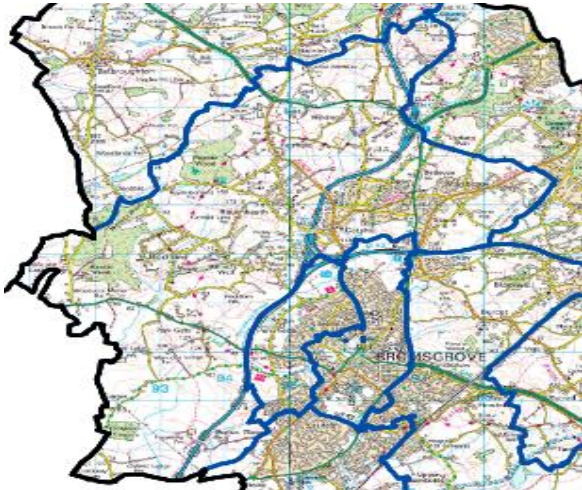
Division 7: Clent Hills

No changes

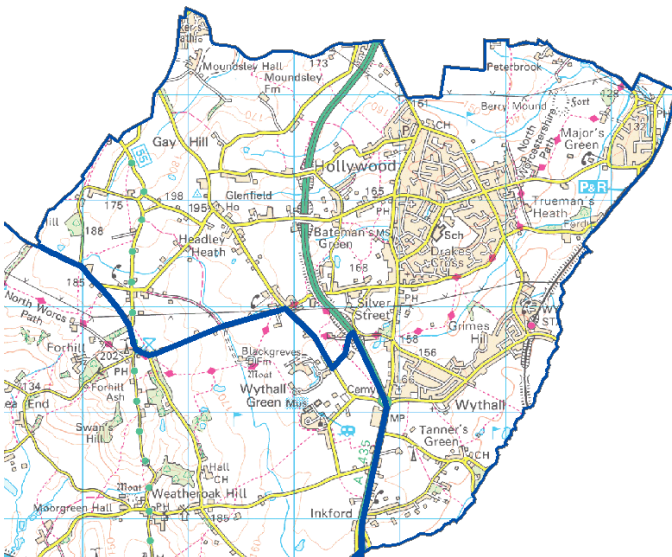


Division 8: Woodvale

No changes



Division 9: Wythall



Move in:

- 981 electors from polling district WTA from Alvechurch
- 1231 electors from polling district WWB from Alvechurch (part of a polling district).

These changes reduce the variance from -14% to 12%

Malvern Hills District

Summary

Malvern Hills District comprises eight divisions. Forecast data illustrates that by 2029, two of the divisions will have a variance of +/- 10%. The proposed changes improve the electoral equality and leaves all divisions with a variance of less than +/- 10%

The projected number of electors in the Malvern Hills District in 2029 is 69,282, equating to a district average of 8660 electors per Councillor. This compares to a county average of 8,687. In order to reduce variances in the divisions that exceeded +/-10% it was necessary to make changes to divisions that were within +/- 10% variance.

When assessing the forecast variance, the divisions that exceed +/-10% are Hallow and Malvern Trinity, where Hallow has too many electors, and Malvern Trinity has too few. Geographically, these two divisions are not adjacent, but are separated by Malvern Link. Therefore, the proposed changes include movement from Hallow into Malvern Link, and Malvern Link into Malvern Trinity to achieve electoral equality.

A further move is made from Powick to Malvern Link to achieve coterminosity with the district wards.

166 electors moved from new polling district MLK4 (previously part of MPR3) which is the Lygon ward of Malvern Town Council, currently in Malvern Langland Division, to Malvern Trinity division to achieve coterminosity with the parish ward boundary in this area.

The table below illustrates the current number of electors and variance, compared with the forecast to 2029.

MALVERN							
Name of division	Number of Cllrs per division	Electorate 2022	Variance 2022	Electorate 2029	Variance 2029	Proposed Electorate	Proposed Variance
Croome	1	7,845	-2%	9,128	5%	9,128	5%
Hallow	1	8,095	1%	9,944	14%	9,403	8%
Malvern Chase	1	7,355	-8%	8,212	-5%	8,212	-5%
Malvern Langland	1	7,673	-4%	8,117	-7%	7,951	-8%
Malvern Link	1	7,921	-1%	8,844	2%	8,250	-5%
Malvern Trinity	1	6,646	-17%	6,987	-20%	8,556	-2%
Powick	1	8,186	2%	8,745	1%	8,477	-2%
Tenbury	1	8,391	5%	9,305	7%	9,305	7%

Map of Malvern Division:

Current divisions



Proposed divisions



Division 1: Croome

No Changes



Division 2: Hallow



Move out:

- 328 electors in polling district BRH1 to Malvern Link
- 213 electors in polling district BRH2 to Malvern Link

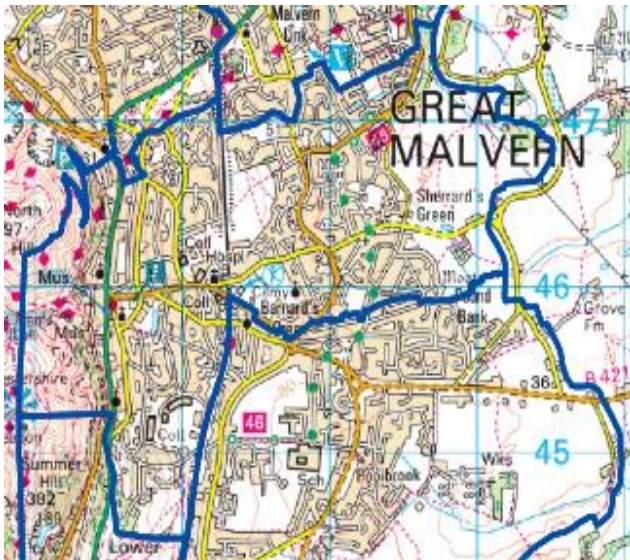
These changes reduce the variance from 14% to 8%

Division 3: Malvern Chase

No Changes



Division 4: Malvern Langland



Move out:

- 166 from new polling MLK4 (Previously MLK3) in Malvern Langland to Malvern Trinity (part of a polling district)

These changes move the variance from -7% to -8%

Division 5: Malvern Link



Move in:

- 328 electors in polling district BRH1 from Hallow
- 213 electors in polling district BRH2 from Hallow
- 268 electors in polling district PWK4 from Powick This change was made to improve coterminosity with district wards.

These changes move the variance from 2% to -5%

Division 6: Malvern Trinity



Move in:

- 1569 electors from polling district MLK1 from Malvern Link to achieve coterminosity in this area. This includes 166 from new polling MLK4 (Previously MLK3, part of a polling district)

These changes reduce the variance from -20% to -2%

Division 7: Powick



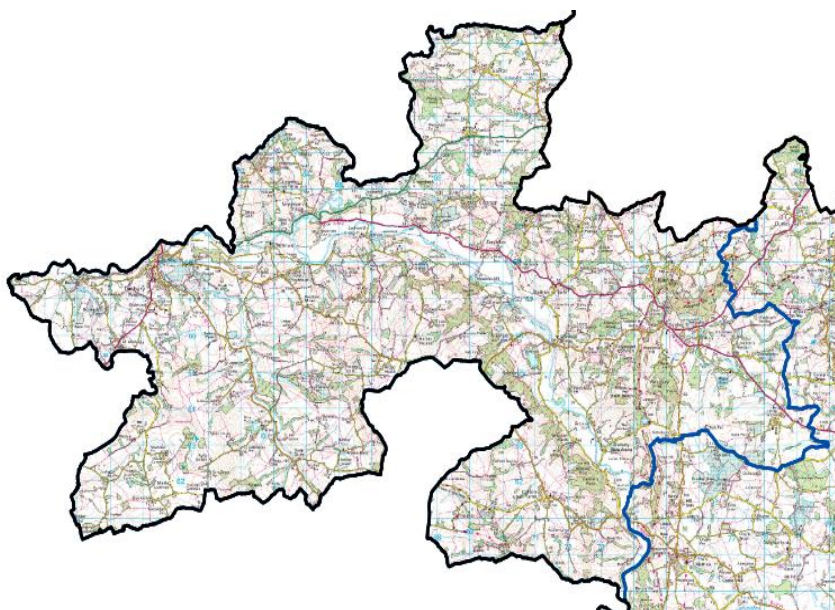
Move out:

- 268 electors from polling district PWK4 Malvern Link. This change was made to improve coterminosity with district wards.

This change moves the variance from 1% to -2%

Division 8: Tenbury

No Changes



Redditch District

Summary

The area of the Borough of Redditch comprises four divisions, currently represented by eight Councillors. Forecast data illustrates that by 2029, none of the Divisions will have a variance of +/- 10%. The proposed changes therefore address a coterminosity issue. The projected number of electors in the Redditch Borough area in 2029 is 66,759, equating to a district average of 8,345 electors per Councillor. This compares to a county average of 8,687.

Although electoral equality was forecast in Redditch, feedback from our members suggested that there was a coterminosity issue to address. We therefore took 686 electors that were in the Wire Hill estate into Redditch South. This resulted in the variance for Arrow Valley West becoming over tolerance, therefore a polling district was moved into the division to even out the electoral equality.

Name changes to certain divisions were also proposed by members. These included,

- **Redditch East** (formerly Arrow Valley East)
- **Redditch West** (formerly Arrow Valley West)

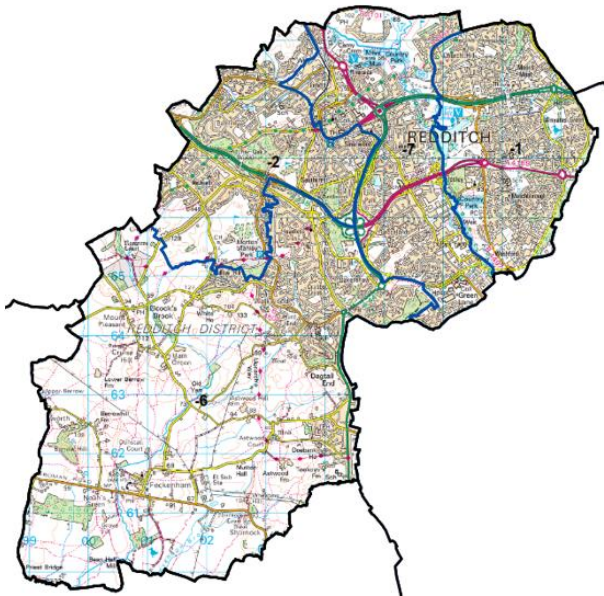
These changes are suggested due to there not being local affinity with the name Arrow Valley, residents identify with the name Redditch, and it is a consistent approach to the names of divisions across the Borough.

The table below illustrates the current number of electors and variance, compared with the forecast to 2029.

REDDITCH							
Name of division	Number of Cllrs per division	Electorate 2022	Variance 2022	Electorate 2029	Variance 2029	Proposed Electorate	Proposed Variance
Arrow Valley East	2	16,445	3%	17,163	-1%	15926	-8%
Arrow Valley West	2	15,650	-2%	16,225	-7%	16776	-3%
Redditch North	2	15,842	-1%	17,090	-2%	17090	-2%
Redditch South	2	15,515	-3%	16,281	-6%	16967	-2%

Map of Redditch Division: Before and After

Current divisions



Proposed divisions



Division 1: Arrow Valley East

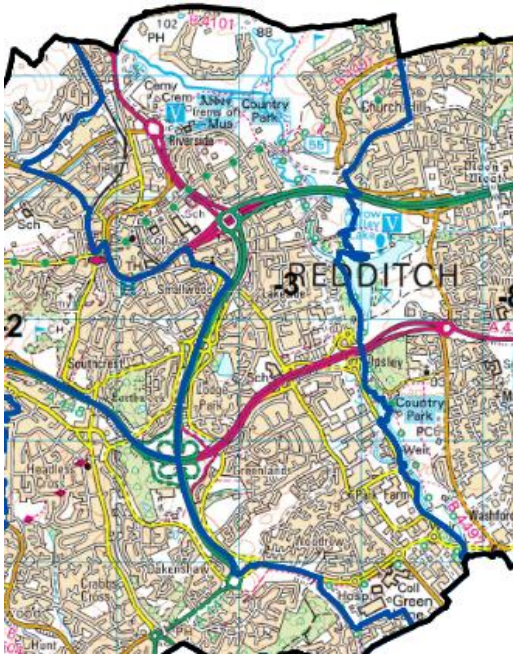


Move out:

- 1237 electors in polling district CHD to Arrow Valley West

This change moves the variance from -1% to -8%

Division 2: Arrow Valley West



Move Out:

- 686 electors from polling district GRB into Redditch South (part of a polling district)

Move in:

- 1237 electors in polling district CHD from Arrow Valley East

These changes move the variance from -7% to -3%

Division 3: Redditch North

No Change



Division 4: Redditch South



Move in:

- 686 electors from polling district GRB into Redditch South from Arrow Valley West (part of a polling district)

These changes move the variance from -6% to -2%

Worcester City

Summary

Worcester City comprises ten divisions. Forecast data illustrates that by 2029, one of the Divisions will have a variance of +/- 10%, and a further division will have a variance of +/- 20%. The proposed changes improve the electoral equality and leave all divisions with a variance of less than +/- 10%.

The projected numbers of electors in the Worcester City area in 2029 are 82,398, equating to a district average of 8,240 electors per Councillor. This compares to a county average of 8,687. In order to reduce variances in the divisions that were out of threshold it was necessary to make changes to divisions that were within +/- 10% variance.

The proposed changes to Worcester City were particularly challenging due to the low numbers of electors in each division and the relatively high level of variance within +/-10%. This meant that movement between divisions was limited without causing a higher variance elsewhere. However, the proposals place each of the divisions within tolerance whilst offering the best community cohesion possible.

When assessing potential changes to Worcester City divisions, the primary goal was to look at electoral equality, and where possible community ties or interests. As the LGBCE was concurrently undertaking a review of the electoral wards in the City, coterminosity was considered on the basis of the latest proposals from the LGBCE which were published in May 2023. The LGBCE published final proposals for Worcester City on 29th August and the proposals were reviewed so that they are reflected in this submission.

In the LGBCE final proposals for the City, polling district B4 remains within the ward of Battenhall. Our proposals move this polling district into the Nunnery division, which at the time reflected the latest LGBCE proposals published for consultation and was coterminous with the ward boundary. However, following the publication of the LGBCE's final proposals, it no longer holds this benefit. It does provide both St Peter and Nunnery divisions with electoral equality, so we propose to keep these changes within our proposals.

Two changes have been made in response to the LGBCE's final proposals for the City Council. Both are in the Rainbow Hill division and achieve coterminosity with the new ward boundaries with St Stephen and Gorse Hill and Warndon.

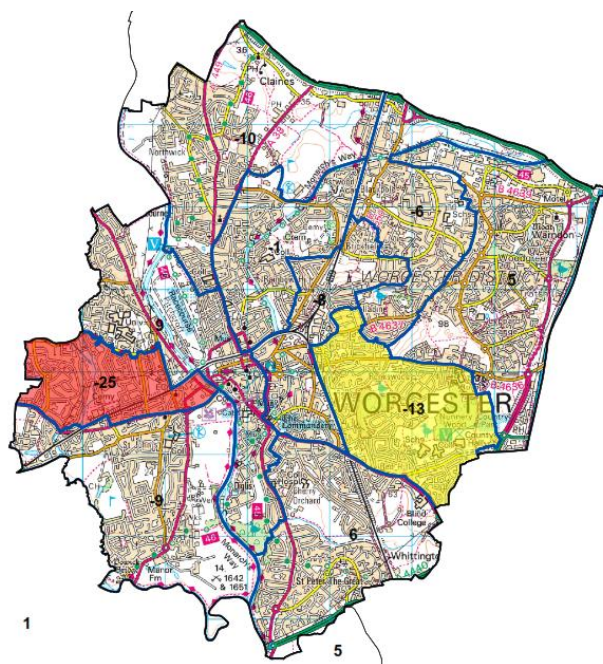
Another consideration, in light of the final proposals for Worcester City, would be to look at whether coterminosity could be achieved at the southern tip of the new Cathedral ward at Diglis. This cannot be achieved under these proposals, without making changes to neighbouring divisions in order to still achieve electoral equality. Suggestions from Members to change boundaries between divisions to reflect the community on the west side of the river have also been difficult to meet due to the impact on electoral equality in neighbouring divisions.

The table below illustrates the current number of electors and variance, compared with the forecast to 2029.

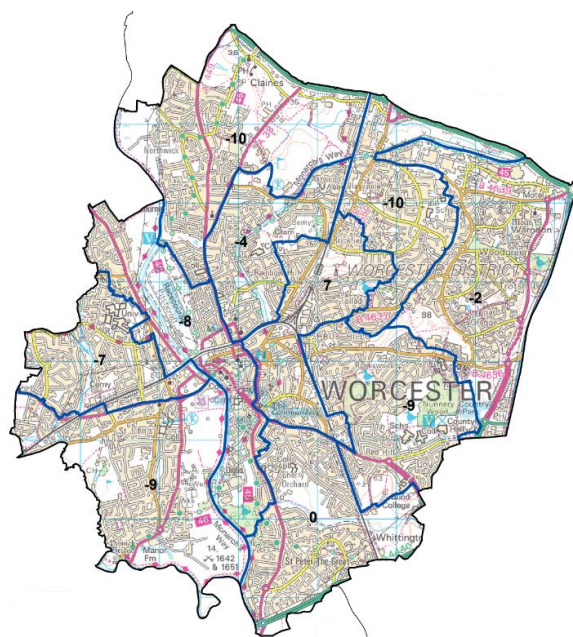
WORCESTER CITY							
Name of division	Number of cllrs per division	Electorate 2022	Variance 2022	Electorate 2029	Variance 2029	Proposed Electorate	Proposed Variance
Bedwardine	1	7,424	-7%	7,879	-9%	7879	-9%
Claines	1	7,514	-6%	7,845	-10%	7845	-10%
Gorse Hill & Warndon	1	7,827	-2%	8,186	-6%	7846	-10%
Nunnery	1	7,293	-9%	7,535	-13%	7919	-9%
Rainbow Hill	1	7,064	-12%	8,016	-8%	9296	7%
Riverside	1	8,786	10%	9,500	9%	7950	-8%
St John	1	6,213	-22%	6,542	-25%	8092	-7%
St Peter	1	8,705	9%	9,215	6%	8727	0%
St Stephen	1	8,280	4%	8,581	-1%	8331	-4%
Warndon Parish	1	8,718	9%	9,099	5%	8513	-2%

Map of Worcester City Divisions

Current divisions



Proposed divisions



Division 1: Bedwardine

No Change

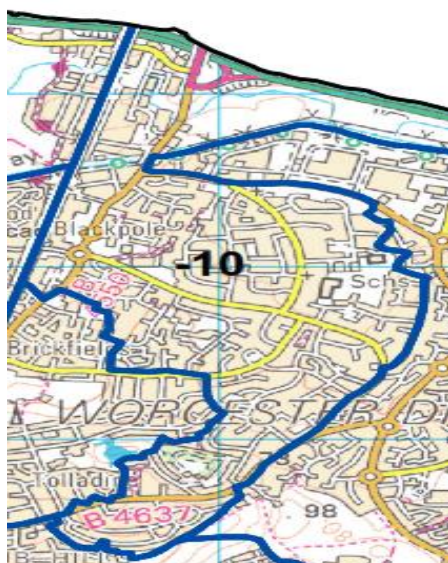


Division 2: Claines

No Change



Division 3: Gorse Hill and Warndon



Move Out:

- Took out 340 electors out of polling district F3 to Rainbow Hill (part of a polling district). This was to reach coterminosity with ward boundaries.

This change moves the variance from -6% to -10%

Division 4: Nunnery



Move out:

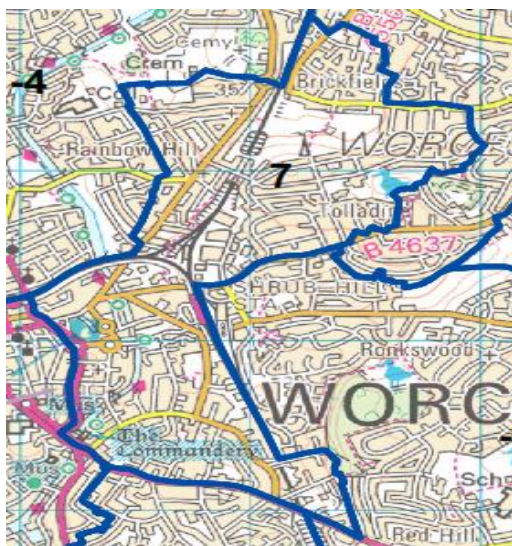
- 256 electors in polling district D4B to Rainbow Hill
- 434 electors in polling district H3B to Rainbow Hill

Move in:

- 586 electors in polling district Q2 from Warndon Parish
- 488 electors in polling district B4 from St Peter

These changes reduce the variance from -13% to -9%

Division 5: Rainbow Hill



Move in:

- 256 electors in polling district D4B from Nunnery
- 434 electors in polling district H3B from Nunnery
- 250 electors from polling district H1 from M1 in St Stephens into Rainbow Hill (part of a polling district). This change is made to reach coterminosity with district ward boundaries.
- 340 electors out of polling district F3 from Warndon and Gorse Hill (part of a polling district). This change is made to reach coterminosity with district ward boundaries.

These changes reduce the variance from -8% to 7%

Division 6: Riverside



Move out:

- 619 electors in polling district J4 to St John
- 931 electors in polling district J1 to St John

These changes improve electoral equality from 9% to -8%

Division 7: St John



Move in:

- 619 electors in polling district J4 from Riverside
- 931 electors in polling district J1 from Riverside

These changes improve electoral equality from -25% to -7%

Division 8: St Peter



Move out:

- 488 electors in polling district B4 into Nunnery

This change improves electoral equality from 6% to 0%

Division 9: St Stephen

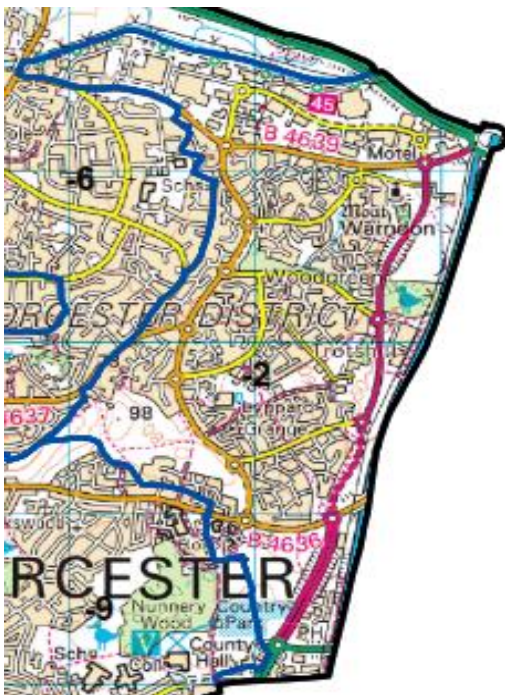


Move out:

- 250 electors from polling district M1 into Rainbow Hill (part of a polling district). This change was made to reach coterminosity with the district ward boundary.

This change moves electoral equality from -1% to -4%

Division 10: Warndon Parish



Move out:

- 586 electors in polling district Q2 into Nunbury

This change improves electoral equality from 5% to -2%

Wychavon District

Summary

There are twelve divisions in the Wychavon District. Forecast data illustrates that by 2029, five of the divisions will have a variance of +/- 10%, and a further two divisions will have a variance of +/- 20%. The proposed changes improve the electoral equality and only leaves one division with a variance of more than +/- 10%

Wychavon is forecast to have a total electorate of 109,573 in 2029. It will retain twelve Councillors and will therefore have an average electorate per division of 9,131, compared to a county average of 8,687. Due to the higher number of electors in this district than others, the majority of variances against the county average are positive. In order to reduce variances in the divisions that were out of threshold it was necessary to make changes to divisions that were within +/- 10% variance.

In trying to maintain electoral equality and represent community identities, it has been difficult to achieve coterminosity between divisions and ward boundaries in the district. The warding patterns for the district means that it is difficult to achieve coterminous boundaries. Recent and proposed developments have added to the complexity in some areas.

The rural nature of the district outside the three main towns means that some divisions cover a large geographical area. Some Councillors will represent areas with several Parish Councils and meetings which impacts on their workload as they engage with them. For example, when looking at the boundary between Bowbrook and Ombersley, one suggestion was to move Hadzor polling district into Ombersley division to address electoral equality. This would add to the number of Parish Council meetings the Councillor for that division would be expected to attend and would split a grouped parish arrangement. The parish has therefore been retained in Bowbrook to maintain those local links.

Bowbrook division was forecast to be 21% over the county average in 2029. The division borders Droitwich Spa and currently includes housing developments to the south of the town which impacts on electorate numbers. Residents of these developments also look to the town for local services. Local members suggested moving the housing developments at Copcut in polling district RU, and in southeast Droitwich in polling districts DBJ and DBN, from Bowbrook into the town and the divisions of Droitwich West and East. The numbers of electors in the relevant polling districts are too high to move them into Droitwich West or East divisions as a totality without increasing the variances in both divisions to well in excess of 10%.

These proposals therefore include splitting polling district DBJ at Primsland Way to transfer 616 voters in the northern part of the polling district into Droitwich East division. Primsland Way as a boundary is consistent with it being used as the boundary between polling districts DBM and DBN to the east.

As mentioned above, achieving coterminosity has been a challenge. Members had suggested that the old A38 through Droitwich (current B0490, Worcester Road) should be used as the boundary between Droitwich West and East divisions as this represents a divide in the town which residents would recognise. We modelled splitting polling districts DBF and DBH to achieve this. The impact on elector numbers was negligible, but it does not improve coterminosity. We also looked at splitting polling district DBJ along the same road to move the 'triangle' of development between Roman Way and Worcester Road from Bowbrook into Droitwich West, but again the impact on overall numbers was too great.

The other division in Wychavon with variance over 20% was Littletons which was forecast to be minus 21%. In adding to the number of electors in this division some coterminosity with district wards has been lost.

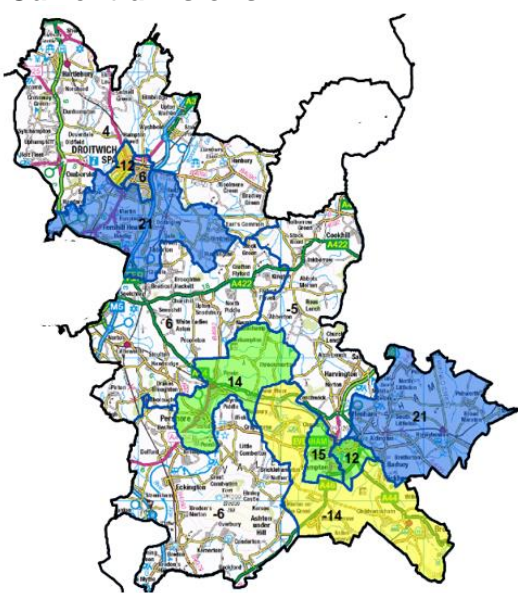
Addressing the variance of 14% in Pershore has not been straightforward as the town has expanded since the last boundary review and has a north-south alignment which makes changes using polling districts difficult to achieve. For example, one option was to move polling district NH (Hill and Moor) from Pershore to Broadway. However, the local member commented that there is a strong community identity here. For example, all local parishes participate in the community liaison group for the county landfill site which sits geographically in the centre of the Pinvin ward and has created a strong sense of identity within the area. This submission therefore recommends that the variance for Pershore remains at 14%.

The table below illustrates the current number of electors and variance, compared with the forecast to 2029.

WYCHAVON							
Name of division	Number of cllrs per division	Electorate 2022	Variance 2022	Electorate 2029	Variance 2029	Proposed Electorate	Proposed Variance
Bowbrook	1	9,506	19%	10,502	21%	9092	5%
Bredon	1	7,885	-1%	8,204	-6%	8941	3%
Broadway	1	6,917	-13%	7,433	-14%	8946	3%
Droitwich East	1	8,572	7%	9,210	6%	8899	2%
Droitwich West	1	7,261	-9%	7,640	-12%	8932	3%
Evesham North							
West	1	8,892	11%	9,994	15%	9433	9%
Evesham South	1	9,099	14%	9,691	12%	9539	10%
Harvington	1	7,950	-1%	8,259	-5%	9336	7%
Littletons	1	9,535	19%	10,510	21%	8260	-5%
Ombersley	1	8,659	8%	9,003	4%	8875	2%
Pershore	1	9,080	14%	9,896	14%	9896	14%
Upton Snodsbury	1	8,387	5%	9,231	6%	9424	8%

Map of Wychavon Division:

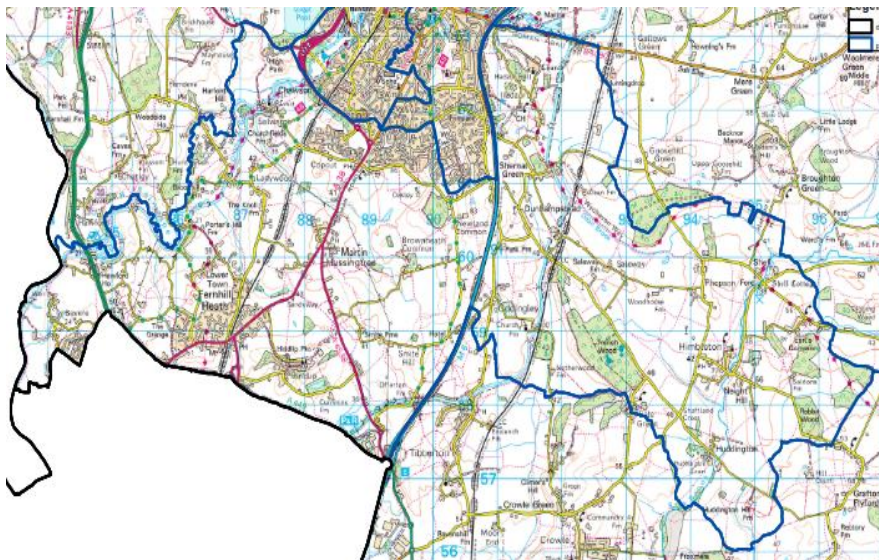
Current divisions



Proposed divisions



Division 1: Bowbrook

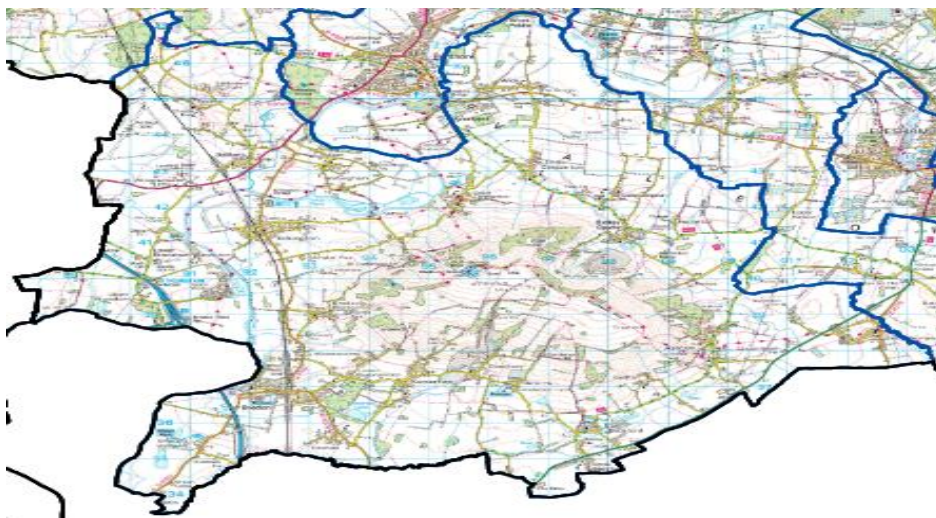


Move out:

- 853 electors from polling district DBJ into polling district DBM in Droitwich East (part of a polling district)
- 557 electors in polling district RJ to Upton Snodsbury

These changes improve electoral equality from 21% to 5%

Division 2: Bredon

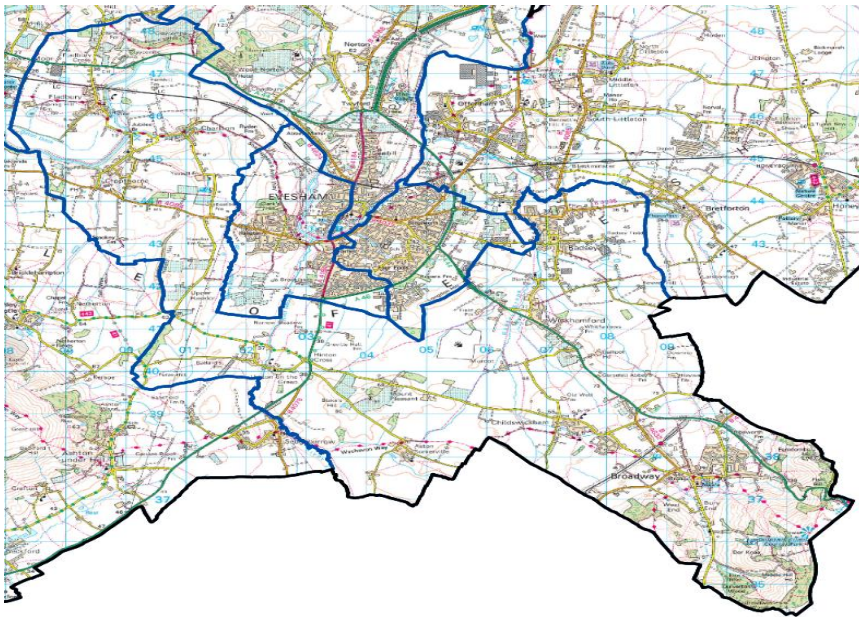


Move in:

- 737 electors in from polling district CZC from Broadway

This change improves electoral equality from -6% to 3%

Division 3: Broadway



Move out:

- 737 electors out from polling district CZC to Bredon

Move in:

- 2,172 electors in from polling district ABC from Littletons
- 78 electors in from polling district ABD from Littletons

These changes improve electoral equality from -14% to 3%

Division 4: Droitwich East



Move out:

- 1,292 electors out from polling district DBH to Droitwich West

Move in:

- 128 electors in from polling district RQ in Ombersley into polling district DBD (*Dodderhill*, part of a polling district)
- 853 electors in from polling district DBJ in Bowbrook into polling district DBM (*Primsland Road*, part of a polling district)

These changes improve electoral equality from 6% to 2%

Division 5: Droitwich West

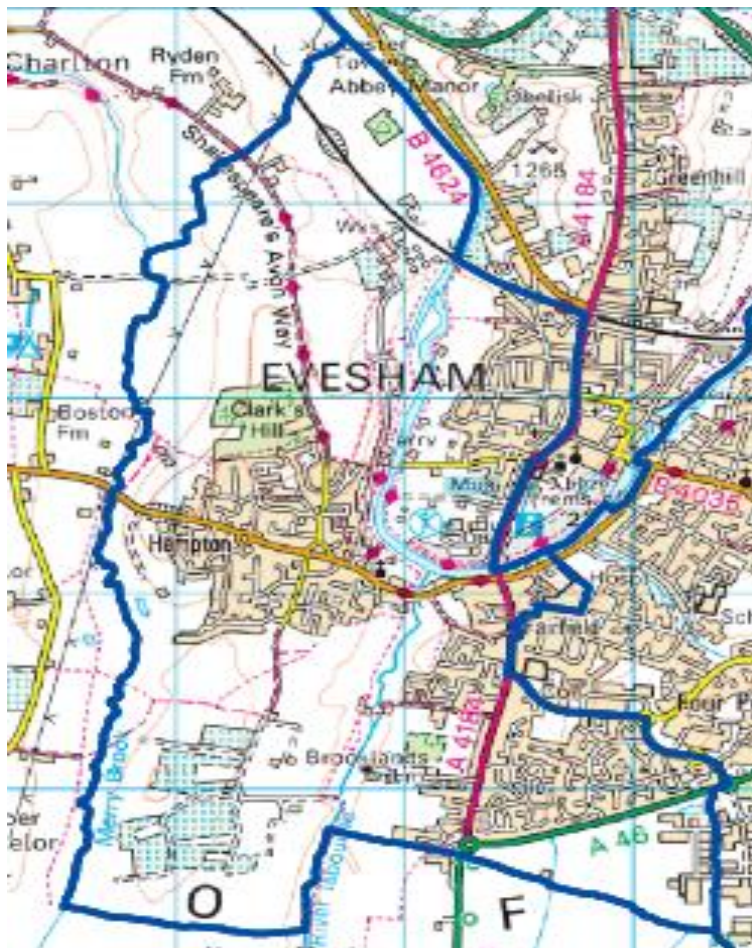


Move in:

- 1292 electors in from polling district DBH from Droitwich East

This change improves electoral equality from -12% to 3%

Division 6: Evesham North West



Move out:

- 561 electors out from polling district BB to Evesham South

This change improves electoral equality from 15% to 9%

Division 7: Evesham South



Move out:

- 713 electors out from polling district BE to Harvington

Move in:

- 561 electors in from polling district BB from Evesham North-West

These changes improve electoral equality from 12% to 10%

Division 8: Harvington

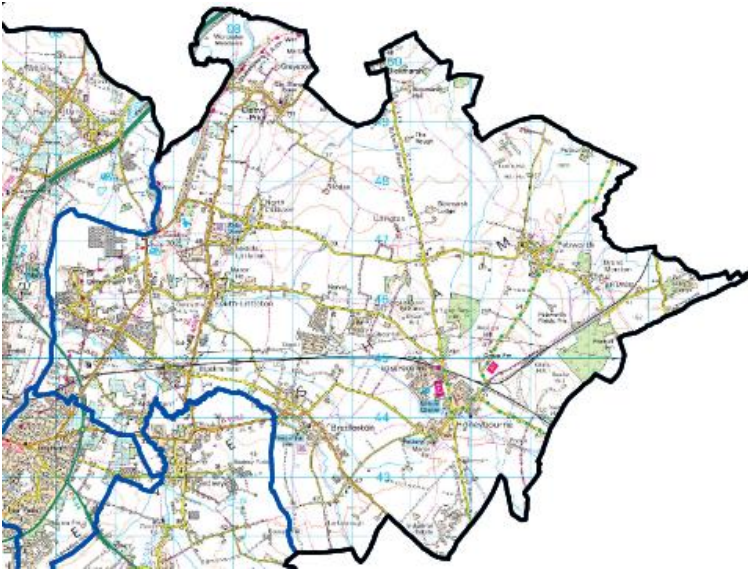


Move in:

- 713 electors in from polling district BE from Evesham South
- 68 electors in from polling district NJA from Upton Snodsbury
- 296 electors in from polling district NJB from Upton Snodsbury

These changes increase the variance from -5% to 7%, However, on balance this increase improves electoral equality in other divisions within the district.

Division 9: Littletons



Move out:

- 2172 electors out from polling district ABC to Broadway
- 78 electors out from polling district ABD to Broadway

These changes improve electoral equality from 21% to -5%

Division 10: Ombersley



Move out:

- 128 electors out from polling district RQ to DBD (Dodderhill, part of a polling district))

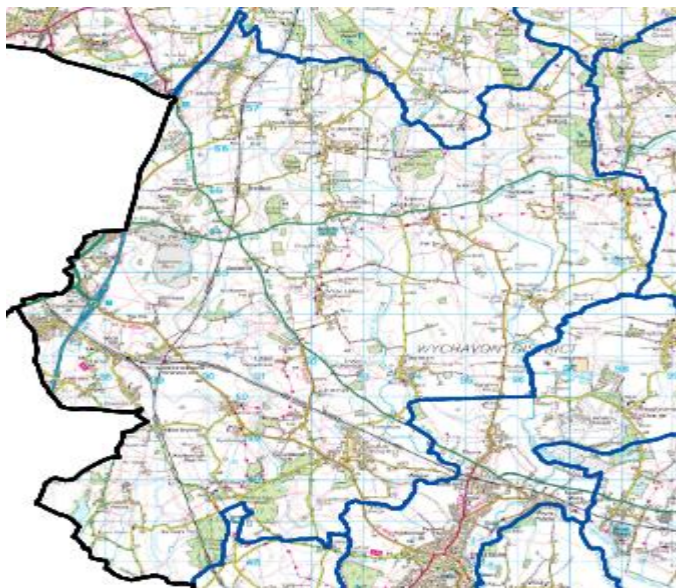
This change improves electoral equality from 4% to 2%

Division 11: Pershore

No Change



Division 12: Upton Snodsbury



Move out:

- 68 electors out from polling district NJA to Harvington
- 296 electors out from polling district NJB to Harvington

Move in:

- 557 electors in from polling district RJ from Bowbrook

These changes increase the variance from 6% to 8%, as a consequence of improving electoral equality in other divisions within the district.

Wyre Forest District

Summary

Wyre Forest District comprises nine divisions represented by single member divisions apart from Stourport with two Councillors. Forecast data illustrates that by 2029, eight of the divisions will have a variance of +/- 10%. The proposed changes include creating a new division by splitting Stourport on Severn, currently a two Member division, to create two single Member divisions. Overall, these changes will improve electoral equality and will leave all divisions with a variance of less than +/- 10%, with the exception of one of the newly created divisions within Stourport on Severn.

The projected number of electors in the Wyre Forest District in 2029 is 83,855, equating to a district average of 8,386 electors per Councillor. This compares to a county average of 8,687.

In Wyre Forest, all but one of the divisions was over tolerance. The divisions of St Marys and Cookley, Wolverley & Wribbenhall contained too many electors, while the remaining divisions, except for Stourport, had too few. Therefore, substantial changes were required to address significant electoral inequality.

Following feedback from Members, it is proposed to split the current Stourport division, represented by 2 Councillors, into two single member divisions. This would bring consistent representation across the district as all divisions would then be represented by a single Councillor. The solution to this was sought by reviewing the 7 polling districts and moving 3 into one newly created division and 3 into the other. The remaining polling district would be split using the main road as a natural boundary. The result of placing the boundary along the main road pushes the variance of this division over 10%, albeit only slightly. This change also reflects community ties and mirrors the division prior to the last Worcestershire County Council boundary review.

There is a significant development at Lea Castle and the proposals split polling district WFR-CO to put the Lea Castle development into Chaddesley from Cookley, Wolverley and Wribbenhall. Bewdley has taken a polling district from Cookley, Wolverley and Wribbenhall keeping in place the rural ties linking this community. Other changes involve moving polling districts within the town of Kidderminster to reduce variances. Member feedback indicated that there were no significant adverse community impacts to these changes.

Name changes to certain divisions are also proposed. These are:

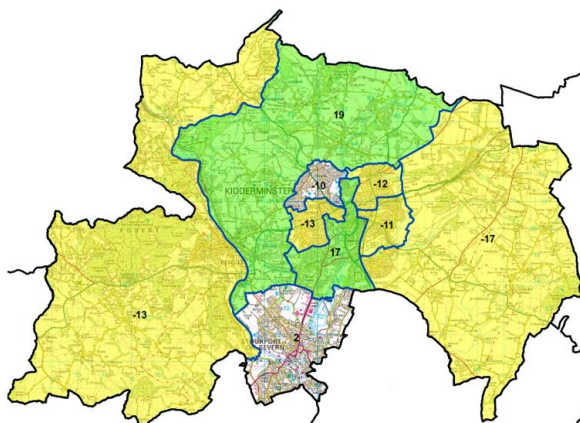
- Change St Marys to St Peters as St Marys church is not in the proposed new division
- Change St Georges and St Oswalds to just St Georges as St Oswalds church has permanently closed.
- Revert to the pre 2005 names for the newly split Stourbridge divisions. Stourport on Severn 1 change to Stourport Mitton and Stourport Central for Stourport on Severn 2

The table below illustrates the current number of electors and variance, compared with the forecast to 2029.

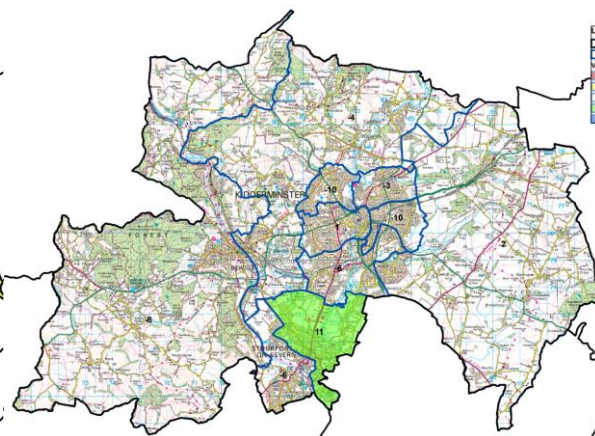
WYRE FOREST							
Name of division	Number of cllrs per division	Electorate 2022	Variance 2022	Electorate 2029	Variance 2029	Proposed Electorate	Proposed Variance
Bewdley	1	7,278	-9%	7,590	-13%	7,965	8%
Chaddesley	1	6,884	-14%	7,216	-17%	8,831	-2%
Cookley, Wolverley & Wribbenhall	1	7,950	-1%	10,296	19%	8,306	4%
St Barnabas	1	7,448	-7%	7,815	-10%	7,815	10%
St Chads	1	6,940	-13%	7,766	-11%	7,811	10%
St Georges & St Oswalds	1	7,270	-9%	7,681	-12%	8,443	3%
St Johns	1	7,223	-10%	7,575	-13%	8,765	-1%
St Marys	1	9,366	17%	10,149	17%	8,152	6%
Stourport on Severn	2	15,764	-1%	17,767	2%	-	-
Stourport on Severn 1						8,149	6%
Stourport on Severn 2						9,618	-11%

Map of Wyre Forest Division:

Current divisions



Proposed divisions



Division 1: Bewdley



Move in:

- 375 electors in from polling district WA-KF1 from Cookley, Wolverley & Wribbenhall

This change improves the variance from -13% to -8%,

Division 2: Chaddesley



Move in:

- 1615 electors in from WFR-CO in Cookley, Wolverley & Wribbenhall (*part of polling district - Lea Castle*)

This change improves the variance from -17% to -2%,

Division 3: Cookley, Wolverley & Wribbenhall



Move out:

- 1615 electors from WFR-CO to Chaddesley
- 375 electors in WA-KF1 from Bewdley

These changes improve the variance from 19% to -4%,

Division 4: St Barnabas

No change



Division 5: St Chads



Move out:

- 2,156 electors out from polling district AS-2 to St Marys

Move in:

- 1,205 electors in from polling district OFC-2 from St Georges and St Oswalds
- 996 electors in from polling district AS-1 from St Marys

These changes improve electoral equality from -11% to -10%

Division 6: St Georges & St Oswalds



Move out

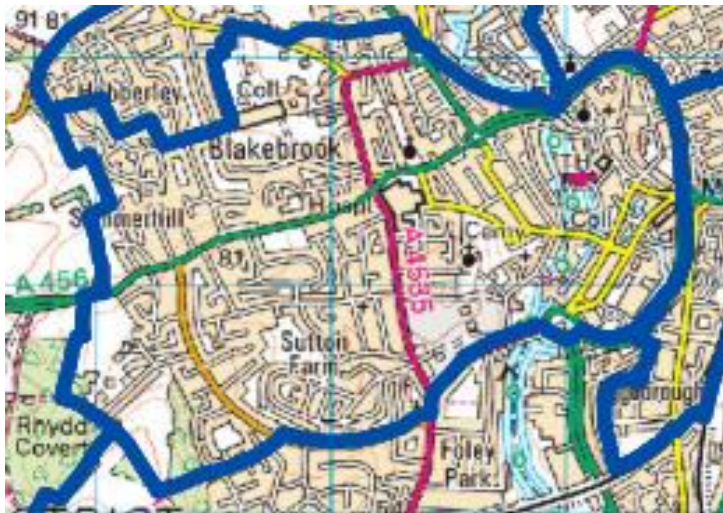
- 1,205 electors out from polling district OFC-2 to St Chads

Move in

- 1,967 electors in from polling district BR-1 from St Marys

These changes improve electoral equality from -12% to -3%

Division 7: St Johns



Move in:

- 861 electors in from polling district BHS-3 from St Marys
- 329 electors in from polling district BHS-4 from St Marys

These changes improve electoral equality from -13% to 1%

Division 8: St Marys



Move out:

- 996 electors out from polling district AS-1 to St Chads
- 861 electors out from polling district BHS-3 to St Johns
- 329 electors out from polling district BHS-4 to St Johns
- 1,967 electors out from polling district BR-1 to St Georges & St Oswalds

Move in:

- 2,156 electors in from polling district AS-2 from St Chads

These changes improve electoral equality from 17% to -6%

Division 9: Stourport on Severn 1



Made up of:

- 2,456 electors from polling district MI-SN1
- 2,071 electors from polling district MI-SN2
- 2,456 electors from polling district MI-SN1
- 1,490 electors from polling district LI-SL (*part of a polling district*)

This division has an electoral variance of 11%

Division 10: Stourport on Severn 2



Made up of:

- 2,616 electors from polling district AKR-AKE
- 2,648 electors from polling district AKR-AKW
- 2,122 electors from polling district AKR-SC
- 742 electors from polling district LI-SL (*part of polling district*)

This division has an electoral variance of -6%