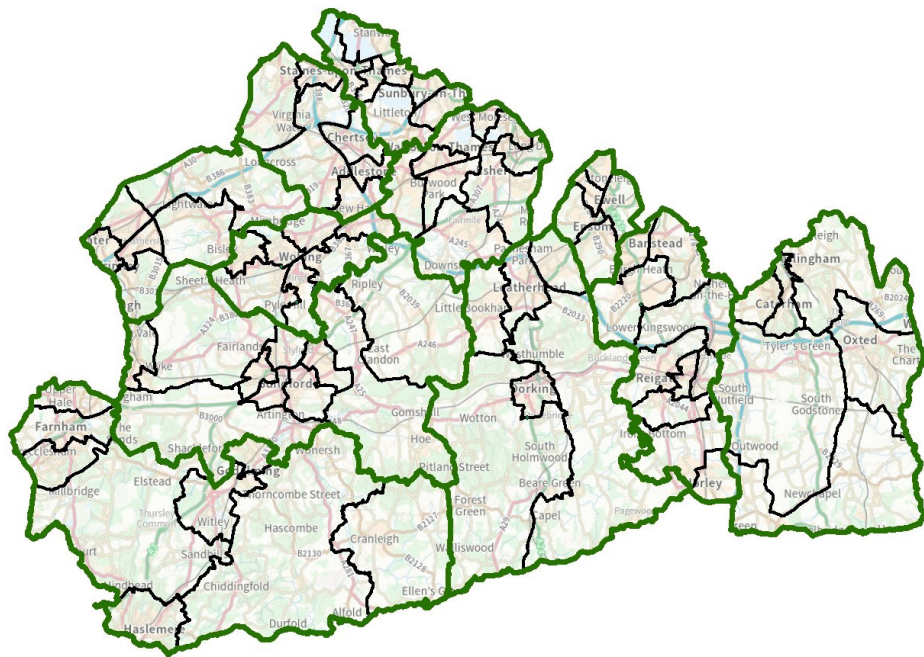


Have your say

Surrey Electoral Review



The Local Government Boundary Commission for England is asking for your views on proposed new electoral arrangements for Surrey.

We want to know:

- Do the proposed divisions reflect local communities?
- How do you think the proposals can be improved?
- Are the names of the proposed divisions right?

Consultation closes: 16 October



reviews@lgbce.org.uk



[www.lgbce.org.uk/
all-reviews/surrey](http://www.lgbce.org.uk/all-reviews/surrey)



Review Officer (Surrey), LGBCE,
PO Box 133, Blyth, NE24 9FE