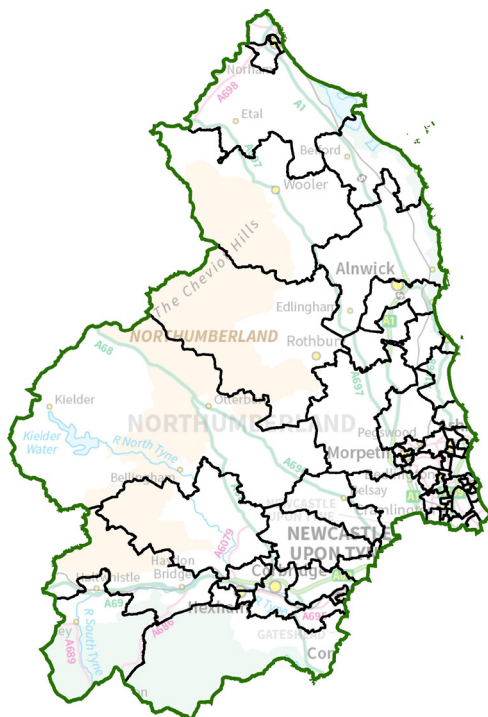


Have your say

Northumberland Electoral Review



The Local Government Boundary Commission for England is asking for your views on proposed new electoral arrangements for Northumberland.

We want to know:

- Do the proposed divisions reflect local communities?
- How do you think the proposals can be improved?
- Are the names of the proposed divisions right?

Consultation closes: 10 July 2023



reviews@lgbce.org.uk



www.lgbce.org.uk



Review Officer (Northumberland), LGBCE,
PO Box 133, Blyth, NE24 9FE

