

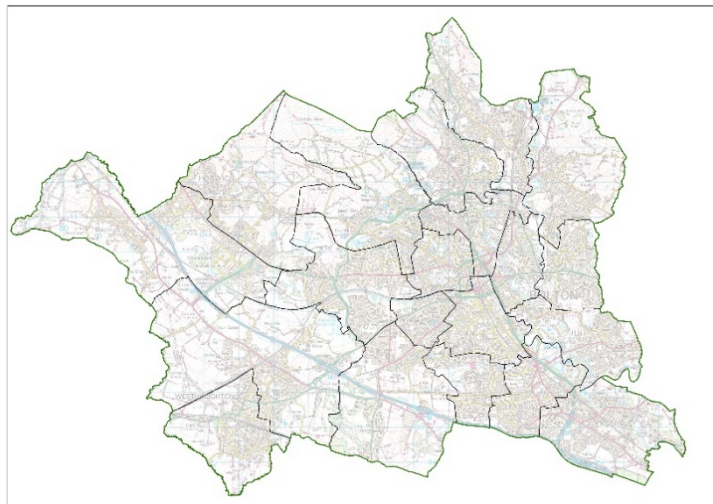
News Release from the Local Government Boundary Commission for England

Embargoed until: 00:01 05 January 2021

Have your say on a new political map for Bolton Metropolitan Borough Council

A new pattern of wards is being developed for Bolton Metropolitan Borough Council.

The Local Government Boundary Commission has decided that the number of councillors in Bolton should be 60, the same as now. The Local Government Boundary Commission wants to hear what residents and organisations think about their local area. A 10-week consultation on the proposals will run until 15 March 2021.



Current wards in Bolton

Credit: contains Ordnance Survey data (c) Crown copyright and database rights 2020

High resolution map available at [http://s3-eu-west-2.amazonaws.com/lgbce/Reviews/North%20West/Greater%20Manchester/Bolton/Bolton_wardmap_labels%20\(1\).jpg](http://s3-eu-west-2.amazonaws.com/lgbce/Reviews/North%20West/Greater%20Manchester/Bolton/Bolton_wardmap_labels%20(1).jpg)

The Commission is the independent body that draws these boundaries. It is reviewing Bolton to make sure councillors represent about the same number of

Local Government Boundary Commission for England, 1st Floor Windsor House, 50 Victoria Street, London, SW1H 0TL

Tel: 0330 500 1525; Fax: 0330 500 1526; reviews@lgbce.org.uk; www.lgbce.org.uk

electors, and that ward arrangements help the council work effectively. It wants to be sure that its proposals reflect community ties and identities.

The Commission is interested in views on which communities should be part of the same ward. What facilities do people share, such as parks, leisure centres or schools and shopping areas? What issues do neighbouring communities face that they have in common, such as high numbers of visitors or heavy traffic? Have there been new housing or commercial developments that have changed the focus of communities? And are there roads, rivers, railways or other features that people believe form strong boundaries between neighbourhoods?

The Commission will use local views to help it draw up proposals for new ward boundaries. There will be a further round of consultation once the Commission has drawn up those proposals.

Launching the consultation Professor Colin Mellors, Chair of the Commission, said:

“We want people in Bolton to help us.

“We are starting to draw up new wards for Bolton. We want our proposals for new electoral arrangements to reflect communities. We also want them to be easy to understand and convenient for local people.

“Residents and local organisations can help us understand community ties and identities at this early stage of the process.

“It’s easy to get involved. Go to our website. Or you can e-mail or write to us.

“Just tell us what you think and give us some details why you think that. It’s really simple, so do get involved.”

The Commission has a dedicated section on its website where people can give their views: <https://consultation.lgbce.org.uk/node/24340>

People can also give their views by e-mail at reviews@lgbce.org.uk, and by post:

Review Officer (Bolton)
LGBCE
PO Box 133
Blyth
NE24 9FE

Ends/

Local Government Boundary Commission for England, 1st Floor Windsor House, 50 Victoria Street, London, SW1H 0TL

Tel: 0330 500 1525; Fax: 0330 500 1526; reviews@lgbce.org.uk; www.lgbce.org.uk

Notes to editors:

For further information contact the Commission's press office on 0330 500 1525 / 1250 or email press@lgbce.org.uk

An interactive map is available at <https://consultation.lgbce.org.uk/>

The Local Government Boundary Commission for England is an independent body accountable to Parliament. It recommends fair electoral and boundary arrangements for local authorities in England. In doing so, it aims to

- Make sure that, within an authority, each councillor represents a similar number of electors
- Create boundaries that are appropriate, and reflect community ties and identities
- Deliver reviews informed by local needs, views and circumstances