

Binfield Parish Council Response to Bracknell Forest Local Government Boundary Review

Binfield Parish Council would like to make an evidence-based proposal for the whole of Binfield parish to be made into a 3-councillor ward called Binfield. This proposal meets the 3 criteria as laid out by LGBCE for:

1. Electoral equality for voters
2. Community identities and interests
3. Effective and convenient local government

Evidence to support Binfield ward

1. Electoral equality for voters

A Binfield ward meets the electoral equality for voters as per the table below. The electoral numbers are copied from the LGBCE published spreadsheet for Bracknell Forest. What can be seen is that the parish as a whole ward is within the +/- tolerance of 10% at +6% based on 2025 electorate. Should it be decided to reduce the total number of councillors, to say 39, then the parish is still within tolerance at +3%.

Polling Station	Area	Parish	Parish ward	Existing ward	Proposed new ward	Electors 2019	Electors 2025
BA	Memorial	Binfield Parish	Binfield	Binfield with Warfield	Binfield	2,744	3115
BAC	Farley Wood	Binfield Parish	Binfield	Binfield with Warfield	Binfield	132	620
BB	Farley Wood	Binfield Parish	Binfield	Binfield with Warfield	Binfield	1,536	1647
BC	Wykery	Binfield Parish	Binfield	Binfield with Warfield	Binfield	363	629
BI	Newbold	Binfield Parish	Binfield	Binfield with Warfield	Binfield	1983	2056
Total						6,758	8,067
Bracknell Forest Total Electors							101484
Electorate per councillor (Total electorate in 2026 divided by 40)							2537
Binfield councillors							3
electors per councillor							2689
variance per councillor							+152
ward variance							+456
ward variance %							+6%

2. Communities identities and interests

Binfield is the only parish in Bracknell Forest to have a made Neighbourhood Plan which was passed at referendum in 2016. The plan encompasses the whole of the parish. During the consultation process the steering group noted that residents from all areas of the parish want to have an identity with Binfield and valued being part of the village rather than an extension of Bracknell. A copy of the Binfield Neighbourhood Plan is appended, but extracts are copied below:

2.5 The centre of the parish has good facilities with a retail centre and five pubs, the library, primary school, scout hut, Memorial Hall and GP surgery. The residents of the developments to the south of the parish in Temple Park, Farley Wood, Amen Corner and Jennetts Park adjoin Bracknell and are separated from the centre of the village by the busy London Road, and in the case of Jennetts Park, the A329M. Although physically dislocated from the village centre because for most people it requires a car journey to use the facilities in the village, these residents have said they would like to have more facilities in walking distance and maintain a strong identity with Binfield parish rather than Bracknell Town.

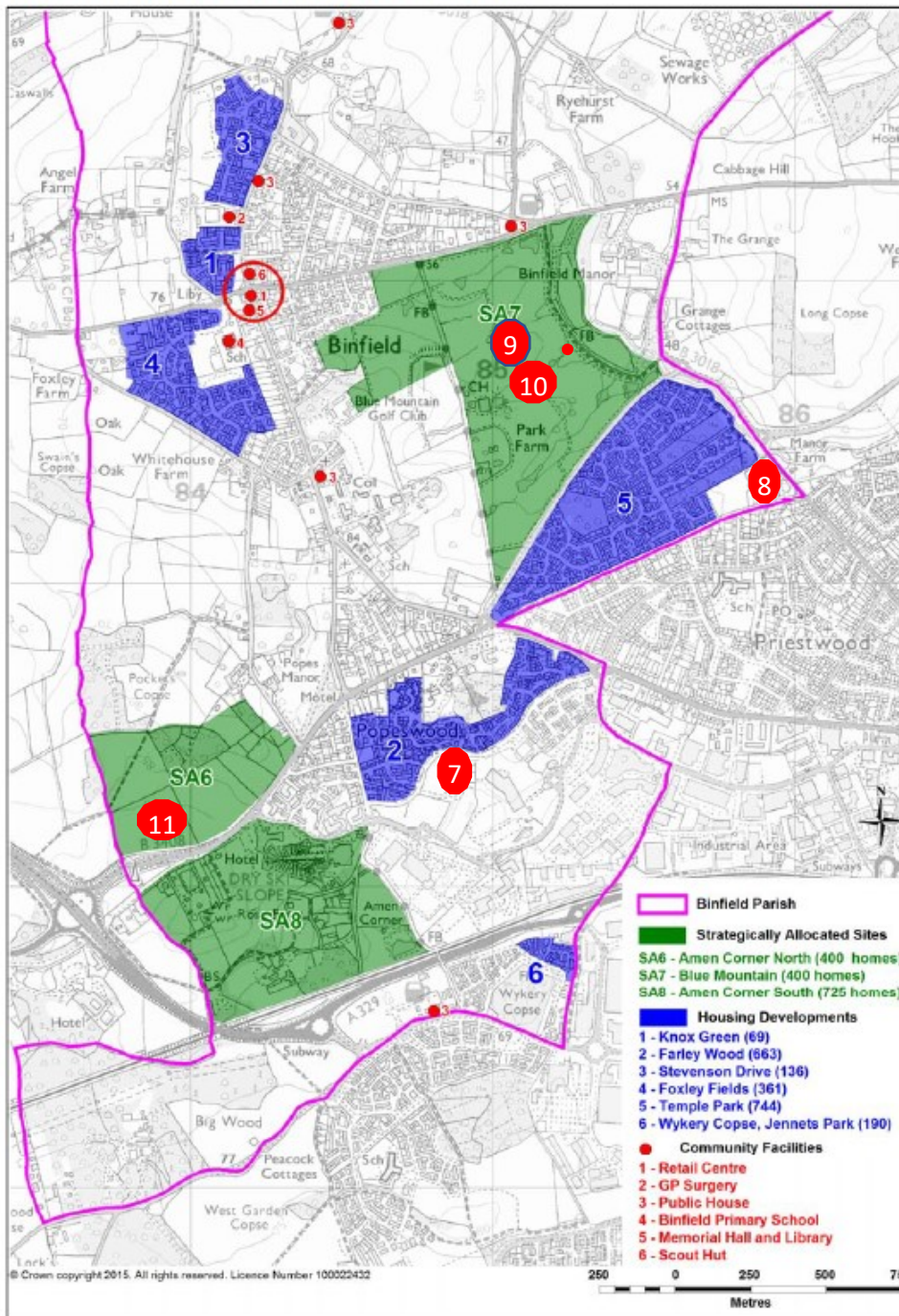
Binfield has many community clubs and facilities that are widely used by residents from all areas of the parish. Volunteers from the parish provide Brownies, Cubs and Scouts, Binfield Football Club, Binfield Cricket Club, various tennis clubs, Gardening Club, U3A, Environment Group, and many more. There are community centres in the village centre; Farley Wood; and proposed new facilities at Blue Mountain to support all the new development in the parish. The Parish Council is considering proposals to use CIL income to provide appropriate facilities to meet the needs of new residents in the strategic development areas.

A second focal point for the parish to maintain the village identity for residents is created by the new Kings Academy school at Blue Mountain for ages 2 to 18 years, and together with the adjacent proposed new GP surgery and community facility will provide facilities in walking distance for the more southern neighbourhoods. The GP surgery has been agreed by the CCG, NHS England and Bracknell Forest Council and planning permission is being sought. Together with a community facility. A second Kings Academy Oakwood primary school serves the new development at Amen Corner, and the parish council are adopting the new allotments adjoining the school site.

The Parish Council has undertaken a resident's survey to ask residents about their priorities and what additional facilities are needed. The parish council is currently considering these responses to create a comprehensive strategy and 5-year plan. The CIL income received from new development will be used to meet the needs and desire to maintain the identity of the whole parish as a village.

The map below is adapted from the neighbourhood plan and identifies the key parish facilities and development areas.

Figure 2.2: Development Areas and Key Facilities



7 – Farley Wood Community centre 8 – Jocks Lane Recreation 9 – Kings Academy School 2-18yrs 10 – Planned GP surgery and community centre
11 - Kings Academy Oakwood primary school

3. Effective and convenient local government

The Parish Council is a very active 1st tier of government working for all residents within the parish boundary. This is evidenced by the Neighbourhood Plan and strategic approach to using CIL income and running the council. Given that the parish has and will receive considerable CIL income from proposed development it would be effective and convenient for the unitary ward to be co-terminus. The parish has already received CIL for Wykery Copse and Blue Mountain as strategic site allocations.

Conclusion

Binfield as a 3-councillor ward meets and exceeds all the LGBCE criteria. Maintaining the parish boundary as a new unitary ward would be beneficial to the parish with minimal disruption. It is electorally fair, maintains a unified community identity and supports effective and convenient local government.