

Map referred to in the East Hertfordshire (Electoral Changes) Order 2023  
Sheet 1 of 1

Boundary alignment and names shown on the mapping background may not be up to date. They may differ from the latest boundary information applied as part of this review.

This map is based upon Ordnance Survey material with the permission of Ordnance Survey on behalf of the Keeper of Public Records © Crown copyright and database right. Unauthorised reproduction infringes Crown copyright and database right. The Local Government Boundary Commission for England GD10004926 2022.

KEY TO PARISH WARDS

BISHOP'S STORTFORD CP

- A BISHOP'S STORTFORD ALL SAINTS
- B BISHOP'S STORTFORD CENTRAL
- C BISHOP'S STORTFORD CHANTRY
- D BISHOP'S STORTFORD PARSONAGE
- E BISHOP'S STORTFORD SILVERLEYS
- F BISHOP'S STORTFORD SOUTH
- G BISHOP'S STORTFORD THORLEY MANOR NORTH
- H BISHOP'S STORTFORD THORLEY MANOR SOUTH
- I BISHOP'S STORTFORD WATERSIDE

HERTFORD CP

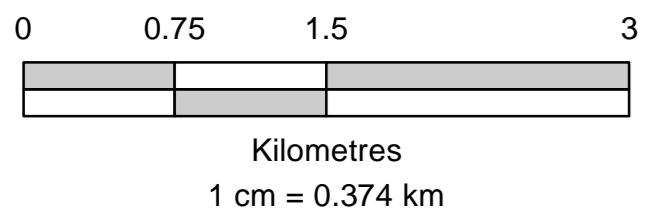
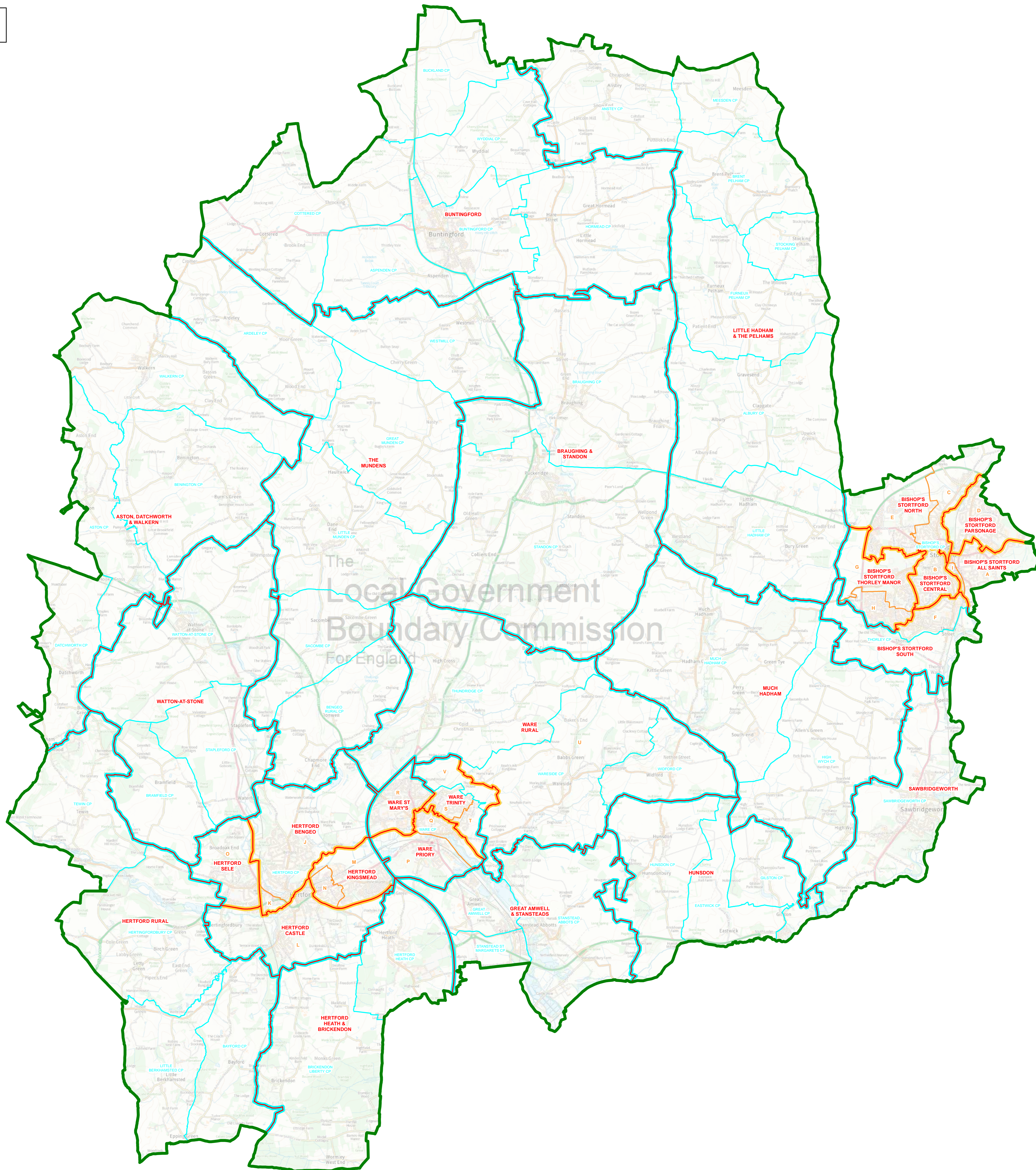
- J HERTFORD BENGEO NORTH
- K HERTFORD BENGEO SOUTH
- L HERTFORD CASTLE
- M HERTFORD KINGSMEAD EAST
- N HERTFORD KINGSMEAD WEST
- O HERTFORD SELE

WARE CP

- P WARE CHADWELL
- Q WARE CHRISTCHURCH
- R WARE ST MARY'S
- S WARE TRINITY
- T WARE WIDBURY

WARESIDE CP

- U RURAL
- V URBAN



KEY	
	DISTRICT COUNCIL BOUNDARY
	PARISH BOUNDARY
	PARISH WARD BOUNDARY
	WARD BOUNDARY COINCIDENT WITH PARISH BOUNDARY
	WARD BOUNDARY COINCIDENT WITH PARISH WARD BOUNDARY
	HUNSDON WARD NAME
	EASTWICK CP PARISH NAME