

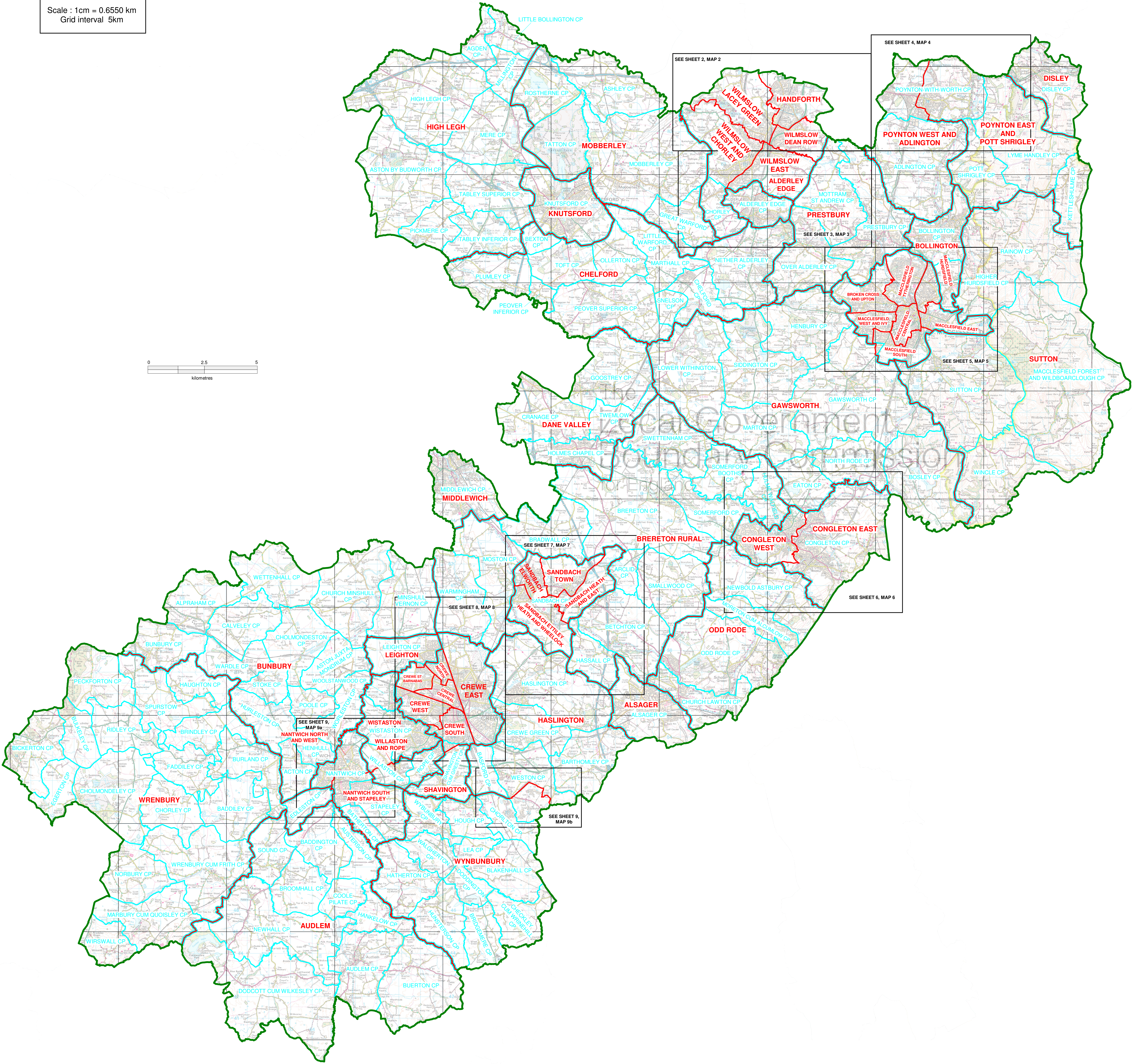
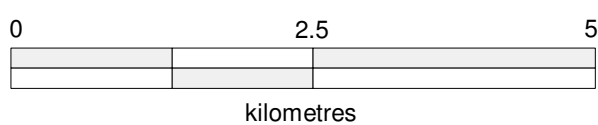
THE LOCAL GOVERNMENT BOUNDARY COMMISSION FOR ENGLAND

ELECTORAL REVIEW OF CHESHIRE EAST

Final Recommendations for Ward Boundaries in the Unitary Authority of Cheshire East July 2010
Sheet 1 of 9

This map is based upon Ordnance Survey material with the permission of Ordnance Survey on behalf of the Controller of Her Majesty's Stationery Office © Crown copyright.
Unauthorised reproduction infringes Crown copyright and may lead to prosecution or civil proceedings.
The Local Government Boundary Commission for England GD10049926 2010.

Scale : 1cm = 0.6550 km
Grid interval 5km



KEY	
	UNITARY AUTHORITY BOUNDARY
	PROPOSED ELECTORAL DIVISION BOUNDARY
	PARISH BOUNDARY
	PARISH BOUNDARY COINCIDENT WITH ELECTORAL DIVISION BOUNDARY
	BRERETON
	CONGLETON CP
	PROPOSED ELECTORAL DIVISION NAME