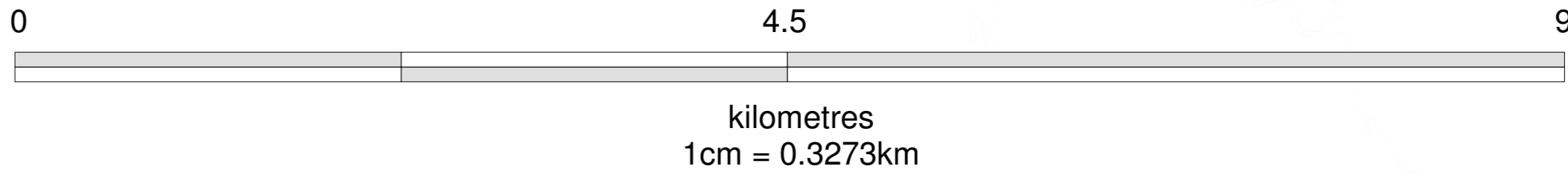
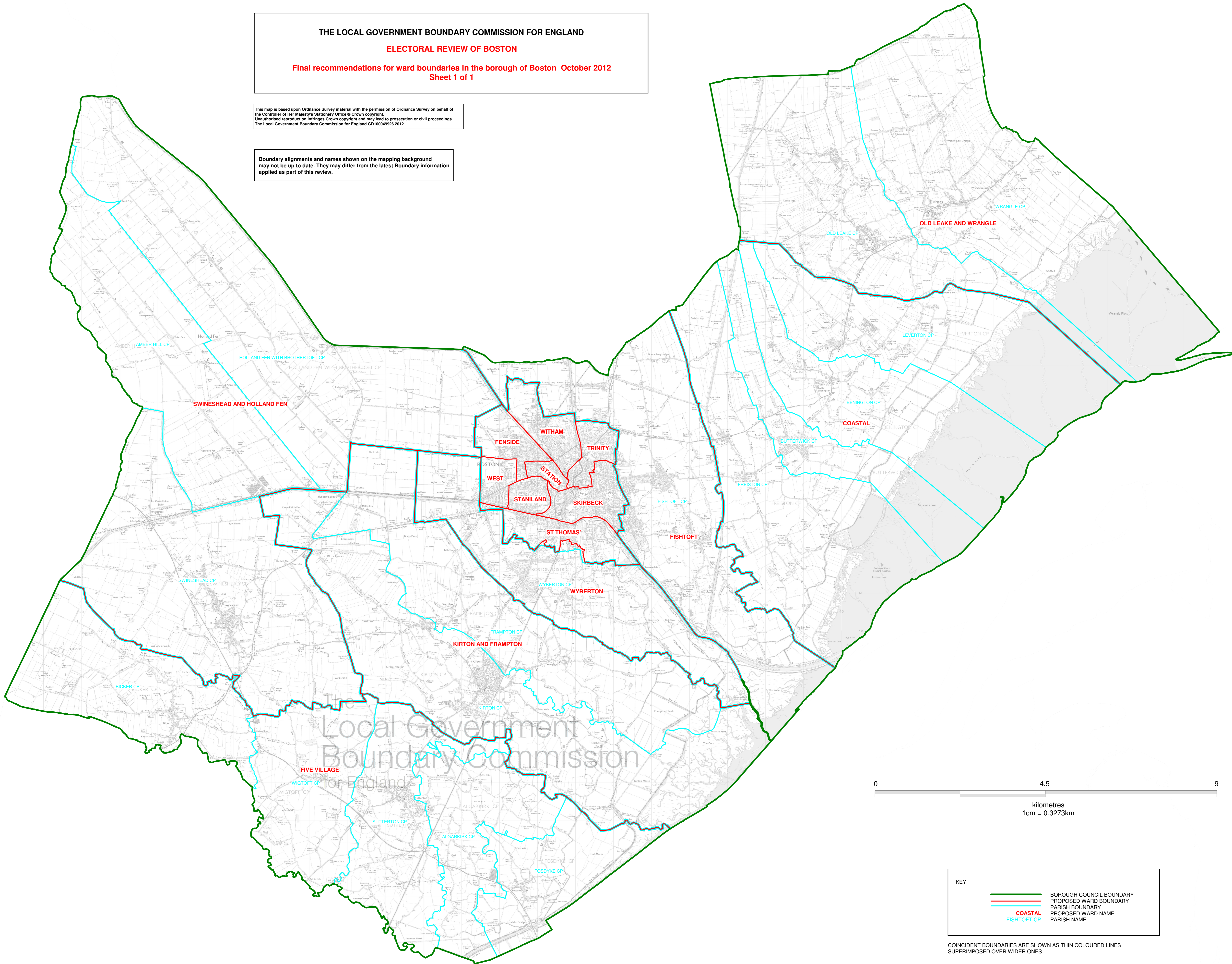


THE LOCAL GOVERNMENT BOUNDARY COMMISSION FOR ENGLAND
ELECTORAL REVIEW OF BOSTON
 Final recommendations for ward boundaries in the borough of Boston October 2012
 Sheet 1 of 1

This map is based upon Ordnance Survey material with the permission of Ordnance Survey on behalf of the Controller of Her Majesty's Stationery Office © Crown copyright. Unauthorised reproduction infringes Crown copyright and may lead to prosecution or civil proceedings. The Local Government Boundary Commission for England GD100049926 2012.

Boundary alignments and names shown on the mapping background may not be up to date. They may differ from the latest Boundary information applied as part of this review.



KEY	
	BOROUGH COUNCIL BOUNDARY
	PROPOSED WARD BOUNDARY
	PARISH BOUNDARY
	PROPOSED WARD NAME
	PARISH NAME

COINCIDENT BOUNDARIES ARE SHOWN AS THIN COLOURED LINES SUPERIMPOSED OVER WIDER ONES.