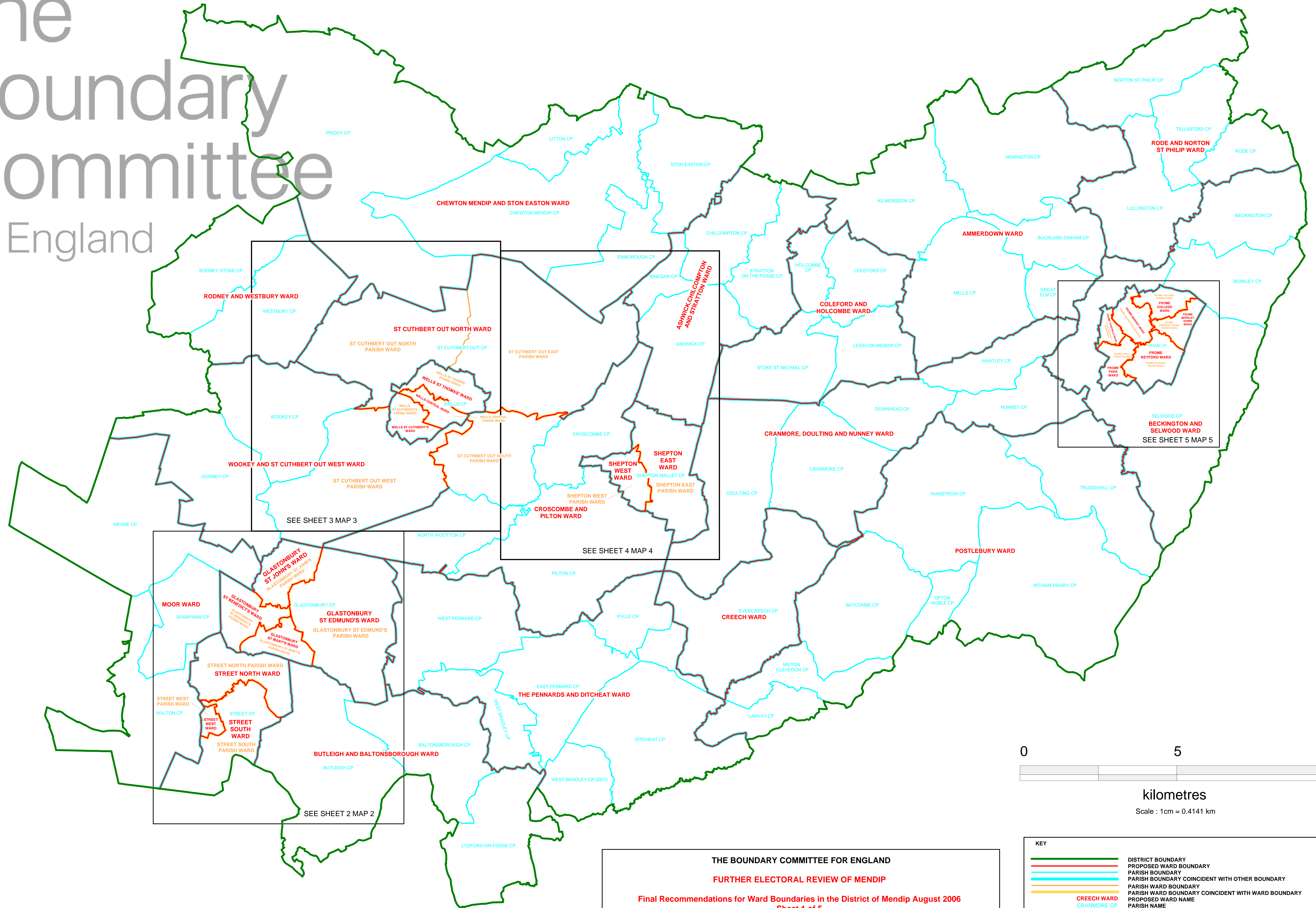


The Boundary Committee for England

for England



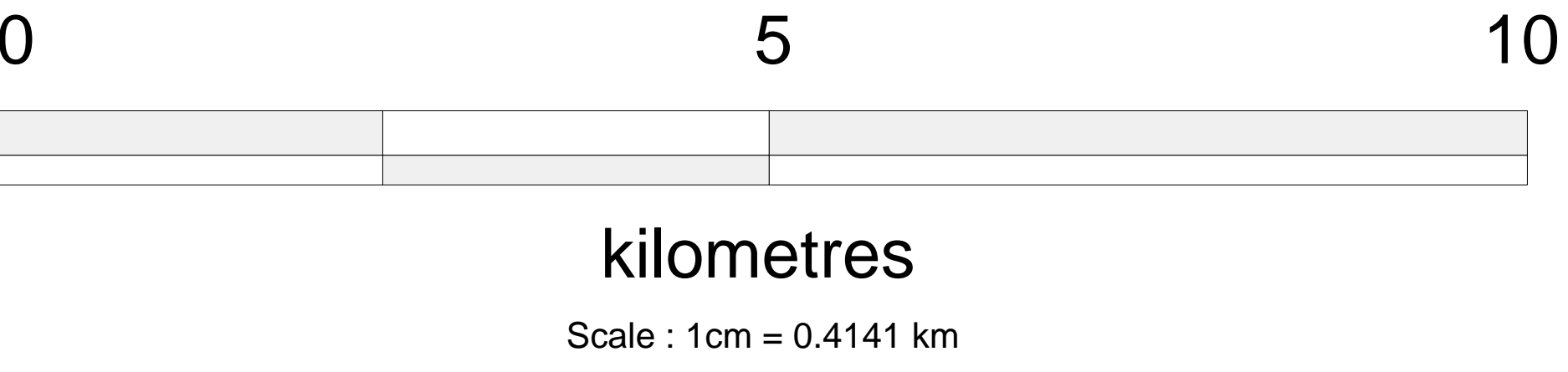
SEE SHEET 3 MAP 3

SEE SHEET 4 MAP 4

SEE SHEET 2 MAP 2

SEE SHEET 5 MAP 5

THE BOUNDARY COMMITTEE FOR ENGLAND
 FURTHER ELECTORAL REVIEW OF MENDIP
 Final Recommendations for Ward Boundaries in the District of Mendip August 2006
 Sheet 1 of 5



KEY	
	DISTRICT BOUNDARY
	PROPOSED WARD BOUNDARY
	PARISH BOUNDARY
	PARISH BOUNDARY COINCIDENT WITH OTHER BOUNDARY
	PARISH WARD BOUNDARY
	PARISH WARD BOUNDARY COINCIDENT WITH WARD BOUNDARY
	CREECH WARD
	CRANMORE CP
	SHEPTON WEST PARISH WARD
	PROPOSED WARD NAME
	PARISH NAME
	PARISH WARD NAME

This map is reproduced from the OS map by The Electoral Commission with the permission of the Controller of Her Majesty's Stationery Office, © Crown Copyright. Unauthorised reproduction infringes Crown Copyright and may lead to prosecution or civil proceedings. Licence Number: GD031140